

CERTIFICATE OF LOCATION OF GOVERNMENT CORNER

Northeast Corner of Section 26, Township 143N, Range 26W, 5th P.M.

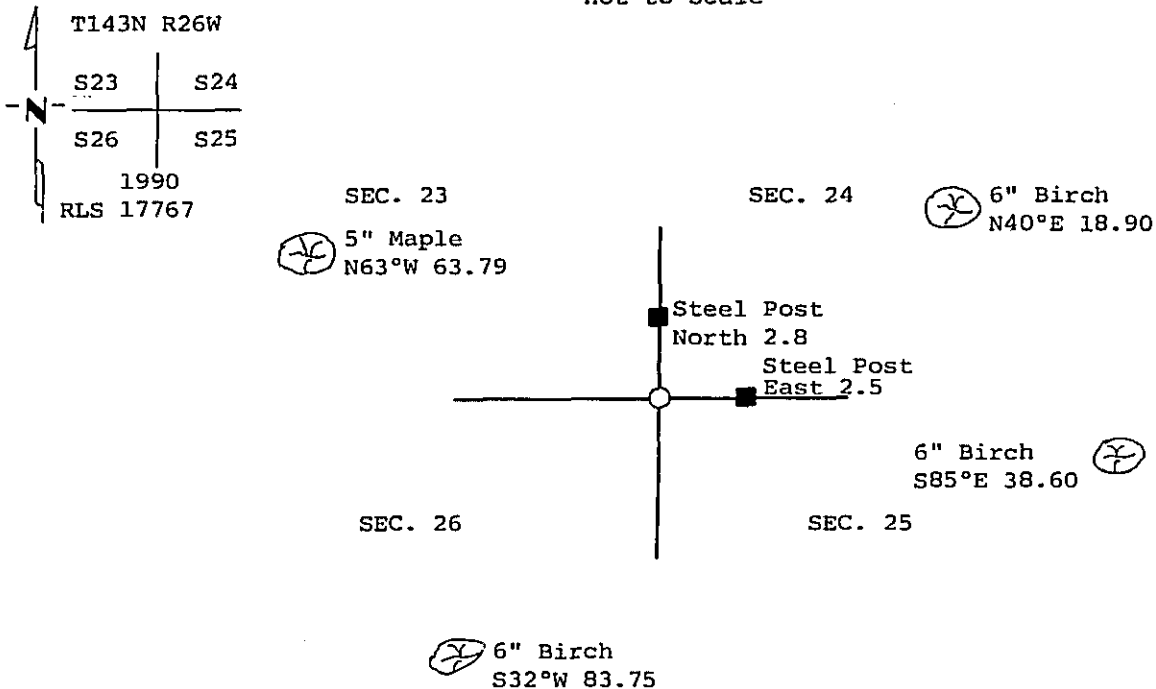
STATE OF MINNESOTA, County of Cass

At the corner location shown on the sketch:

- On _____ found a _____
- left monument as found, lowered monument, removed monument (explain)
- On 4-9-90 placed a 2" X 48" brass capped monument

Monument Marked

SKETCH OF REFERENCE TIES
not to scale



bearings are true All trees are scribed, painted with a 30d spike in side and USFS 54-3 tag.

Statement of evidence relative to this corner location is on back of page. 323166

I hereby certify that this survey, plan or report was prepared by me or under my direct supervision and that I am a duly Registered Land Surveyor under the laws of the State of Minnesota.

William C. Dwyer

Date 8/22/90 Registration No. 17767

OFFICE OF THE COUNTY RECORDER

County of Cass

I hereby certify that this document was filed in the Co. Recorders office at 3:25 P. .M. on the 22 day of August A.D., 19 90

County Recorder Claudia Kayler
By M.J., Deputy

DOCUMENT NO. 323166

Statement of Evidence:

R21 Northeast corner section 26

Cor. 23,24,25 and 26 (NE Cor. Sec. 26)

- 1872 U.S. General Land Office survey set wood post for corner and the following references were noted:
Elm 6" N 31 degrees E, 12 Links (7.92 feet)
Spruce 6" S 8 degrees W, 40 Links (26.40 feet)
Fir 8" N 53 degrees W, 50 Links (33.00 feet)
Fir 5" S 60 degrees E, 30 Links (19.80 feet)
- 1968 Curt Krause, USFS, chained to searched area from section corner to north, area has been recently cut off, no evidence of corner, or BT's found.
- 11-8-1989 Personnel from Kovanen & Osufsen Inc. traverse to area, area has been disturbed by road construction, no evidence of corner, or BT's found.
- 4-9-1990 Personnel from Kovanen & Osufsen Inc. made an additional search of area, nothing found, set a 2" x 48" brass capped monument in lost position by double proportion method using found Northeast corner of Section 25, found North Quarter corner of Section 27, found Northeast corner of Section 35 and the reestablished Northeast corner of Section 23, mark the following witnesses:
Birch 6" S 32 degrees W, 83.75 feet
Maple 5" N 63 degrees W, 63.79 feet
Birch 6" N 40 degrees E, 18.90 feet
Birch 6" S 85 degrees E, 38.60 feet
Set 8' long steel sign post with sign attached, East 2.5 feet
Set 8' long steel sign post with sign attached, North 2.8 feet

This position is not traceable to the original GLO corner, but accepted as corner for lack of further evidence.