

CERTIFICATE OF LOCATION OF GOVERNMENT CORNER

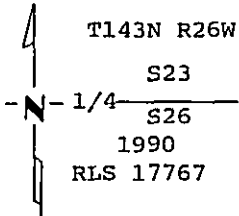
North Quarter Corner of Section 26, Township 143N, Range 26W, 5th P.M.

STATE OF MINNESOTA, County of Cass

At the corner location shown on the sketch:

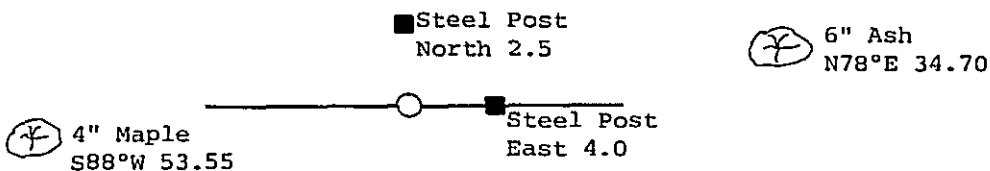
- On _____ found a _____
DATE
- left monument as found, lowered monument, removed monument (explain)
- On 1-10-90 placed a 2" X 54" brass capped monument
DATE

Monument Marked

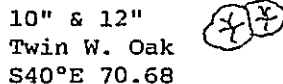


SKETCH OF REFERENCE TIES
not to scale

SEC. 23



SEC. 26



bearings are true All trees are scribed, painted with a 30d spike in side and USFS 54-3 tag.

Statement of evidence relative to this corner location is on back of page. 323165

I hereby certify that this survey, plan or report was prepared by me or under my direct supervision and that I am a duly Registered Land Surveyor under the laws of the State of Minnesota.

William C. Osmer
Date 8/22/90 Registration No. 17767

OFFICE OF THE COUNTY RECORDER

County of Cass

I hereby certify that this document was filed in the Co. Recorders office at 3:24 P.M. on the 28 day of August A.D., 19 90

County Recorder Claudine Kayler
By MJ, Deputy

DOCUMENT NO. 323165

Statement of Evidence:

R19 North quarter corner section 26

1/4 Cor. 23 and 26 (N 1/4 Cor. Sec. 26)

- 1872 U.S. General Land Office survey set wood post for corner and the following references were noted:
Tamarack 5" S 8 degrees W, 5 Links (3.30 feet)
Tamarack 5" N 21 degrees W, 8 Links (5.96 feet)
- 10-22-1969 Curt Krause, USFS, chained to search area from section corner to west, no evidence of corner, or BT's found.
- 11-9-1989 Personnel from Kovanen & Osufsen Inc. traverse to search area from section corner to west, area has been sheared this year, no evidence of corner, or BT's found.
- 4-10-1990 Personnel from Kovanen & Osufsen Inc. made an additional search of area, nothing found, set a 2" x 54" brass capped monument by single proportion measurement on line, between the reestablished Northwest corner of Section 26 and the reestablished Northeast corner of Section 26, then witnessed as follows:
Maple 4" S 88 degrees W, 53.55 feet
Ash 6" N 78 degrees E, 34.70 feet
Twin White Oak 10-12" S 40 degrees E, 70.68 feet
Set 8' long steel sign post with sign attached, East 4.0 feet
Set 8' long steel sign post with sign attached, North 2.5 feet

This position is not traceable to the original GLO corner, but accepted as corner for lack of further evidence.