

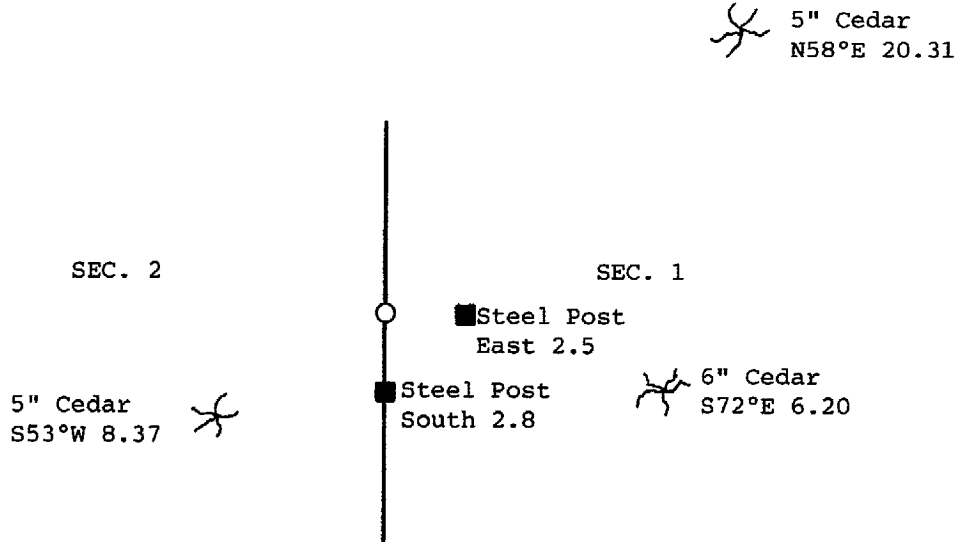
CERTIFICATE OF LOCATION OF GOVERNMENT CORNEREast Quarter _____ Corner of Section 2, Township 143N, Range 26W, 5th P.M.STATE OF MINNESOTA, County of Cass

At the corner location shown on the sketch:

- On _____ found a _____
DATE
- left monument as found, lowered monument, removed monument (explain)
- On 3-21-1990 placed a 2" X 48" brass capped monument
DATE

Monument Marked

T143N R26W
1/4
S2 | S1
1990
RLS 17767

SKETCH OF REFERENCE TIES
not to scale

bearings are true

All trees are scribed, painted with a 30d spike in side and USFS 54-3 tag.

Statement of evidence relative to this corner location is on back of page.

323148

I hereby certify that this survey, plan or report was prepared by me or under my direct supervision and that I am a duly Registered Land Surveyor under the laws of the State of Minnesota.

William C. DwyerDate 8/22/90 Registration No. 17767

OFFICE OF THE COUNTY RECORDER

County of Cass

I hereby certify that this document was filed in the Co. Recorders office at 3:07 P. .M. on the 28 day of August A.D., 1990

County Recorder Cladine KoylerBy (M), DeputyDOCUMENT NO. 323148

Statement of Evidence:

C21 East quarter corner section 2

1/4 Cor. 1 and 2 (E 1/4 Cor. Sec. 2)

- 1872 U.S. General Land Office survey set wood post for corner and the following references were noted:
Tamarack 8" N 60 degrees E, 4 Links (2.64 feet)
Tamarack 6" S 75 degrees W, 6 Links (3.96 feet)
- 11-6-1989 Personnel from Kovanen & Osufsen Inc. search area, no large trees remain in this area.
- 3-21-1990 Personnel from Kovanen & Osufsen Inc. set a 2" x 48" brass capped monument by single proportion measurement and on line, between the Northeast corner of Section 2 and the Southeast corner of Section 2, witnesses are as follow:
Cedar 5" N 58 degrees E, 20.31 feet
Cedar 5" S 53 degrees W, 8.37 feet
Cedar 6" S 72 degrees E, 6.20 feet
Set 8' long steel sign post with sign attached, East 2.5 feet
Set 8' long steel sign post with sign attached, South 2.8 feet

This position is not traceable to the original GLO corner, but accepted as corner for lack of further evidence.