

CERTIFICATE OF LOCATION OF GOVERNMENT CORNER

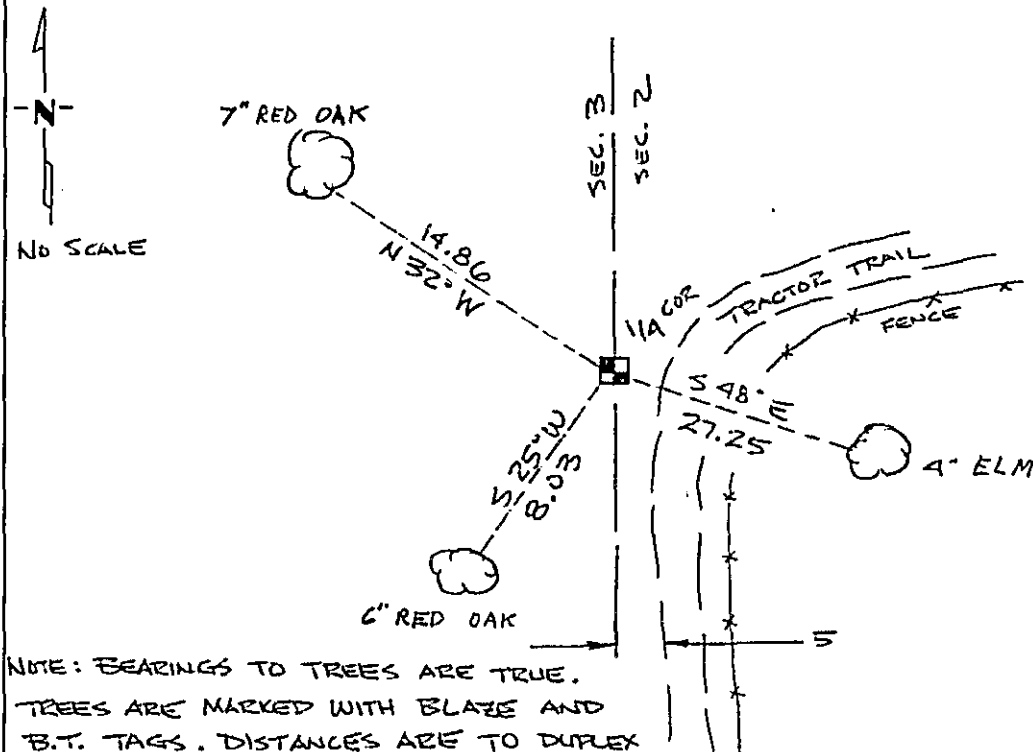
WEST QUARTER Corner of Section 2, Township 133 N, Range 30 W, 5th P.M.

STATE OF MINNESOTA, County of CASS

At the corner location shown on the sketch:

- On _____ found a _____
DATE
- left monument as found, lowered monument, removed monument (explain)
- On MAY 5 1990 placed a 2^{3/4}" ALUMINUM CAP ON 2"x2"x36" SIGN POST
DATE
MATERIAL (STANDARD COUNTY ISSUE) (CAP STAMPED ACCORDINGLY)

SKETCH OF REFERENCE TIES



NOTE: BEARINGS TO TREES ARE TRUE.
 TREES ARE MARKED WITH BLAZE AND
 B.T. TAGS. DISTANCES ARE TO DUPLEX
 NAIL ON SIDE OF TREE. SIGN POST
 SET 1.0 NORTH OF MONUMENT.

Statement of evidence relative to this corner location is on back of page. 320873

I hereby certify that this document and the data contained herein was prepared by me or under my direct supervision.

Jeffrey K. Burt 5/14/1990
SIGNATURE DATE

Registration No. 19095

- Land Surveyor
 County Surveyor

OFFICE OF THE COUNTY RECORDER
 County of Cass

I hereby certify that this document was filed in the Co. Recorders office at 4:16 P. .M. on the 30 day of May A.D., 19 90
 County Recorder Claudine Kayler
 By MJ, Deputy
 DOCUMENT NO. 320873

Statement of Evidence:

C-17

IN 1870 THE ORIGINAL GOV'T SURVEY SET A WOOD POST TO MARK THE CORNER.

JAN. 1990 JEFFREY K. BRETT RLS # 19095 TRAVERSE INTO THE RECORD POSITION TO SEARCH FOR CORNER. FOUND 2" I.P. 200 FEET FROM MY CALC POSITION. THIS IRON PIPE WAS SET 2640 NORTH OF THE SW CORNER OF SECTION 2 WITH NO REGARD FOR THE NW CORNER OF SECTION 2.

MAY 5, 1990 JEFFREY K. BRETT RLS # 19095 DETERMINES CORNER IS LOST. STANDARD COUNTY MONUMENT IS SET BY SINGLE PROPORTIONATE MEASURE BETWEEN THE NW CORNER OF SECTION 2 AND THE SW CORNER OF SECTION 2.