

CERTIFICATE OF LOCATION OF GOVERNMENT CORNER

East Quarter _____ Corner of Section 2, Township 134N., Range 31W., 5th P.M.

STATE OF MINNESOTA, County of Cass

At the corner location shown on the sketch:

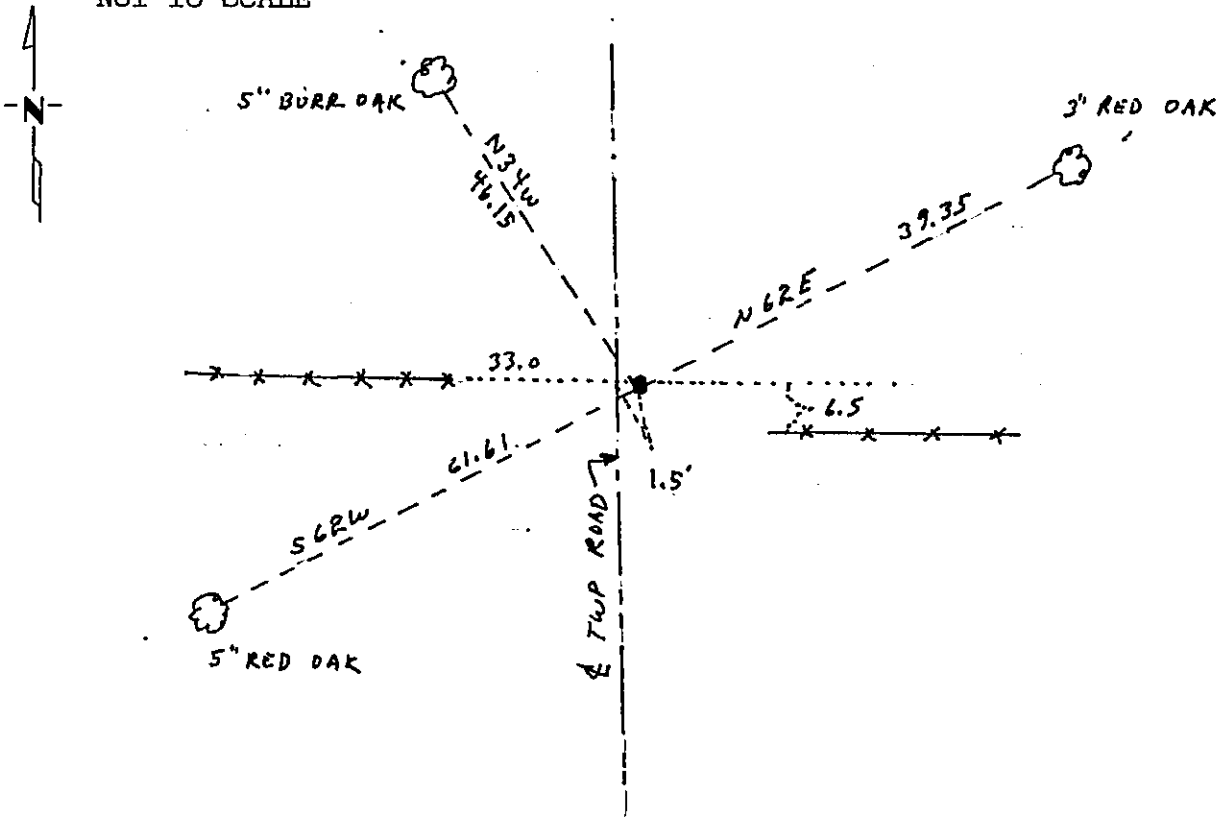
On _____ found a _____
DATE _____

left monument as found, lowered monument, removed monument (explain)

On 10/22/86 placed a 2" x 18" with aluminum cap down 10" in line w/old fence W, 33' E of CFP W, 1 1/2' E of N-S centerline, 6 1/2' N of fence E.

SKETCH OF REFERENCE TIES

NOT TO SCALE



Statement of evidence relative to this corner location is on back of page.

I hereby certify that this document and the data contained herein was prepared by me or under my direct supervision.

Walter E. Cass
SIGNATURE

4-18-90
DATE

Registration No. 11395

- Land Surveyor
- County Surveyor

319826

OFFICE OF THE COUNTY RECORDER
County of Cass

I hereby certify that this document was filed in the Co. Recorders office at 11:00 A .M. on the 23rd day of April A.D., 19 90.

County Recorder Claudine Kaylor
By Byk, Deputy

DOCUMENT NO. 319826

Statement of Evidence:

C-21

East Quarter Corner, Section 2, T.134N., R31W., 5th P.M.

- 1869 U.S. General Land Office survey set a wood post for this corner and marked the following bearing trees: a 4" Aspen N85W 16 links and a 16" Aspen S88E 14 links.
- 1915 County Survey Record Book "B", pages 484-495, show a survey by N.D. Gorman. He set an iron monument proportionally.
- 1986 On May 14, Cass County Survey Technician Terry Freeman and backhoe operator Glen Williams dug an area 6' east to west by 12' north to south by 3' deep. They found 6" of natural black dirt with a layer of big rocks, 2' of fill, and 6" of top. They hit a cable.
- 1986 On October 22, Terry Freeman set a 2"x18" telespar with an aluminum cap down 10" in line with an old fence to the west, 33' east of corner fence post west, 1½' east of the centerline of the north to south road, and 6½' north of fence to the east. The following new bearing trees were marked: a 5" Burr Oak N34W 46.15', a 3" Red Oak N62E 39.35', and a 5" Red Oak S62W 61.61'.