

# CERTIFICATE OF LOCATION OF GOVERNMENT CORNER

North Quarter Corner of Section 34, Township 134N., Range 31W., 5th P.M.

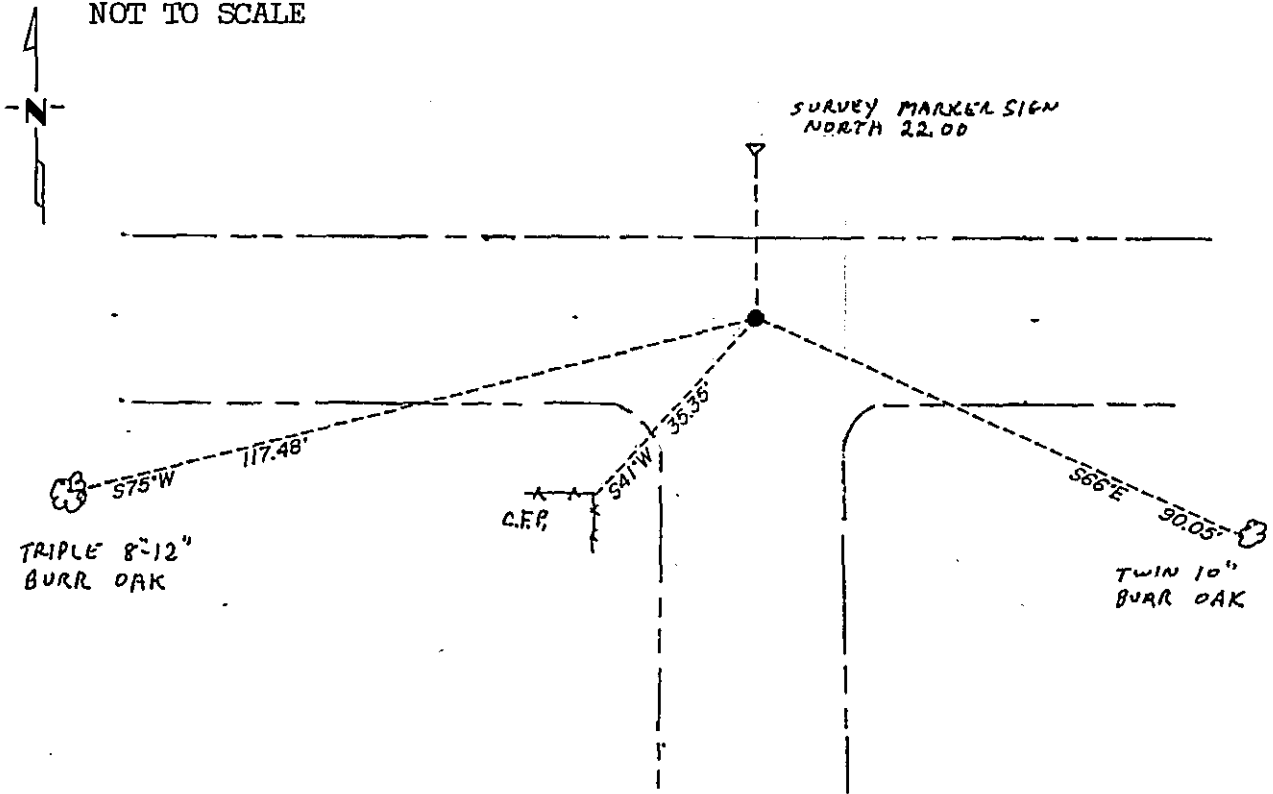
STATE OF MINNESOTA, County of Cass

At the corner location shown on the sketch:

- On \_\_\_\_\_ found a \_\_\_\_\_  
DATE
- left monument as found,  lowered monument,  removed monument (explain)
- On 9/18/86 placed a cast iron monument down 8" in the centerline  
of east <sup>DATE</sup> to west road in line with the road going south.

### SKETCH OF REFERENCE TIES

NOT TO SCALE



Statement of evidence relative to this corner location is on back of page.

I hereby certify that this document and the data contained herein was prepared by me or under my direct supervision.

Walter E. Cass  
SIGNATURE

4-18-90  
DATE

Registration No. 11395

- Land Surveyor
- County Surveyor

319820  
OFFICE OF THE COUNTY RECORDER  
County of Cass

I hereby certify that this document was filed in the Co. Recorders office at 10:30 A .M. on the 23rd day of April A.D., 19  

County Recorder Claudine Kaylor  
By hjk, Deputy

DOCUMENT NO. 319820

Statement of Evidence:

V-15

North Quarter Corner, Section 34, T.134N., R.31W., 5th P.M.

- 1869 U.S. General Land Office Survey set a wood post for this corner and marked the following bearing trees: a 3" Aspen S15E 55 links and a 6" Oak S53E 120 links.
- 1986 On May 19, Terry Freeman of the Cass County Surveyors Office and backhoe operator Glen Williams dug in the area of the east to west road and the road going south. They dug an area 10' north to south by 12' east to west by 2½' deep. They found 1' of top and fill and dug 1½' into gravel-clay natural soil. There were numerous small rocks in the area.
- 1986 On September 18, Terry Freeman and Norman Morris set a cast iron monument in the centerline of the east to west road and in line with the centerline of the road going south.