

CERTIFICATE OF LOCATION OF GOVERNMENT CORNER

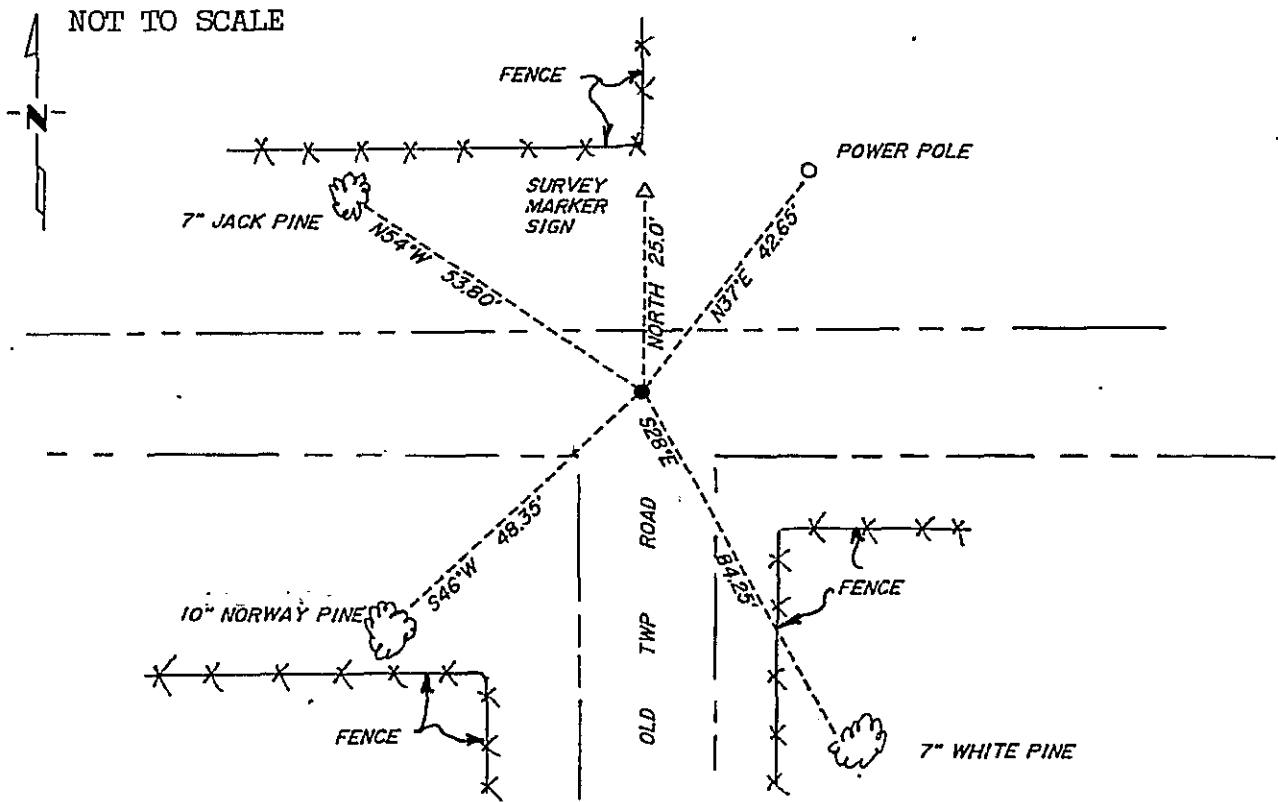
North Quarter Corner of Section 36, Township 134N, Range 31W., 5th P.M.

STATE OF MINNESOTA, County of Cass

At the corner location shown on the sketch:

- On _____ found a _____
DATE
- left monument as found, lowered monument, removed monument (explain)
- On 9/18/86 placed a cast iron monument down 10" in centerline
DATE east to west road in line with old road south and fence north

SKETCH OF REFERENCE TIES



Statement of evidence relative to this corner location is on back of page. 319106

I hereby certify that this document and the data contained herein was prepared by me or under my direct supervision.

Walter E. Larson 3-15-90
SIGNATURE DATE

Registration No. 11395

- Land Surveyor
- County Surveyor

OFFICE OF THE COUNTY RECORDER
County of Cass

I hereby certify that this document was filed in the Co. Recorders office at 4:17 P.M. on the 19 day of March A.D., 19 90

County Recorder Claudine Kayler
By MS, Deputy

DOCUMENT NO. 319106

North Quarter Corner, Section 36, T.134N., R.31W., 5th-P.M..

- 1869 U.S. General Land Office survey set a wood post for this corner and marked the following bearing trees: 10" Oak S10E 20 links, 4" Oak N8E 18 links.
- 1986 On May 16, Cass County Survey Technician Terry Freeman and backhoe operator Glen Williams dug in area of the east to west road and the old township road south. Dug 9' north to south by 12' east to west by 2.5' deep. There was a 6" top and they dug 24" into natural sand.
- 1986 On September 18, Terry Freeman placed a cast iron monument down 10" in the centerline of the east to west road in line with the old township road going south and the fence to the north.