

CERTIFICATE OF LOCATION OF GOVERNMENT CORNER

Northeast Corner of Section 31, Township 134N., Range 31W., 5th P.M.

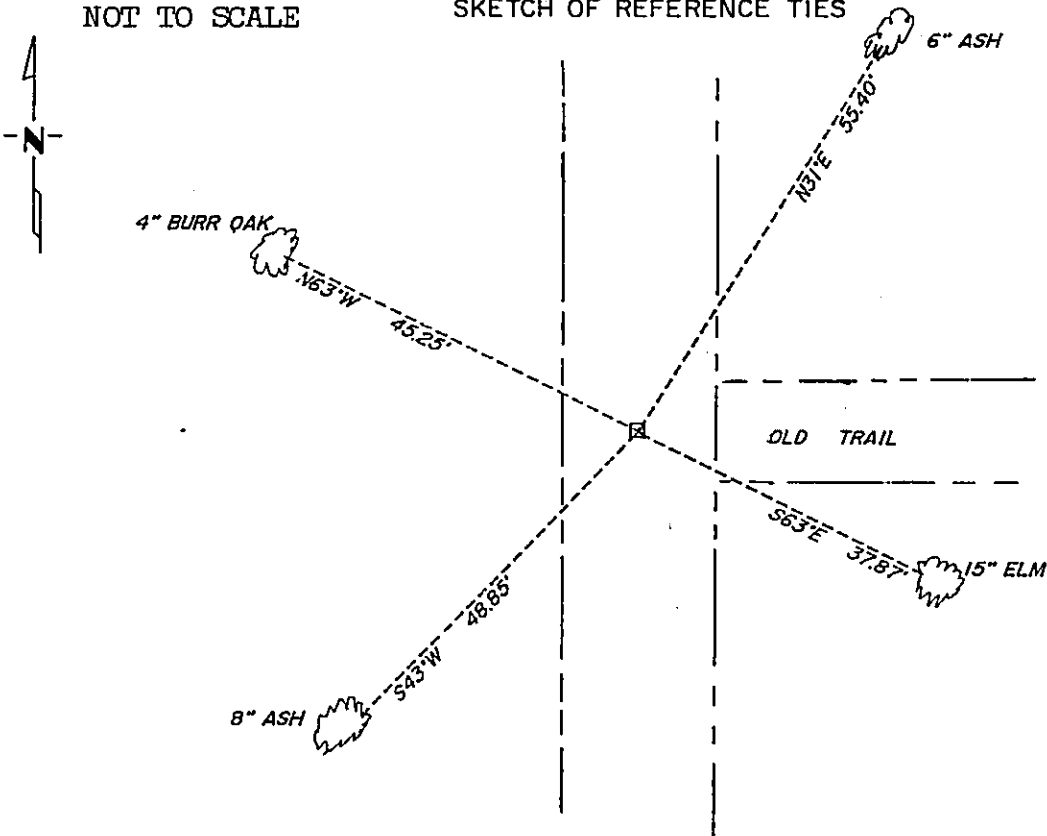
STATE OF MINNESOTA, County of Cass

At the corner location shown on the sketch:

- On 11/7/85 found a 8" square stone down 0.2'
DATE
- left monument as found, lowered monument, removed monument (explain)
- On 10/8/86 placed a 2" x 2' pipe on the north side of the stone
DATE and a 1/2" x 2' rod on the south side.

NOT TO SCALE

SKETCH OF REFERENCE TIES



Statement of evidence relative to this corner location is on back of page.

319103

I hereby certify that this document and the data contained herein was prepared by me or under my direct supervision.

Walter E. Cass
SIGNATURE

3-15-90
DATE

Registration No. 11395

- Land Surveyor
- County Surveyor

OFFICE OF THE COUNTY RECORDER

County of Cass

I hereby certify that this document was filed in the Co. Recorders office at 4:10 P. on the 19 day of March A.D., 19 90

County Recorder Claudine Kayler

By MS, Deputy

DOCUMENT NO. 319103

Statement of Evidence:

V-5

Northeast Corner, Section 31, T.134N., R. 31W., 5th P.M.

- 1869 U.S. General Land Office survey set a wood post for this corner and marked the following bearing trees: a 16" Balsam S30E 5 links, a 14" Elm S84W 22 links, a 12" Elm N41E 24 links, and a 22" Aspen N32W 18 links.
- 1907 County Survey Record Book "A", pages 40-41, show a survey by John Curo. He found the northeast and the southwest bearing trees. He set an 8"x 8"x 36" stone.
- 1915 County Survey Record Book "B", pages 484-495, show a survey by N.D. Gorman. He started at the corner and ran east.
- 1985 On November 7, Cass County Survey Technician Terry Freeman and backhoe operator Glen Williams found an 8" square stone down 0.2'. The following bearing trees were established: a 15" Elm S63E 37.87' and a 4" Ash N81E 20.55'.
- 1986 On October 8, Terry Freeman placed a 2"x 2' pipe on the north side and a 1/2"x 2' rod on the south side of the stone that was found.