

# CERTIFICATE OF LOCATION OF GOVERNMENT CORNER

North Quarter Corner of Section 24, Township 134N, Range 31W, 5th P.M.

STATE OF MINNESOTA, County of Cass

At the corner location shown on the sketch:

On \_\_\_\_\_ found a \_\_\_\_\_  
DATE

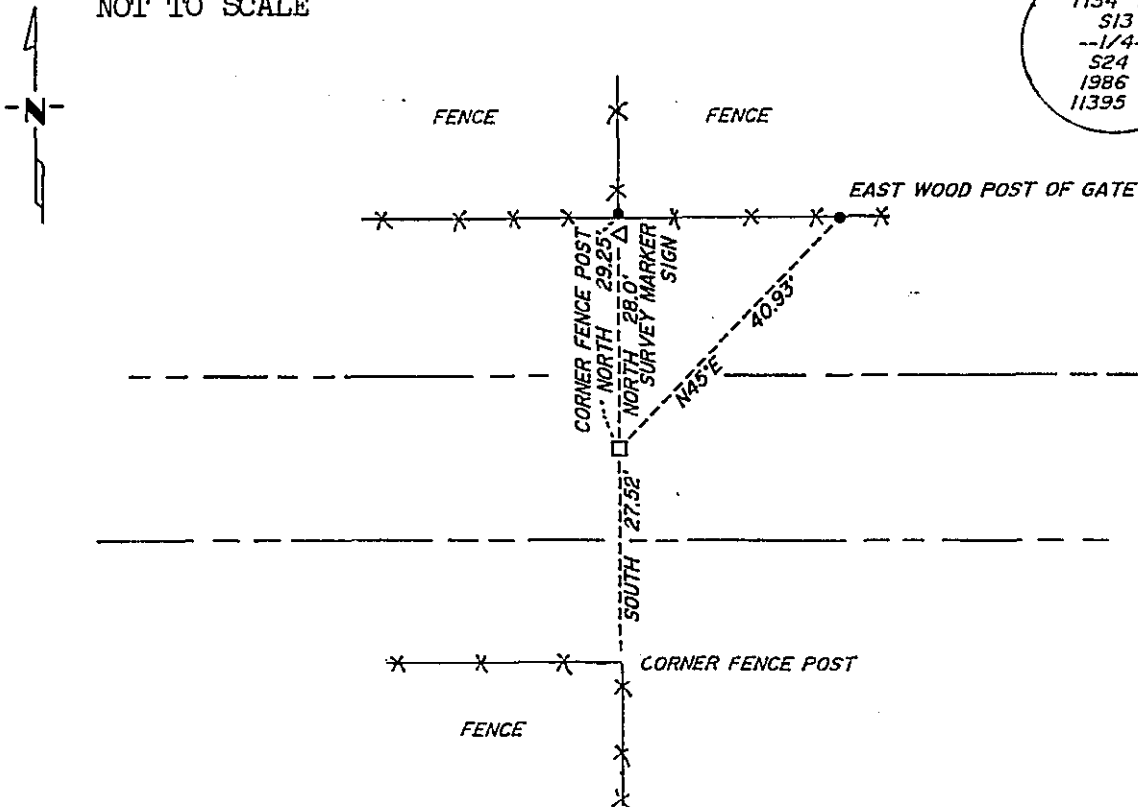
left monument as found,  lowered monument,  removed monument (explain)

On 10/06/86 placed a 2" x 18" telespar with aluminum cap down 10" in centerline of east to west road in line with fences north and south.  
DATE

### SKETCH OF REFERENCE TIES

NOT TO SCALE

T134 R31  
S13  
--1/4--  
S24  
1986  
11395



Statement of evidence relative to this corner location is on back of page.

319100

I hereby certify that this document and the data contained herein was prepared by me or under my direct supervision.

Walter P. Pava  
SIGNATURE

3-15-90  
DATE

Registration No. 11395

- Land Surveyor
- County Surveyor

OFFICE OF THE COUNTY RECORDER

County of Cass

I hereby certify that this document was filed in the Co. Recorders office at 3:55 P. M. on the 19 day of March A.D., 19 90

County Recorder Claudia Keyler

By M.S., Deputy

DOCUMENT NO. 319100

Statement of Evidence:

N-23

North Quarter Corner, Section 24, T.134N., R.31W., 5th P.M.

- 1869 U.S. General Land Office survey set a wood post for this corner and marked the following bearing trees: a 3" Spruce N3W 68 links, 3" Aspen S72W 18 links.
- 1986 On May 16, Cass County Survey Technician Terry Freeman and backhoe operator Glen Williams dug in the area of the east to west road and the fences north and south. They dug an area 9' north to south by 12' east to west by 3' deep. They found 0.5' of top, 0.75' of fill, and dug 0.75' into natural sand and gravel.
- 1986 On October 6, Terry Freeman placed a telespar monument with a stamped aluminum cap down 10" in the centerline of the road going east to west in line with the fences to the north and to the south.