

# CERTIFICATE OF LOCATION OF GOVERNMENT CORNER

North Quarter Corner of Section 23, Township 134 N, Range 31 W, 5th P.M.

STATE OF MINNESOTA, County of Cass

At the corner location shown on the sketch:

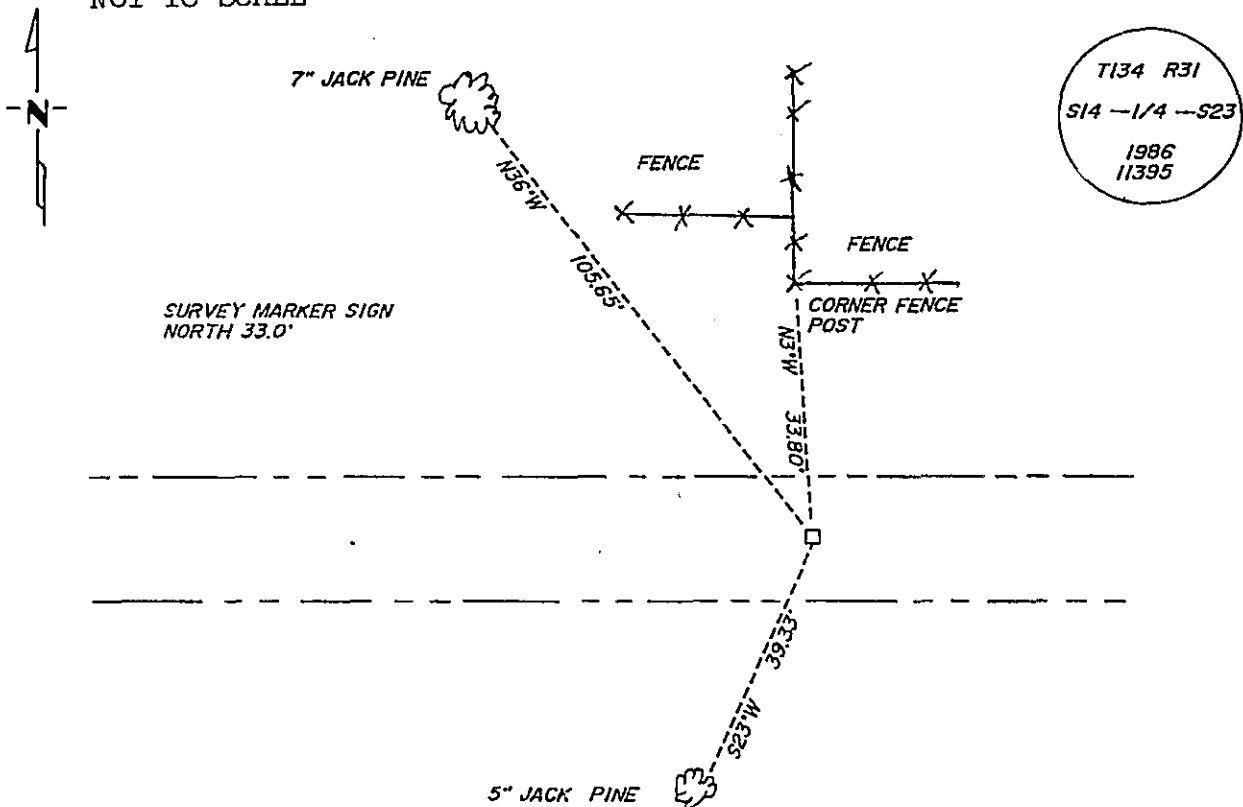
On \_\_\_\_\_ found a \_\_\_\_\_  
DATE

left monument as found,  lowered monument,  removed monument (explain)

On 1986 placed a 2" x 18" telespar monument with a stamped aluminum cap down 8" in centerline of east to west road.

NOT TO SCALE

SKETCH OF REFERENCE TIES



T134 R31  
S14 -1/4 -S23  
1986  
11395

Statement of evidence relative to this corner location is on back of page. 319099

I hereby certify that this document and the data contained herein was prepared by me or under my direct supervision.

Walter L. Lane 3-15-90  
SIGNATURE DATE

Registration No. 11395

- Land Surveyor
- County Surveyor

OFFICE OF THE COUNTY RECORDER

County of Cass

I hereby certify that this document was filed in the Co. Recorders office at 3:50 P. M. on the 19 day of March A.D., 19 90

County Recorder Cladine Kayler

By M.S., Deputy

DOCUMENT NO. 319099

Statement of Evidence:

N-19

North Quarter Corner, Section 23, T. 134 N., R. 31 W.  
5th P.M.

- 1869 U.S. General Land Office survey set a wood post for this corner and marked the following bearing trees: 2" Aspen N. 56 E., 12 Lks, 2" Aspen S. 10 E. 23 Lks.
- 1986 On May 16, Terry Freeman, Cass County Survey Technician, and Glen Williams, backhoe operator, dug in area of East to West road, and fence N. Dug 9' North to South by 12' East to West by 2.5' deep. Top 3", 9" fill, 1.5' sandy gravel natural soil.
- 1986 Terry Freeman placed a 2"x 18" telespar monument with a stamped aluminum cap down 8" in centerline of the road going east to west.