

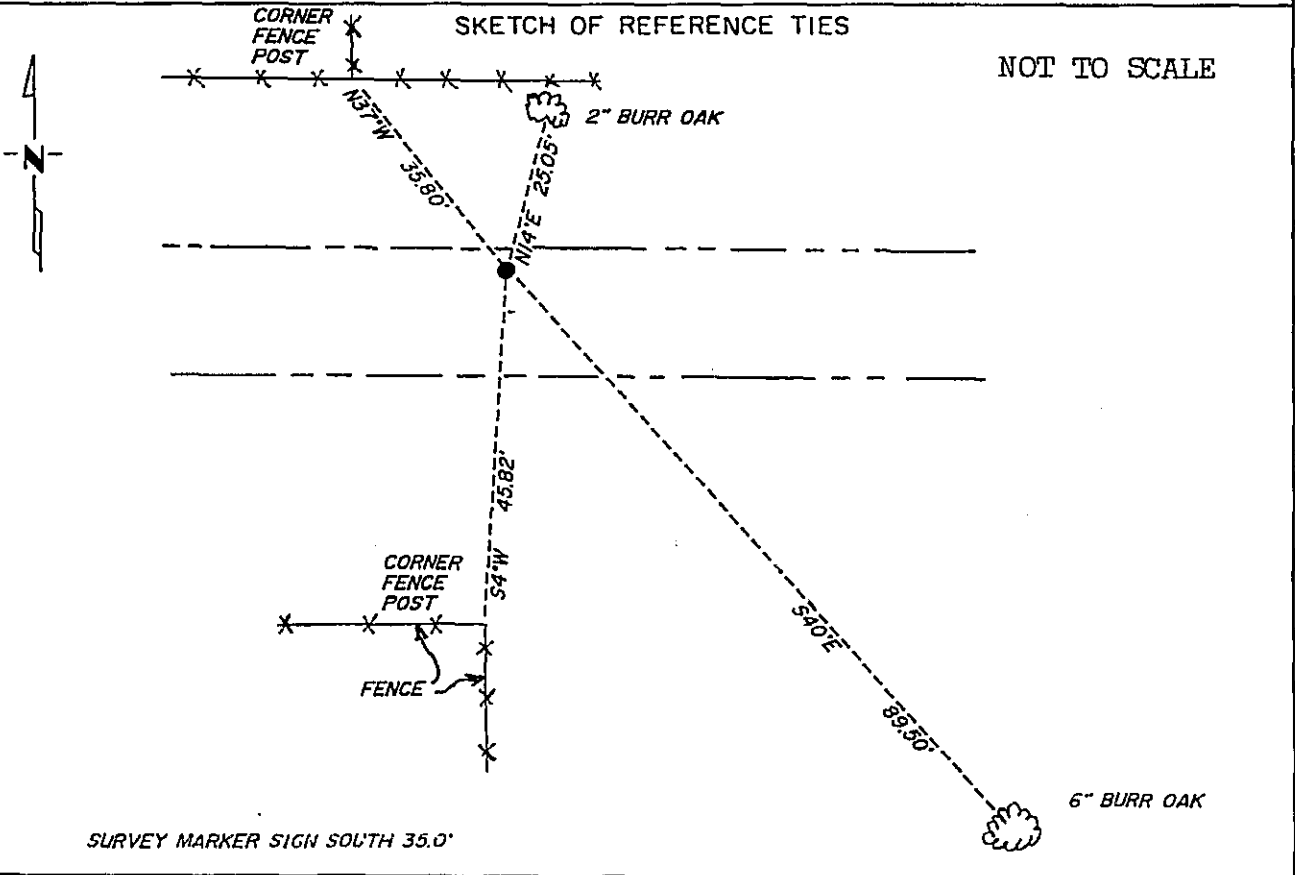
CERTIFICATE OF LOCATION OF GOVERNMENT CORNER

North $\frac{1}{4}$ Corner of Section 16, Township 134N., Range 31W., 5th P.M.

STATE OF MINNESOTA, County of Cass

At the corner location shown on the sketch:

- On 10/30/85 found a 2" iron pipe 6' north of the centerline of the east to west road. Its top was split and twisted.
 - left monument as found, lowered monument, removed monument (explain)
- On _____ placed a _____



Statement of evidence relative to this corner location is on back of page. 319096

I hereby certify that this document and the data contained herein was prepared by me or under my direct supervision.

Walter E. Cass 3-15-90
SIGNATURE DATE

Registration No. 11395

Land Surveyor

County Surveyor

OFFICE OF THE COUNTY RECORDER
County of Cass

I hereby certify that this document was filed in the Co. Recorders office at 3:35 P.M. on the 19 day of March A.D., 19 90

County Recorder Claudine Kayler
By ms, Deputy

DOCUMENT NO. 319096

Statement of Evidence:

J-11

North Quarter Corner, Section 16, T.134N., R.31W., 5th P.M.

- 1869 U.S. General Land Office survey set a wood post for this corner and marked the following bearing trees: a 16" Aspen N13E 8 links and a 6" Aspen S27E 17 links.
- 1915 County Survey Record Book "B", pages 490-495, show a survey by N.D. Gorman. He set the corner proportionally with an iron monument.
- 1985 On October 30, Cass County Survey Technician Terry Freeman found a 2" iron pipe down 0.2' with the top of it split and twisted.
- 1986 On October 23, Terry Freeman and Norman Morris lowered the monument 6".