

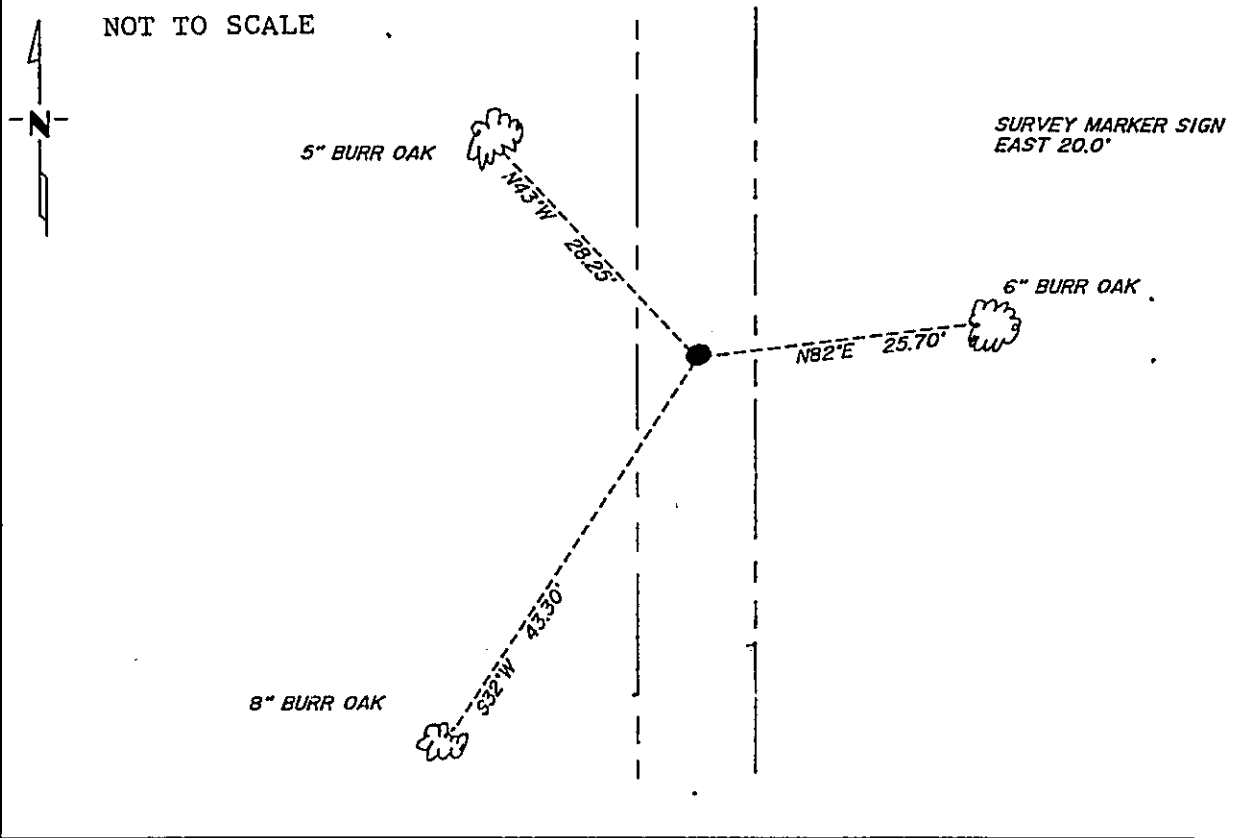
CERTIFICATE OF LOCATION OF GOVERNMENT CORNER

East Quarter _____ Corner of Section 25, Township 134N, Range 31W, _____ P.M.
 STATE OF MINNESOTA, County of Cass

At the corner location shown on the sketch:

- On _____ found a _____
DATE
- left monument as found, lowered monument, removed monument (explain)
- On 9/17/86 placed a cast iron monument down 0.5' in the
DATE
centerline of the north to south road with field line east.

SKETCH OF REFERENCE TIES



Statement of evidence relative to this corner location is on back of page. 318882

I hereby certify that this document and the data contained herein was prepared by me or under my direct supervision.

Walt Larsen 2-28-90
SIGNATURE DATE

Registration No. 11395

Land Surveyor
 County Surveyor

OFFICE OF THE COUNTY RECORDER
 County of Cass

I hereby certify that this document was filed in the Co. Recorders office at 3:45 P.M. on the 6 day of March A.D., 19 90

County Recorder Clairice Kaylor
 By ms, Deputy

DOCUMENT NO. 318882

Statement of Evidence:

T-25

East Quarter Corner, Section 25, T.134N., R.31W., 5th P.M.

- 1858 U.S. General Land Office survey set a wood post for this corner and marked the following bearing trees: a 10" Pitch Pine N45W 9 links and an 8" Pitch Pine S20E 14 links.
- 1986 On May 16, Cass County Survey Technician Terry Freeman and backhoe operator Glen Williams dug in the area of the north to south road and of the field line to the east. The area that they dug was 12' north to south by 8' east to west by a depth of 2'. They found a top of 0.25' then fill of 0.75'. They then dug into natural sandy-gravel of 1'.
- 1986 On September 17, Terry Freeman set a cast iron monument in the centerline of the north to south road in line with a field line to the east.