

CERTIFICATE OF LOCATION OF GOVERNMENT CORNER

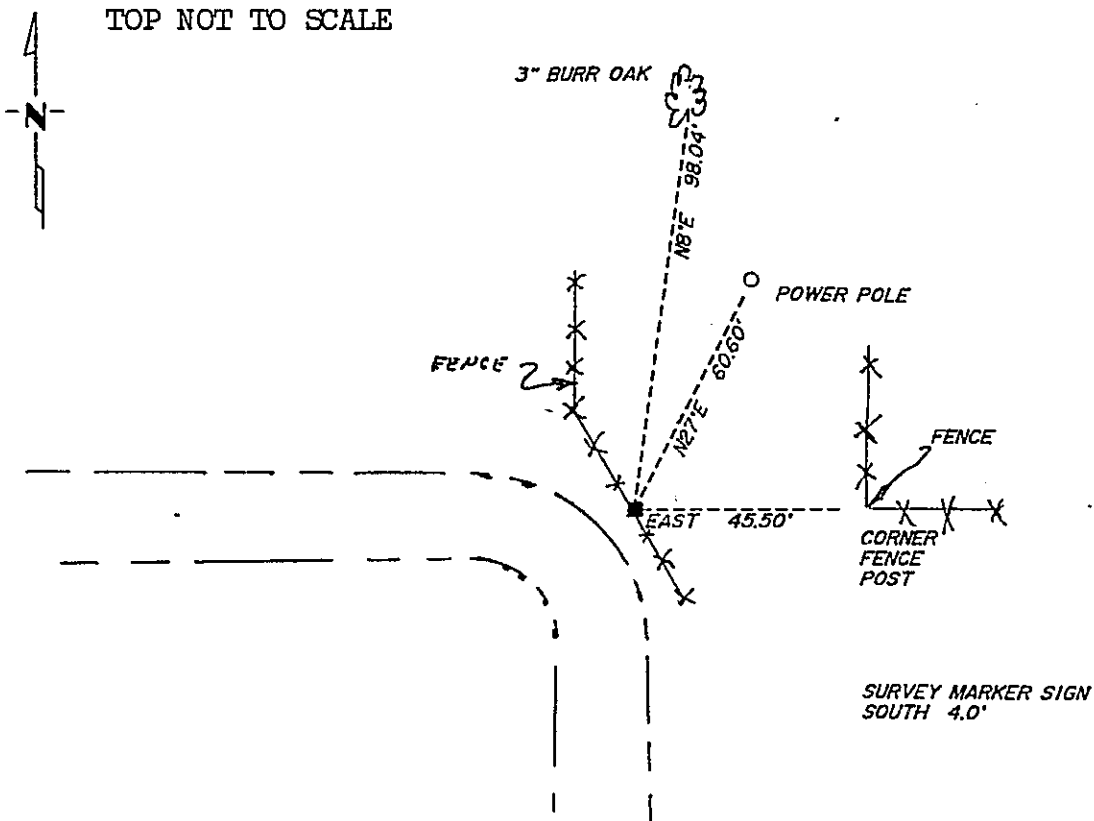
Northeast Corner of Section 24, Township 134N., Range 31W., 5th P.M.

STATE OF MINNESOTA, County of Cass

At the corner location shown on the sketch:

- On 5/16/86 found a an 8" square stone down 0.1' and 1.8'
DATE
northwest of gate post
 - left monument as found, lowered monument, removed monument (explain)
- On 10/6/86 placed a 1 1/2" x 30" iron pipe on the north side of
DATE
the stone flush with top of stone

SKETCH OF REFERENCE TIES



Statement of evidence relative to this corner location is on back of page. 318243

I hereby certify that this document and the data contained herein was prepared by me or under my direct supervision.

Walt E. Carr 1-29-90
SIGNATURE DATE

Registration No. 11395

- Land Surveyor
- County Surveyor

OFFICE OF THE COUNTY RECORDER

County of Cass

I hereby certify that this document was filed in the Co. Recorders office at 4:15 P.M. on the 31 day of January A.D., 19 90

County Recorder Clonnie Kayle

By MS, Deputy

DOCUMENT NO. 318243

Northeast Corner, Section 24, T.134N., R.31W. 5th P.M.

- 1858 U.S. General Land Office survey set a wood post for this corner and marked the following bearing trees: 10" Pine N 70 E, 29 Lks, 18" Pine S 77 W 21 Lks, 18" Pine S 55 E, 12 Lks, 7" Pine N 38 W 27 Lks.
- 1908 County Survey Record Book "A", pages 52-53, show a survey by John Curo. He set an 8"x8"x36" stone from the testimony of corner set by old county surveyor, Mr. Whitely.
- 1986 On May 16, Terry Freeman, Cass County Survey Technician, and backhoe operator, Glen Williams, found an 8" square stone down 0.1', 1.8' NW of gate post. The old post will be replaced. The following bearings were marked: Fencepost E 45.5' and Power pole N 22 E 60.6'.
- 1986 On October 6, Terry Freeman placed a 1½"x 30" iron pipe on the north side of the stone flush with the top of the stone.