

CERTIFICATE OF LOCATION OF GOVERNMENT CORNER

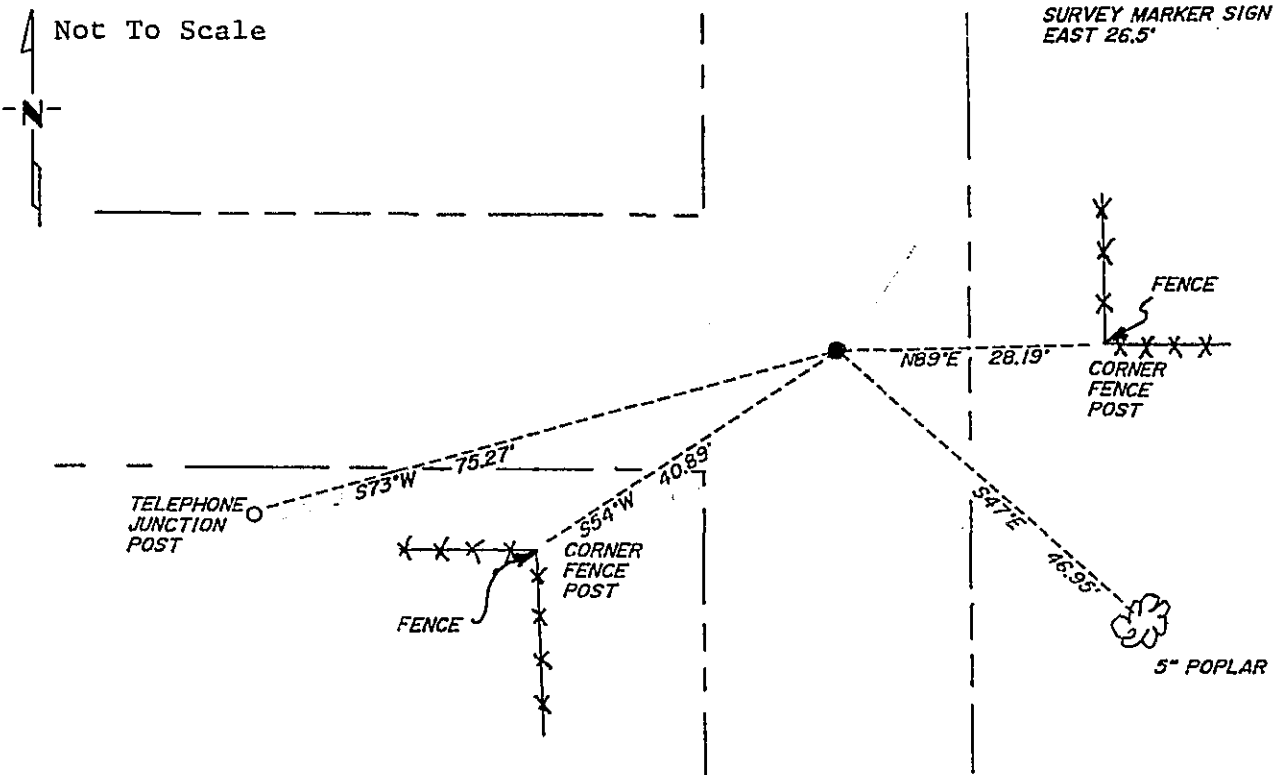
Northeast Corner of Section 20, Township 134N., Range 31W., 5th P.M.

STATE OF MINNESOTA, County of Cass

At the corner location shown on the sketch:

- On 10/30/85 found a 2½" iron pipe flush with ground with the top twisted and split.
 - left monument as found, lowered monument, removed monument (explain)
- On 8/11/87 ~~removed~~ lowered the pipe 1' underground

SKETCH OF REFERENCE TIES



Statement of evidence relative to this corner location is on back of page. 318241

I hereby certify that this document and the data contained herein was prepared by me or under my direct supervision.

Walter E. Pava 1-29-90
SIGNATURE DATE

Registration No. 11395
 Land Surveyor
 County Surveyor

OFFICE OF THE COUNTY RECORDER
 County of Cass

I hereby certify that this document was filed in the Co. Recorders office at 4:13 P.M. on the 31 day of January A.D., 19 90

County Recorder Claudia Kayla
 By MS Deputy
 DOCUMENT NO. 318241

Statement of Evidence:

N-9

Northeast Corner, Section 20, T.134N., R.31W., 5th P.M.

- 1869 U.S. General Land Office survey set a wood post for this corner and marked the following bearing trees: a 3" Aspen S30E 22 links, a 3" Aspen S35W 18 links, a 3" Aspen N80E 37 links, and a 3" Aspen N38W 34 links.
- 1915 County Survey Record Book "B", pages 490-495 show a survey by N.D. Gorman. He set the corner proportionally.
- 1985 On October 30, Cass County Survey Technician Terry Freeman found a 2½" iron pipe with the top flush with the ground and the top was twisted and split.
- 1987 On August 11, Terry Freeman lowered the above mentioned 2½" iron pipe 1' underground.