

# CERTIFICATE OF LOCATION OF GOVERNMENT CORNER

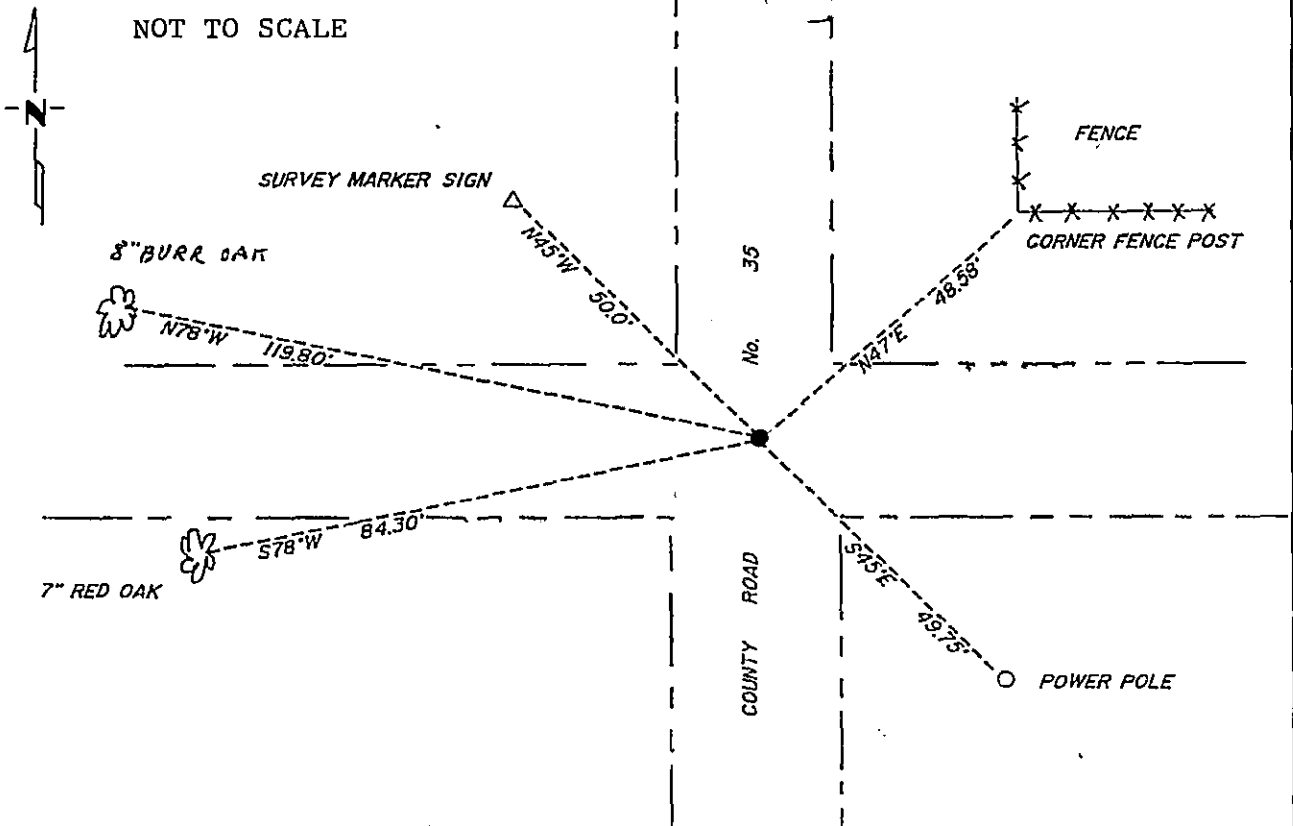
Northeast Corner of Section 9, Township 133N., Range 31W., \_\_\_\_\_ P.M.

STATE OF MINNESOTA, County of Cass

At the corner location shown on the sketch:

- On 10/24/85 found a 2" iron pipe down 0.6' at the intersection  
DATE  
of roads north to south and east to west.  
 left monument as found,  lowered monument,  removed monument (explain)
- On \_\_\_\_\_ placed a \_\_\_\_\_  
DATE

### SKETCH OF REFERENCE TIES



Statement of evidence relative to this corner location is on back of page. 317964

I hereby certify that this document and the data contained herein was prepared by me or under my direct supervision.

Walter P. Cass 1-22-90  
SIGNATURE DATE

Registration No. 11395

- Land Surveyor
- County Surveyor

OFFICE OF THE COUNTY RECORDER  
 County of Cass

I hereby certify that this document was filed in the Co. Recorders office at 2:00 P.M. on the 22 day of January A.D., 19 90

County Recorder Cladine Kayler  
 By MS, Deputy

DOCUMENT NO. 317964

Statement of Evidence:

E-13

Northeast Corner, Section 9, T.133N., R.31W., 5th P.M.

- 1863 U.S. General Land Office survey set a wood post for this corner and marked the following bearing trees: a 4" Spruce N72E 4 links, a 5" Spruce S48E 15 links, a 4" Spruce N48W 3 links, and a 5" Spruce S41W 9 links.
- 1915 County Survey Record Book "C", page 83, shows a survey by E.B. Horst. He found an iron monument.
- 1985 On October 24, Cass County Survey Technician Terry Freeman found a 2" iron pipe down 0.6' in intersection of roads north to south and east to west.
- 1986 On October 28, Terry Freeman and Norman Morris marked the bearing trees as shown on the front of this certificate.