

CERTIFICATE OF LOCATION OF GOVERNMENT CORNER

#8 Meander Corner of Section 11/14, Township 143, Range 30, 5th P.M.

STATE OF MINNESOTA, County of Cass

At the corner location shown on the sketch:

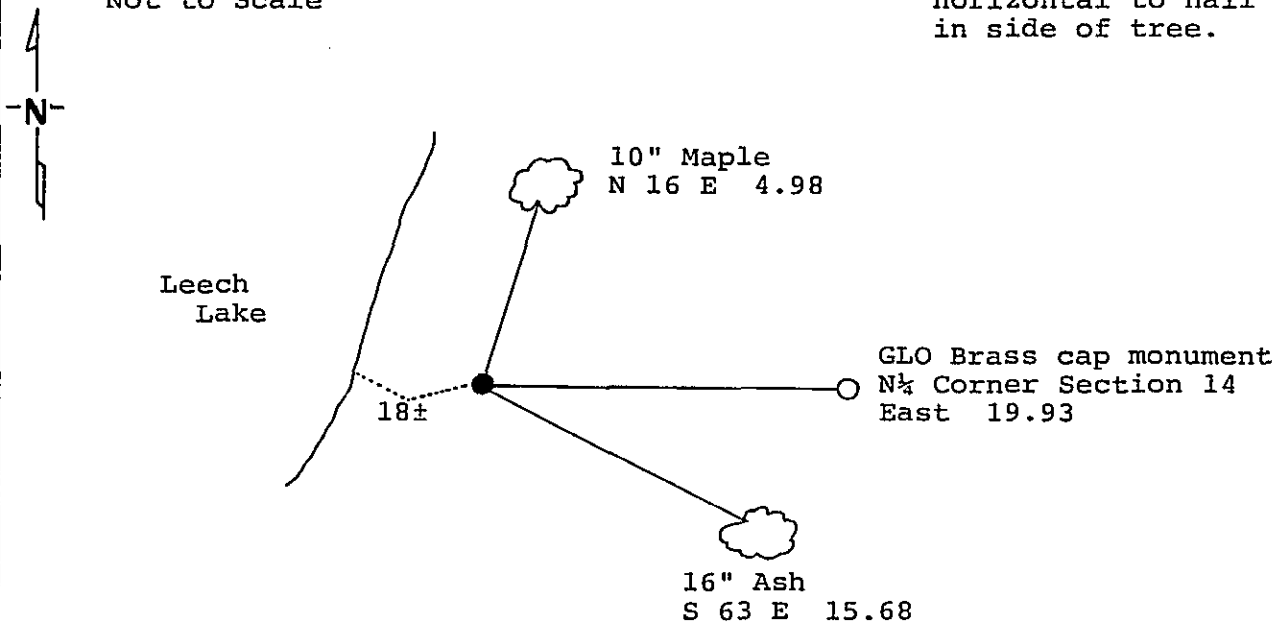
On 11/17/89 found a 1" GLO iron pipe with brass cap with rocks
piled^{DATE} around corner.

left monument as found, lowered monument, removed monument (explain)

On _____ placed a _____
DATE

Magnetic Decl: 5° East SKETCH OF REFERENCE TIES
Not to Scale

All distances are horizontal to nail in side of tree.



Monument is 18'± Easterly of shore of Leech Lake on top of ice ridge.
7' Steel sign post East 2.0'

Monument Stamped
T 143 N
MC / S 11
S 14
R 30 W
1924

Statement of evidence relative to this corner location is on back of page. 317228

I hereby certify that this document and the data contained herein was prepared by me or under my direct supervision

[Signature] 11/29/89
SIGNATURE DATE

Registration No. 17008

Land Surveyor, Professional Engineer
 County Surveyor, County Engineer

OFFICE OF THE REGISTER OF DEEDS

County of Cass

I hereby certify that this document was filed in the Reg. of Deeds office at 3:40 P. M. on the 7 day of Dec. A.D., 1989

Register of Deeds Claudine Kayler

By MS, Deputy

DOCUMENT NO. 317228

Meander Corner Number 8, Sections 11 and 14,
Township 143 North, Range 30 West, Cass County,
Minnesota

- 1875 B.C. Baldwin, U.S. Deputy Surveyor, originally established this corner position while subdividing Township 143 North, Range 30 West. The notes indicate a wood post was set to mark the corner position and the following witnesses: a 12 inch Sugar South 75 degrees West a distance of 24 links; and a 6 inch Elm North 1 degree West a distance of 9 links.
- 1924 U.S. General Land Office dependent resurvey determined that the original corner falls in the lake. They set a 1 inch by 36 inch iron pipe 18 inches in the ground in a mound of stone with a marked brass cap. Since the corner is only 34 links from the North Quarter corner of Section 14, no bearing trees were marked so that no confusion would arise from bearing trees marked for both corners.
- 1973 R.F. Schneider, Registered Land Surveyor Number 5740, found the General Land Office brass cap monument in place 20.00 feet West from the found North Quarter corner for Section 14. He marked the following bearing trees: a 10 inch Maple South 20 degrees East a distance of 19.07 feet; a 32 inch Elm South 45 degrees East a distance of 49.78 feet; and a 12 inch Elm South 70 degrees East a distance of 15.01 feet.
- 1989 On November 17, a Landecker-Stevenson & Associates, Inc., survey crew visited the corner and found the following evidence: a 1 inch General Land Office brass capped monument up 18 inches in good condition; R.F. Schneider's 1973 Maple Southeast is gone and both 1973 Elm bearing trees are dead. New bearing trees were marked and a steel sign post set as shown on front of this certificate.