

# CERTIFICATE OF LOCATION OF GOVERNMENT CORNER

North Quarter Corner of Section 19, Township 141 N, Range 30 W, 5th P.M.

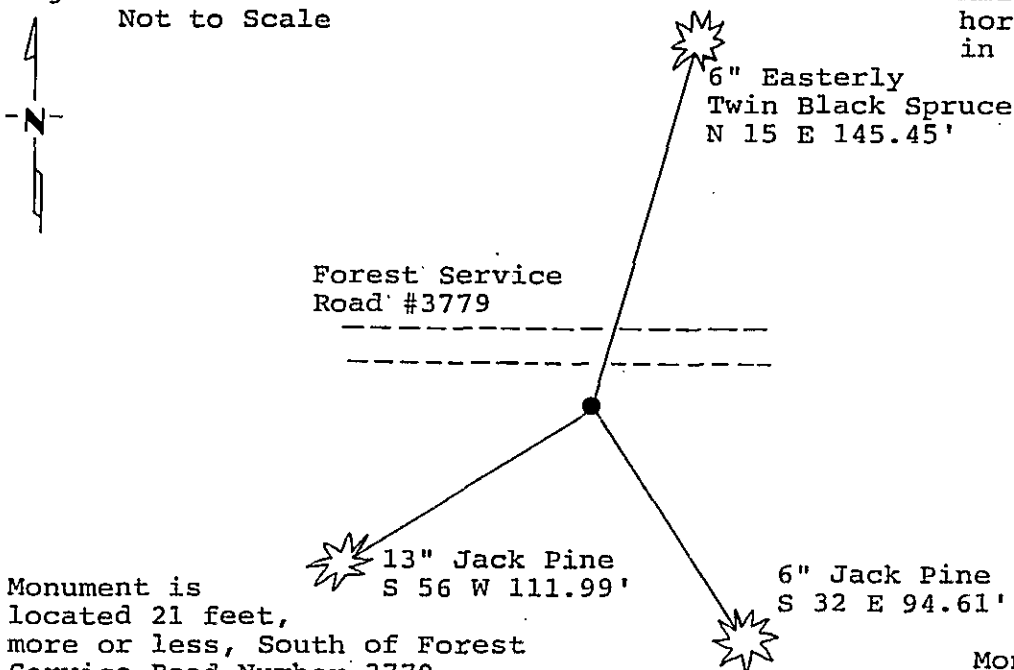
STATE OF MINNESOTA, County of Cass

At the corner location shown on the sketch: Latitude: 47° 01' 25.966"  
 Longitude: 94° 31' 26.047"

- On 8/1/88 found a 3 inch capped aluminum monument below 1 inch iron monument: ( removed 1 inch iron monument ).  
 left monument as found,  lowered monument,  removed monument (explain)
- On 8/1/88 placed a 2 inch by 24 inch iron monument with brass cap over 3 inch capped aluminum monument.

Magnetic Decl: 5° East SKETCH OF REFERENCE TIES  
 Not to Scale

All distances are horizontal to nail in side of tree.



Monument is located 21 feet, more or less, South of Forest Service Road Number 3779.  
 8' Steel sign post East 5.0'  
 8' Steel sign post South 5.0'  
 All trees are painted with red enamel and marked with a 54-3 (bearing tree) tag.

Monument Stamped  
 T141N R30W  
 1/2 S18  
 S19  
 1988  
 RLS 17008

Statement of evidence relative to this corner location is on back of page.

I hereby certify that this survey, plan or report was prepared by me or under my direct supervision and that I am a duly Registered Land Surveyor under the laws of the State of Minnesota.

David S. Landecker  
 David S. Landecker  
 Date 9-15-89 Registration No. 17008

315248  
 OFFICE OF THE COUNTY RECORDER  
 County of CASS

I hereby certify that this document was filed in the Co. Recorders office at 1:30 .M. on the 21 day of Sept A.D., 1989  
 County Recorder Claudine Kayler  
 By \_\_\_\_\_, Deputy  
 DOCUMENT NO. 315248

Statement of Evidence: North Quarter Corner, Section 19, Township 141  
North, Range 30 West, Cass County, Minnesota

N-3 141-30  
Bk.5 Pg.16

1873 P.H. Conger, U.S. Deputy Surveyor, originally established this corner position while subdividing Township 141 North, Range 30 West. The notes indicate a wood post was set to mark the corner position and the following witnesses: a 6 inch Tamarack North 3 degrees East a distance of 92 links; and a 3 inch Tamarack North 19 degrees West a distance of 33 links.

1914 County Surveyor's Record Book B pages 516-520 show survey by James Middleton. He found stake set from old government bearing trees.

1917 U.S. General Land Office dependent resurvey reestablished this corner position from original evidence. A wood post was set to mark the corner. The southwest bearing tree stump was found.

1964 U.S. Forest Service records show the following: a 1 and 1/2 inch iron pipe was found laying on the ground, rotted post and possible Southwest bearing tree, a rotted stump.

1970 Dean Anderson, Licensed Land Surveyor Number 3091, found old wood post. He set a 3 inch iron pipe with an aluminum cap and marked four tie trees.

1977 U.S. Forest Service found the corner monumented with a 3 inch aluminum capped iron pipe with RLS number 3091 on it. The following bearing trees were found: a 7 inch White Pine South 79 degrees East a distance of 18.0 feet; a 12 inch Jack Pine North 17 degrees East a distance of 57.7 feet; a 14 inch Jack Pine South 42 degree ; West a distance of 47.3 feet; and a 3 inch Red Pine North 44 degrees West a distance of 63.3 feet.

1986 U.S. Forest Service crews set an aerial target over this corner position for determination of coordinate values through the use of GPS on the Chippewa South Boundary Project Cadastral Survey U.S. Project Number 53-6392-8-219. This target allowed for the search and location of this corner.

1988 on July 22 a Landecker-Stevenson & Associates crew visited the corner and found the following evidence: a 1 inch iron pipe, under target, with old weld marks on top edge; all four bearing trees are dead; Northwest is 2 foot stump; no evidence of original accessories.

# CERTIFICATE OF LOCATION OF GOVERNMENT CORNER

North Quarter Corner Section 19, Township 141 North, Range  
30 West, Cass County, Minnesota

N-3 141-30  
Bk.5 Pg.16

1988 on August 1 a Landecker-Stevenson & Associates crew visited the corner and found the following evidence: the 3 inch capped aluminum monument set by Anderson down 19 inches, 0.18 feet West and 0.08 feet South of 1 inch iron pipe found previously. Set at location was a 2 inch by 24 inch iron pipe with brass cap and rerod in bottom for anchor, over aluminum capped pipe, 21 feet Southerly of centerline of Forest Service road. New bearing trees marked: Easterly of twin 6 inch Black Spruce North 15 degrees East a distance of 145.45 feet, a 13 inch Jack Pine South 56 degrees West a distance of 111.99 feet; and a 6 inch Jack Pine South 32 degrees East a distance of 94.61 feet. Set 8 foot steel sign posts South 5.0 feet and East 5.0 feet with signs 54-2 and 54-9.

NOTE: This certificate is filed to correct the latitude and longitude of the corner as shown on the front of that Certificate of Location of Government Corner filed on March 1, 1989 as Document Number 310676.