

CERTIFICATE OF LOCATION OF GOVERNMENT CORNER

North Quarter Corner of Section 31, Township 141 N, Range 30 W, 5th P.M.

STATE OF MINNESOTA, County of Cass

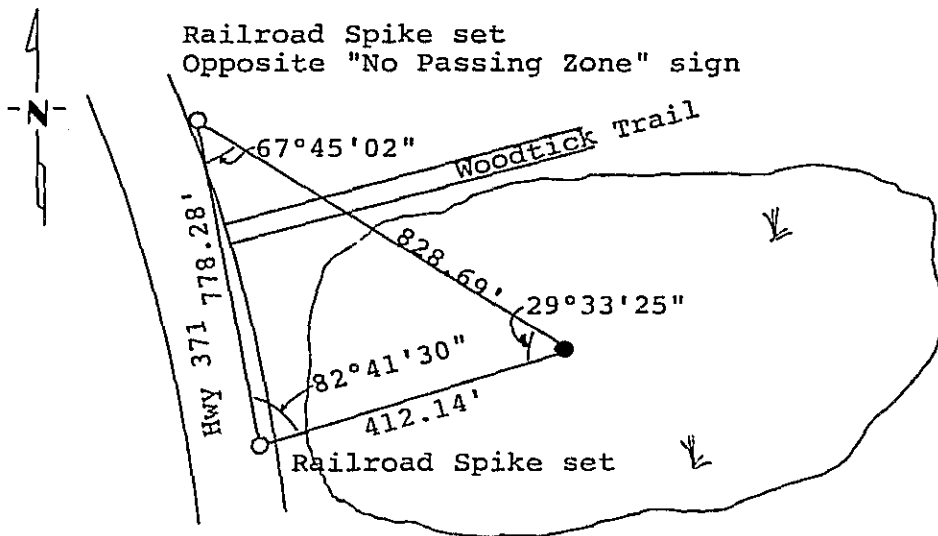
At the corner location shown on the sketch: Latitude: 46° 59' 41.310"
 Longitude: 94° 31' 24.833"

On 4/16/86 found a 2 inch by 36 inch galvanized capped County
DATE
iron monument.

left monument as found, lowered monument, removed monument (explain)

On 3/3/88 placed a 2 inch by 48 inch iron pipe with brass cap
DATE
over 14 feet of steel sign posts

SKETCH OF REFERENCE TIES



8' steel sign post N 45 E 8.25'
 8' steel sign post South 8.40'
 8' steel sign post N 81 W 5.94'

No ties available. Corner was triangulated from two points set on edge of Highway 371.

Statement of evidence relative to this corner location is on back of page. 312 369

I hereby certify that this survey, plan or report was prepared by me or under my direct supervision and that I am a duty Registered Land Surveyor under the laws of the State of Minnesota.

David S. Landecker
 David S. Landecker
 Date 5-24-89 Registration No. 17008

OFFICE OF THE COUNTY RECORDER

County of Cass

I hereby certify that this document was filed in the Co. Recorders office at 10:45 A.M. on the 25 day of May A.D., 19 89

County Recorder Clairine Kaye

By MS, Deputy

DOCUMENT NO. 312 369

Statement of Evidence:

North Quarter Corner Section 31, Township 141
North, Range 30 West, Cass County, Minnesota

V-3 141-30

1873 P. H. Conger, U.S. Deputy Surveyor, originally established this corner position while subdividing Township 141 North, Range 30 West. The notes indicate a wood post was set to mark the corner position and the following witnesses: a 10 inch Tamarack South 76 degrees East a distance of 60 links; and a 12 inch Tamarack North 64 degrees East a distance of 76 links.

1895 R.E. Taft surveys the plat of Lothrop. Plat shows corner position.

1920 County Surveyor's Record Book C page 465 show survey by E.B. Horst. He set an iron pipe and marked two new bearing trees: an 8 inch Tamarack South 66 degrees West a distance of 46.35 feet; and a 6 inch Tamarack North 62 degrees East (no distance given). Corner was set proportionally.

1922 County Surveyor's Records, resurvey plat in cabinet E, Number 53, shows the 1920 survey by E.B. Horst. Plat shows iron monument set.

1969 R.F. Schneider, Registered Land Surveyor Number 5740, surveys the plat of Brown's Ten Mile Shores. Plat shows corner monumented.

1986 on April 16 U.S. Forest Service records show the following: U.S. Forest Service technicians chain to corner from West and found 2 inch capped iron pipe in place and old post point. Corner falls in flooded swamp.

1986 U.S. Forest Service crews set an aerial target over this corner position for determination of coordinate values through the use of GPS on the Chippewa South Boundary Project Cadastral Survey U.S. Project Number 53-6392-8-219. This target allowed for the search and location of this corner.

1988 on March 3, Cass County Surveyor's Office personnel Walt Curo, Licensed Land Surveyor Number 11395, and Terry Freeman and U.S. Forest Service personnel Curt Krause and Gary Brama replace found 2 inch by 36 inch iron pipe as set in 1920, with a 2 inch by 48 inch iron pipe with marked brass cap set over 14 feet of steel sign posts. No ties available. Steel sign posts set as noted on front of this certificate. Corner was triangulated in from 2 railroad spikes set near edge of blacktop. Old 2 inch capped iron pipe set alongside new iron pipe.

1989 Landecker-Stevenson & Associates accept the corner as set in 1920 and perpetuated in 1988 by Cass County and the U.S. Forest Service.