

CERTIFICATE OF LOCATION OF GOVERNMENT CORNER

Number 17 Meander Corner of Sections 32/33, Township 141 N, Range 29 W, 5th P.M.

STATE OF MINNESOTA, County of Cass

At the corner location shown on the sketch:

Latitude: 46° 59' 12.800"

Longitude: 94° 21' 54.368"

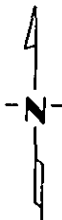
On _____ found a _____
DATE

left monument as found, lowered monument, removed monument (explain)

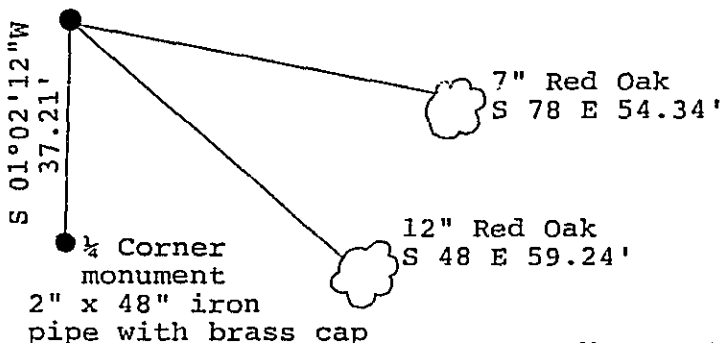
On 3/15/89 placed a 2 inch by 48 inch iron pipe with brass cap
DATE
and plastic base with magnet.

Magnetic Decl: 5° East SKETCH OF REFERENCE TIES
Not to Scale

All distances are horizontal to nail in side of tree.



Moccasin Lake



Monument is located 55'± Southerly of waters edge of Moccasin Lake.

8' steel sign post North 4.0'

All trees are painted with red enamel and marked with a 54-3 (bearing tree) tag.

Monument Stamped
T 141 N R 29 W

MC
532 | S33
1989
RLS 17008

Statement of evidence relative to this corner location is on back of page.

311947

I hereby certify that this survey, plan or report was prepared by me or under my direct supervision and that I am a duly Registered Land Surveyor under the laws of the State of Minnesota.

David S. Landecker
David S. Landecker
Date 5-1-89 Registration No. 17008

OFFICE OF THE COUNTY RECORDER

County of Cass

I hereby certify that this document was filed in the Co. Recorders office at 9:55 A. M. on the 9 day of May A.D., 1989

County Recorder Claudia Kayler

By ms, Deputy

DOCUMENT NO. 311947

Statement of Evidence:

Meander Corner Number 17 Section 32, Township 141
North, Range 29 West, Cass County, Minnesota

W-X 9 141-29

Bk.6 Pg.29

1873 P. H. Conger, U.S. Deputy Surveyor, originally established this corner position while subdividing Township 141 North, Range 30 West. The notes indicate a wood post was set to mark the corner position and the following witnesses: a 3 inch Poplar South 4 degrees East a distance of 9 links; and a 3 inch Poplar South 32 degrees West a distance of 28 links.

1986 U.S. Forest Service crews set an aerial target in the vicinity of this corner for the search and establishment of the true corner position. The target having coordinate values through the use of GPS on the Chippewa South Boundary Project Cadastral Survey U.S. Project Number 53-6392-8-219. This target allowed for the search and location of this corner.

1988 on September 23 a Landecker-Stevenson & Associates crew searched for the corner. The following information was found and noted: no evidence of original post or bearing trees was found.

1989 on March 14 and 15 a Landecker-Stevenson & Associates crew set a 2 inch by 48 inch iron pipe with brass cap, plastic base and magnet at the lost, single proportion position between Meander Corner Number 18 and the Southeast corner of Section 32. New bearing trees were marked as shown and a steel sign post was set as noted on front of this certificate.