

# CERTIFICATE OF LOCATION OF GOVERNMENT CORNER

Witness Corner to  
 North Quarter \_\_\_\_\_ Corner of Section 34, Township 141 N, Range 28 W, 5th P.M.

STATE OF MINNESOTA, County of Cass

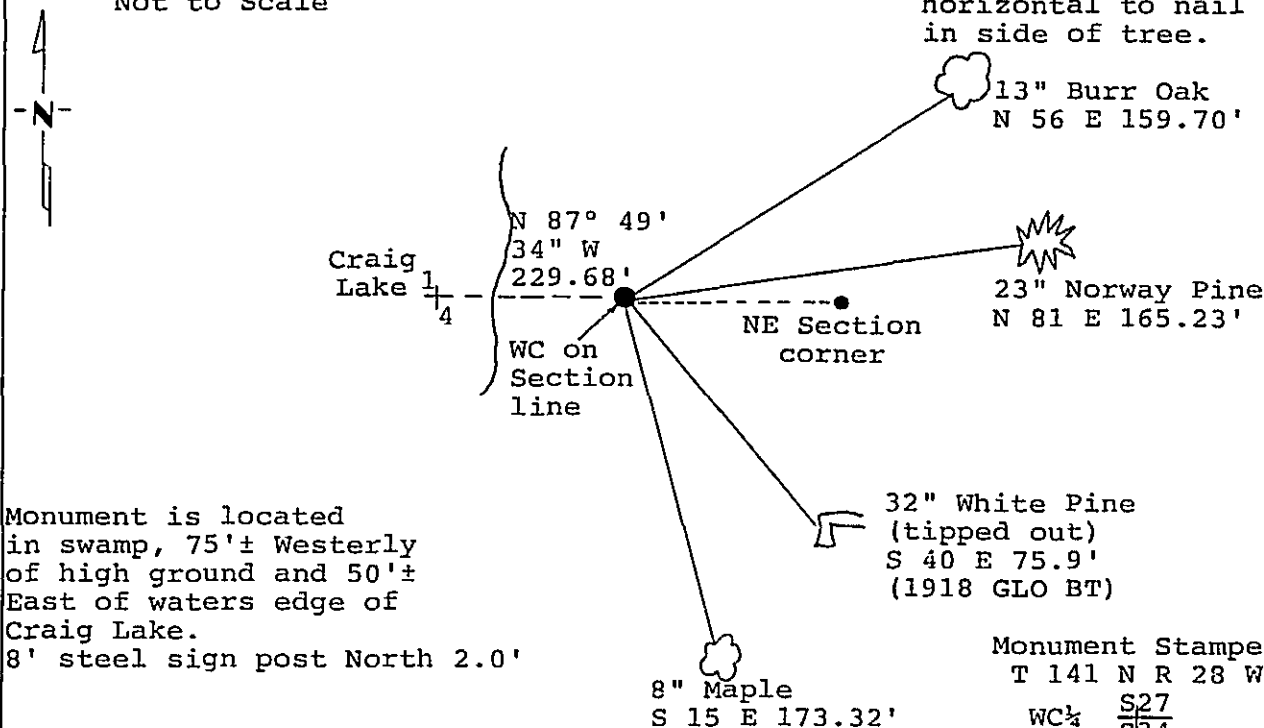
At the corner location shown on the sketch: Latitude: 46° 59' 34.744"  
 Longitude: 94° 12' 53.394"

- On 11/1/88 found a 1" by 36" iron monument with brass cap  
DATE
- left monument as found,  lowered monument,  removed monument (explain)
- On 3/1/89 placed a 3/4" by 13' aluminum rod with aluminum cap  
DATE

Magnetic Decl: 5° East  
 Not to Scale

### SKETCH OF REFERENCE TIES

All distances are horizontal to nail in side of tree.



All trees are painted with red enamel and marked with a 54-3 (bearing tree) tag.

Statement of evidence relative to this corner location is on back of page.

311943

I hereby certify that this survey, plan or report was prepared by me or under my direct supervision and that I am a duly Registered Land Surveyor under the laws of the State of Minnesota.

David S. Landecker  
 David S. Landecker  
 Date 5-1-89 Registration No. 17008

OFFICE OF THE COUNTY RECORDER  
 County of Cass

I hereby certify that this document was filed in the Co. Recorders office at 9:35 A.M. on the 9 day of May A.D., 19 89  
 County Recorder Claudine Kaye  
 By MS, Deputy  
 DOCUMENT NO. 311943

Statement of Evidence:

Witness Corner to North Quarter Corner Section  
34, Township 141 North, Range 28 West, Cass  
County, Minnesota

V-15 141-28  
Blk.7 Pg.43

1874 P.H. Conger, U.S. Deputy Surveyor, did not establish this corner while subdividing Township 141 North, Range 28 West. His notes indicate that the corner position fell in pond, therefore, not settable.

1918 U.S. General Land Office dependent resurvey established this witness corner to the quarter corner. The quarter corner was determined at the lost, single proportionate position between the Northeast and Northwest corners of said Section 34. A 1 inch by 36 inch iron pipe with a marked brass cap was set for the witness corner. The following bearing trees were marked: a 5 inch Spruce North 57 degrees East a distance of 69 links; and a 15 inch White Pine South 40 and 1/4 degrees East a distance of 115 links.

1963 George Claydon, plat of AUDITORS PLAT OF LONGVILLE shows witness corner in place.

1986 U.S. Forest Service records show the following: Forest Service technicians and Cass County Survey Technician find possible 1918 Southeast bearing tree (Pine). Unable to get to corner at this time, as it falls in boggy area.

1988 on November 1 a Landecker-Stevenson & Associates crew visited the corner and found the following evidence: General Land Office brass cap monument in swamp in poor condition. No sign of 1918 Spruce bearing tree, 1918 White Pine tipped out.

1989 on March 1 a Landecker-Stevenson & Associates crew tied out and removed the deteriorating General Land Office brass cap monument and set in its place a 3/4 inch by 13 foot aluminum rod with aluminum cap for witness to quarter corner in swamp. New bearing trees were marked as shown and a steel sign post was set as noted on front of this certificate.