

CERTIFICATE OF LOCATION OF GOVERNMENT CORNER

East Quarter Corner of Section 31, Township 141 N, Range 30 W, 5th P.M.

STATE OF MINNESOTA, County of Cass

At the corner location shown on the sketch: Latitude: 46° 59' 13.373"
Longitude: 94° 30' 46.886"

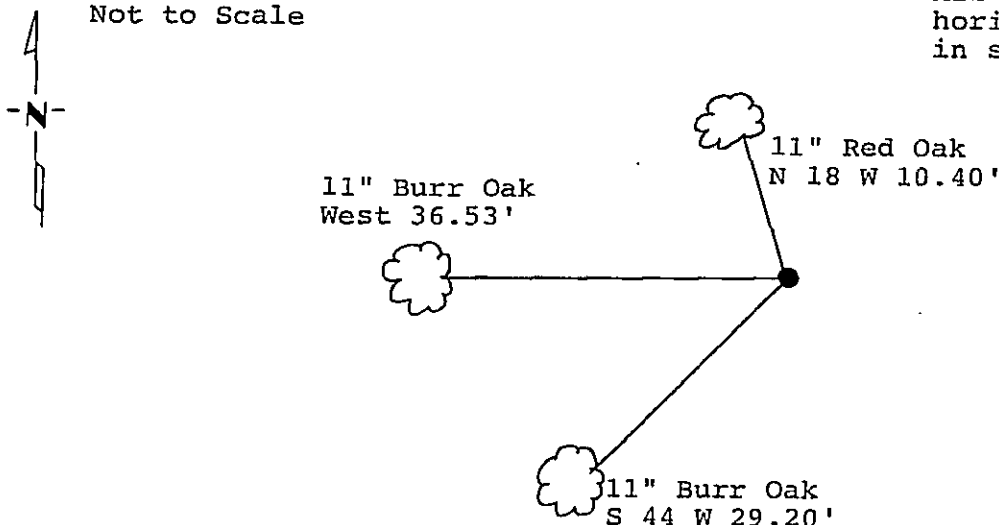
On _____ found a _____
DATE

left monument as found, lowered monument, removed monument (explain)

On 9/26/88 placed a 2 inch by 48 inch iron pipe with brass cap
DATE

Magnetic Decl: 5° East SKETCH OF REFERENCE TIES
Not to Scale

All distances are horizontal to nail in side of tree.



Monument is located 80 feet, more or less, east of large swamp in Aspen, Oak, and Birch.
8' Sign post North 4.0'

Monument Stamped
T 141 N R 30 W
S31+S32
1988
RLS 17008

All trees are painted with red enamel and marked with a 54-3 (Bearing Tree) tag.

Statement of evidence relative to this corner location is on back of page.

I hereby certify that this survey, plan or report was prepared by me or under my direct supervision and that I am a duly Registered Land Surveyor under the laws of the State of Minnesota.

David S. Landecker
Date 3/31/89 Registration No. 17008

311181
OFFICE OF THE COUNTY RECORDER
County of Cass

I hereby certify that this document was filed in the Co. Recorders office at 12:55 P.M. on the 3rd day of April A.D., 1989

County Recorder Claudine Kaylor
By Byk, Deputy

DOCUMENT NO. 311181

Statement of Evidence:

East Quarter Corner Section 31, Township 141
North, Range 30 West, Cass County, Minnesota

X-5 141-30
Bk.5 Pg.36

1873 P. H. Conger, U.S. Deputy Surveyor, originally established this corner position while subdividing Township 141 North, Range 30 West. The notes indicate a wood post was set to mark the corner position and the following witnesses: a 8 inch Poplar South 75 degrees West a distance of 21 links; a 10 inch Poplar North 7 and 1/2 degrees East a distance of 27 links.

1920 County Surveyor's record book C page 469 shows a survey by E.B. Horst. He established a proportional position for the Northeast corner of Section 31. No corner was indicated at this quarter corner position in their determination.

1986 U.S. Forest Service crews set an aerial target in the vicinity of this corner for the search and establishment of the true corner position. The target having coordinate values through the use of GPS on the Chippewa South Boundary Project Cadastral Survey U.S. Project Number 53-6392-8-219. This target allowed for the search and location of this corner.

1988 on September 26 a Landecker-Stevenson & Associates crew searched for the corner. The following information was found and noted: no evidence was found of the original bearing trees or post.

1988 on September 26 a Landecker-Stevenson & Associates crew set a 2 inch by 48 inch iron pipe with brass cap and base with magnet at the lost, single proportion position between the Northeast and Southeast corners of Section 31. New bearing trees were marked as shown and a steel sign post set as noted on front of this certificate.