

CERTIFICATE OF LOCATION OF GOVERNMENT CORNER

East Quarter Corner of Section 30, Township 141 N, Range 29 W, 5th P.M.

STATE OF MINNESOTA, County of Cass

Latitude: 47° 00' 03.913"

At the corner location shown on the sketch:

Longitude: 94° 23' 08.834"

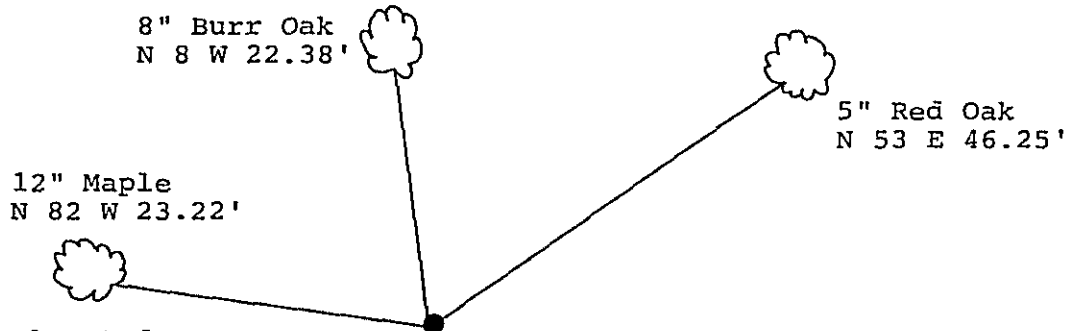
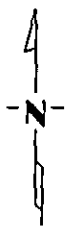
On _____ found a _____
DATE

left monument as found, lowered monument, removed monument (explain)

On 12/6/88 placed a 2 inch by 54 inch iron pipe with brass cap.
DATE

Magnetic Decl: 5° East SKETCH OF REFERENCE TIES
Not to Scale

All distances are horizontal to nail in side of tree.



Monument is located 100 feet, more or less, southerly of trail running easterly and westerly and 700 feet, more or less, south of Forest Service Trail Number 2111 and 100 feet, more or less, easterly and northerly of Tamarack swamp.
8' Sign post South 5.0'
8' Sign post East 5.0'

Monument Stamped
T 141 N R 29 W

S30 S29
1988
RLS 17008

All trees are painted with red enamel and marked with a 54-3 (Bearing Tree) tag.

Statement of evidence relative to this corner location is on back of page.

I hereby certify that this survey, plan or report was prepared by me or under my direct supervision and that I am a duly Registered Land Surveyor under the laws of the State of Minnesota.

David S. Landecker
David S. Landecker

Date 3/31/89 Registration No. 17008

311170
OFFICE OF THE COUNTY RECORDER
County of Cass

I hereby certify that this document was filed in the Co. Recorders office at 12:00 P .M. on the 3rd day of April A.D., 1989

County Recorder Claudine Kaylow

By Byk, Deputy

DOCUMENT NO. 311170

Statement of Evidence:

East Quarter Corner Section 30, Township 141
North, Range 29 West, Cass County, Minnesota

T-5 141-29
Bk.4 Pg.59

1873 P. H. Conger, U.S. Deputy Surveyor, originally established this corner position while subdividing Township 141 North, Range 29 West. The notes indicate a wood post was set to mark the corner position and the following witnesses: a 6 inch Poplar South 47 degrees East a distance of 3 links; and a 7 inch Burr Oak North 18 degrees West a distance of 5 links.

1986 U.S. Forest Service crews set an aerial target in the vicinity of this corner for the search and establishment of the true corner position. The target having coordinate values through the use of GPS on the Chippewa South Boundary Project Cadastral Survey U.S. Project Number 53-6392-8-219. This target allowed for the search and location of this corner.

1988 on July 8 a Landecker-Stevenson & Associates crew searched for the corner. No evidence of original post or bearing trees was found.

1988 on December 6 a Landecker-Stevenson & Associates crew set a 2 inch by 54 inch iron pipe with brass cap at the lost, single proportion position between the Northeast and Southeast corners of Section 30. New bearing trees were marked as shown and steel sign posts set as noted on front of this certificate.