

CERTIFICATE OF LOCATION OF GOVERNMENT CORNER

East Quarter _____ Corner of Section 22, Township 141 N, Range 30 W, 5th P.M.

STATE OF MINNESOTA, County of Cass

At the corner location shown on the sketch: Latitude: 47° 00' 56.176"
 Longitude: 94° 26' 59.139"

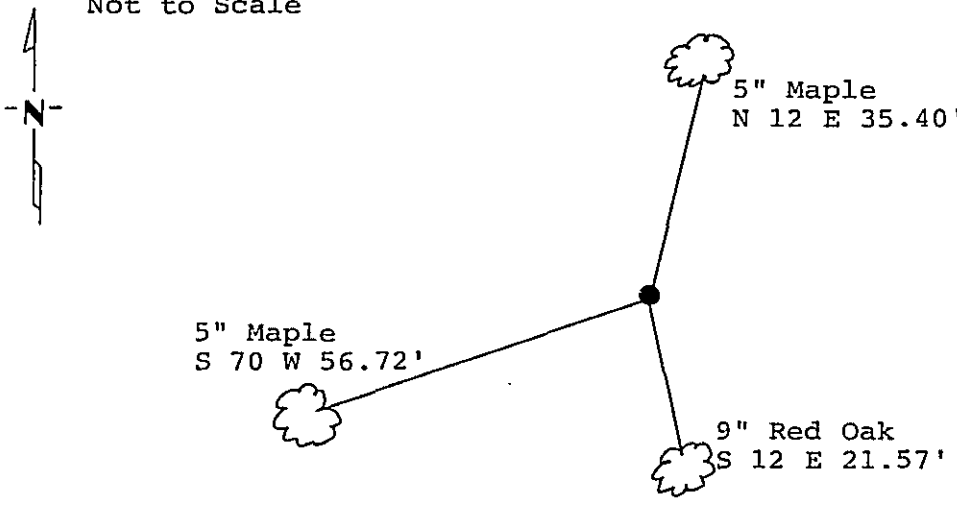
On _____ found a _____
DATE

left monument as found, lowered monument, removed monument (explain)

On 10/3/88 placed a 2 inch by 48 inch iron pipe with brass cap.
DATE

Magnetic Decl: 5° East SKETCH OF REFERENCE TIES
 Not to Scale

All distances are horizontal to nail in side of tree.



monument is located on top of Easterly running slope 200 feet, more or less, easterly of clearcut (now plantation).
 8' Sign post North 5.0'

All trees are painted with red enamel and marked with a 54-3 (Bearing Tree) tag.

Monument Stamped
 T 141 N R 30 W
 S22 | S23
 1988
 RLS 17008

Statement of evidence relative to this corner location is on back of page. 311061

I hereby certify that this survey, plan or report was prepared by me or under my direct supervision and that I am a duly Registered Land Surveyor under the laws of the State of Minnesota.
David S. Landecker
 David S. Landecker
 Date 3/24/89 Registration No. 17008

OFFICE OF THE COUNTY RECORDER
 County of Cass
 I hereby certify that this document was filed in the Co. Recorders office at 11:40 A.M. on the 27 day of March A.D., 1989
 County Recorder Claudine Kayler
 By MS, Deputy
 DOCUMENT NO. 311061

Statement of Evidence:

East Quarter Corner Section 22, Township 141
North, Range 30 West, Cass County, Minnesota

P-17 141-30
Bk.5 Pg.39

1873 P. H. Conger, U.S. Deputy Surveyor, originally established this corner position while subdividing Township 141 North, Range 30 West. The notes indicate a wood post was set to mark the corner position and the following witnesses: a 12 inch Poplar North 63 degrees West a distance of 55 links; and a 10 inch Red Oak North 38 degrees East a distance of 120 links.

1939 Civilian Conservation Corps set Forest Service Location Poster.

1964 U.S. Forest Service technician Esktrom found the 1939 Forest Service Location Poster. Tag states: approximate corner.

1986 U.S. Forest Service crews set an aerial target in the vicinity of this corner for the search and establishment of the true corner position. The target having coordinate values through the use of GPS on the Chippewa South Boundary Project Cadastral Survey U.S. Project Number 53-6392-8-219. This target allowed for the search and location of this corner.

1988 on September 28 a Landecker-Stevenson & Associates crew searched for the corner. No evidence was found of the original survey.

1988 on October 3 a Landecker-Stevenson & Associates crew set a 2 inch by 48 inch iron pipe with brass cap, plastic base and magnet at the lost single proportion position between the Northeast corner of Section 22 and the computed position for the Southeast corner of Section 22, said township. New bearing trees were marked as shown on front of this certificate and a steel sign post is in place as noted.