

# CERTIFICATE OF LOCATION OF GOVERNMENT CORNER

North Quarter \_\_\_\_\_ Corner of Section 33, Township 141 N, Range 30 W, 5th P.M.

STATE OF MINNESOTA, County of Cass

At the corner location shown on the sketch:

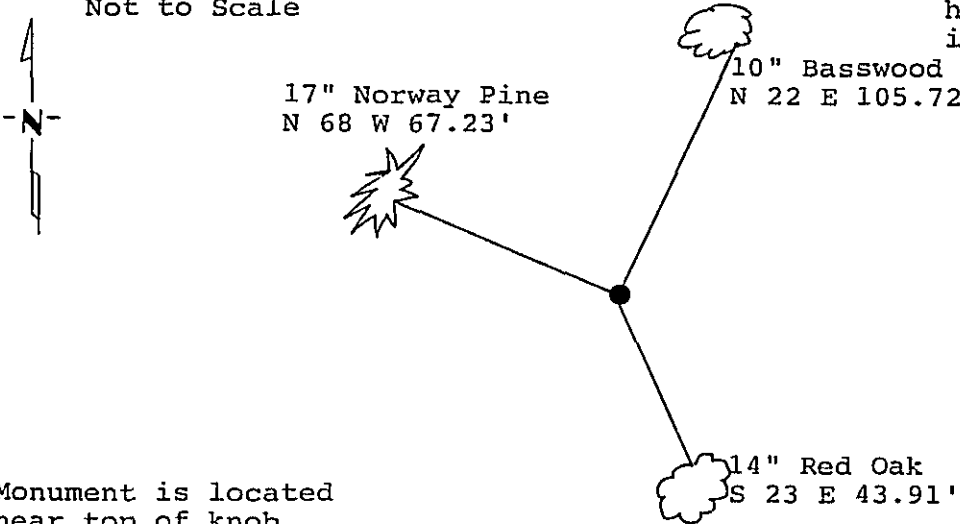
Latitude: 46° 59' 38.504"  
 Longitude: 94° 28' 52.890"

- On \_\_\_\_\_ found a \_\_\_\_\_  
DATE
- left monument as found,  lowered monument,  removed monument (explain)
- On 10/12/88 placed a 2 inch by 54 inch iron pipe with brass cap.  
DATE

Magnetic Decl: 5° East  
 Not to Scale

### SKETCH OF REFERENCE TIES

All distances are horizontal to nail in side of tree.



Monument is located near top of knob 500 feet, more or less, northeasterly of Woodtick Trail in Hardwood with scattering of Norway Pine.

8' Sign post West 5.0'  
 8' Sign post South 5.0'

All trees are painted with red enamel and marked with a 54-3 (bearing tree) tag.

Monument Stamped  
 T 141 N R 30 W

S	28
1/4 S	33

1988

RLS 17008

Statement of evidence relative to this corner location is on back of page.

310 875

I hereby certify that this survey, plan or report was prepared by me or under my direct supervision and that I am a duly Registered Land Surveyor under the laws of the State of Minnesota

David S. Landecker  
 David S. Landecker  
 Date 3/10/89 Registration No. 17008

### OFFICE OF THE COUNTY RECORDER

County of Cass

I hereby certify that this document was filed in the Co. Recorders office at 3:00 P. M. on the 14 day of March A.D., 1988

County Recorder Claudia Kayler  
 By MS, Deputy

DOCUMENT NO. 310 875

Statement of Evidence:

North Quarter Corner, Section 33, Township 141  
North, Range 30 West, Cass County, Minnesota

V-11 141-30  
Bk.5 Pg.57

1873 P. H. Conger, U.S. Deputy Surveyor, originally established this corner position while subdividing Township 141 North, Range 30 West. The notes indicate a wood post was set to mark the corner position and the following witnesses: a 10 inch Birch North 27 degrees East a distance of 26 links; and a 9 inch Yellow Pine South 41 degrees West a distance of 44 links.

1926 County Surveyor's Record Book 133 pages 103-115 show survey by John Greene; a 12 inch Norway Pine North 51 degrees West a distance of 145.7 feet; and a 9 inch Jack Pine North 53 degrees East a distance of 131.5 feet; and boulder South 46 degrees East a distance of 35.7 feet.

1939 Civilian Conservation Corps set post for approximate corner.

1964 U.S. Forest Service technician Ekstrom searched for the corner but found no evidence.

1986 U.S. Forest Service crews set an aerial target in the vicinity of this corner for the search and establishment of the true corner position. The target having coordinate values through the use of GPS on the Chippewa South Boundary Project Cadastral Survey U.S. Project Number 53-6392-8-219. This target allowed for the search and location of this corner.

1988 on September 21 a Landecker-Stevenson & Associates crew searched for the corner. The following information was found and noted: no evidence of rock or Pine with scribes from the 1926 County survey and no evidence found of the original accessories.

1988 on October 12 a Landecker-Stevenson & Associates crew set a 2 inch by 54 inch iron pipe with brass cap, plastic base and magnet at proportional position between the Northwest and Northeast Corners of Section 33. New bearing trees were marked as shown and steel sign post is in place as noted on front of this certificate.