

CERTIFICATE OF LOCATION OF GOVERNMENT CORNER

East Quarter _____ Corner of Section 25, Township 141 N, Range 30 W, 5th P.M.

STATE OF MINNESOTA, County of Cass

At the corner location shown on the sketch: Latitude: 47° 00' 04.928"
Longitude: 94° 24' 25.200"

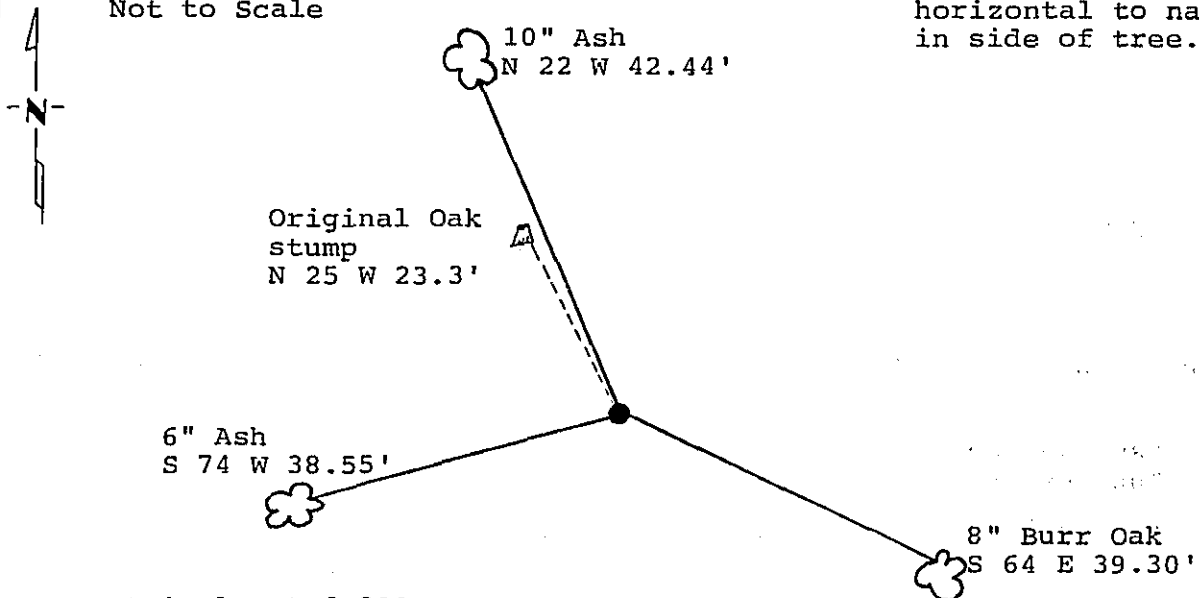
On 5/18/88 found an original bearing tree stump and rotted,
DATE
squared post.

left monument as found, lowered monument, removed monument (explain)

On 6/6/88 placed a 2 inch by 48 inch iron pipe with stamped
DATE
brass cap, plastic base and magnet.

Magnetic Decl: 5° East SKETCH OF REFERENCE TIES
Not to Scale

All distances are horizontal to nail in side of tree.



Monument is located 200 feet North of North Country Trail.
8' steel sign post South 2.85' with sign 54-9.

All trees are painted with red enamel and marked with a 54-3 (Bearing Tree) tag.

Monument Stamped
T 141 N
R30W R29W
S25 $\frac{1}{4}$ S30
1988
RLS 17008

Statement of evidence relative to this corner location is on back of page.

310873

I hereby certify that this survey, plan or report was prepared by me or under my direct supervision and that I am a duly Registered Land Surveyor under the laws of the State of Minnesota.

David S. Landecker
David S. Landecker

Date 3/10/89 Registration No. 17008

OFFICE OF THE COUNTY RECORDER

County of Cass

I hereby certify that this document was filed in the Co. Recorders office at 2:40 P. M. on the 14 day of March A.D., 1989

County Recorder Clouline Kayler
By MS, Deputy

DOCUMENT NO. 310873

Statement of Evidence:

East Quarter Corner Section 25, Township 141
North, Range 30 West, Cass County, Minnesota

T-25 141-30
Bk.4 Pg.7

1873 P. H. Conger, U.S. Deputy Surveyor, originally established this corner position while running the east line of Township 141 North, Range 30 West. The notes indicate a wood post was set to mark the corner position and the following witnesses: an 8 inch White Oak North 19 degrees West a distance of 36 links (23.76 feet); and a 7 inch Birch North 80 degrees East a distance of 7 links.

1988 on May 18 a Landecker-Stevenson & Associates crew searched for the corner. The following information was found and noted: remains of the original rotted, squared survey post set by Conger. Lying 3 inches under surface, 1.5 feet of squared post going into ground with point, remains of 18 inch rotted Oak stump North 25 degrees West a distance of 23.3 feet with axe mark, no blaze.

1988 on June 28 a Landecker-Stevenson & Associates crew set a 2 inch by 48 inch iron pipe with stamped brass cap, plastic base and magnet inplace of the original found post. New bearing trees were marked as shown and steel sign post set as noted on front of this certificate.