

CERTIFICATE OF LOCATION OF GOVERNMENT CORNER

North Quarter _____ Corner of Section 26, Township 141 N, Range 30 W, 5th P.M.

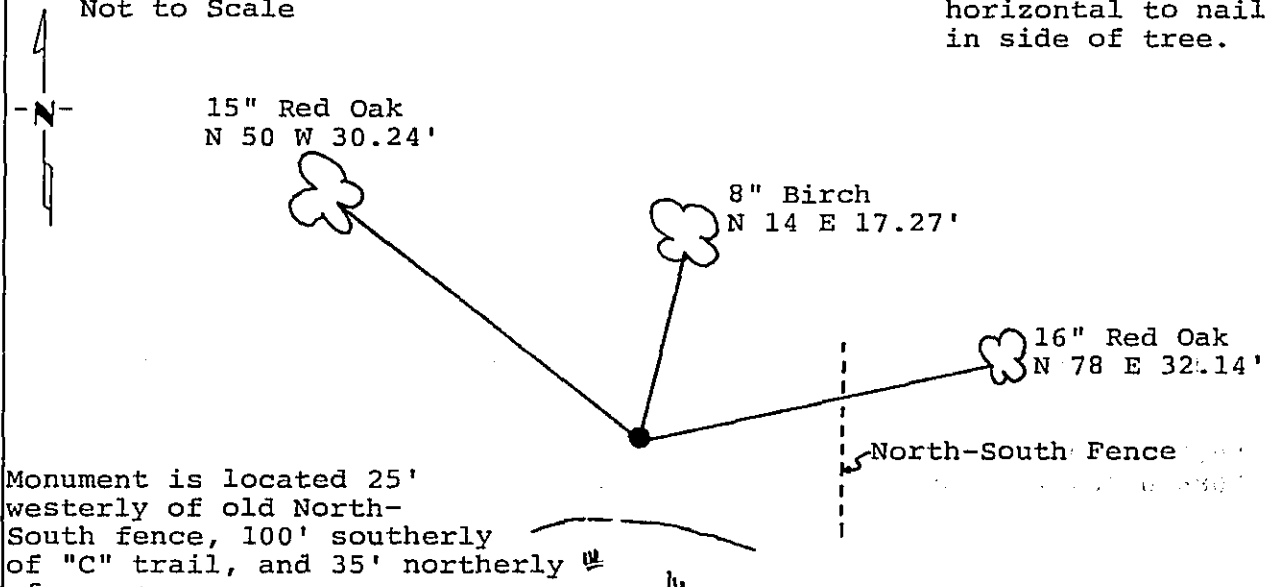
STATE OF MINNESOTA, County of Cass

At the corner location shown on the sketch: Latitude: 47°00'30.489"
 Longitude: 94°26'20.680"

- On _____ found a _____
DATE
- left monument as found, lowered monument, removed monument (explain)
- On 1/31/89 placed a 2 inch by 48 inch iron pipe with brass cap,
DATE plastic base and magnet.

Magnetic Decl: 5° East SKETCH OF REFERENCE TIES
 Not to Scale

All distances are horizontal to nail in side of tree.



Monument is located 25' westerly of old North-South fence, 100' southerly of "C" trail, and 35' northerly of swamp.
 8' steel sign post North 5.0'

Monument Stamped
 T141N R30W
S23
S26
 1989
 RLS 17008

All trees are painted with red enamel and marked with a 54-3 (Bearing Tree) tag.

Statement of evidence relative to this corner location is on back of page. 310865

I hereby certify that this survey, plan or report was prepared by me or under my direct supervision and that I am a duly Registered Land Surveyor under the laws of the State of Minnesota.

David S. Landecker
 David S. Landecker
 Date 3/10/89 Registration No. 17008

OFFICE OF THE COUNTY RECORDER
 County of Cass

I hereby certify that this document was filed in the Co. Recorders office at 1:50 P.M. on the 14 day of March A.D., 1989
 County Recorder Clouline Kaylor
 By ms, Deputy
 DOCUMENT NO. 310865

Statement of Evidence:

North Quarter Corner Section 26, Township 141
North, Range 30 West, Cass County, Minnesota

R-19 141-30
Bk.5 Pg.49

1873 P. H. Conger, U.S. Deputy Surveyor, originally established this corner position while subdividing Township 141 North, Range 30 West. The notes indicate a wood post was set to mark the corner position and the following witnesses: a 10 inch Poplar South 42 degrees West a distance of 66 links; and a 3 inch Poplar North 48 degrees East a distance of 23 links.

1965 U.S. Forest Service records show the following: technician Ekstrom found the corner monumented with a mound of stone and fence running North-South. No evidence of post or bearing trees.

1986 U.S. Forest Service crews set an aerial target in the vicinity of this corner for the search and establishment of the true corner position. The target having coordinate values through the use of GPS on the Chippewa South Boundary Project Cadastral Survey U.S. Project Number 53-6392-8-219. This target allowed for the search and location of this corner.

1988 on August 17 a Landecker-Stevenson & Associates crew searched for the corner. The following information was found and noted: old North-South fence. No evidence of original Poplar bearing trees or post.

1989 on January 31 a Landecker-Stevenson & Associates crew set a 2 inch by 48 inch iron pipe with brass cap and plastic base with magnet at the lost, single proportion position between the Northeast corner of Section 26 and the Meander corner on the east side of Hovde Lake. The north line of Section 26 was determined on a mean bearing between the north line of Section 23 and the south line of Section 26. New bearing trees were marked as shown and a steel sign post set as noted on front of this certificate.