

CERTIFICATE OF LOCATION OF GOVERNMENT CORNER

CLOSING CORNER ON

RESERVATION LINE _____ Corner of Section 28, Township 141 N, Range 29 W, 5th P.M.

STATE OF MINNESOTA, County of CASS

At the corner location shown on the sketch:

Latitude: 47° 00' 33.446"

Longitude: 94° 20' 59.092"

On 6/10/88 found a 1" iron monument with a brass cap
DATE

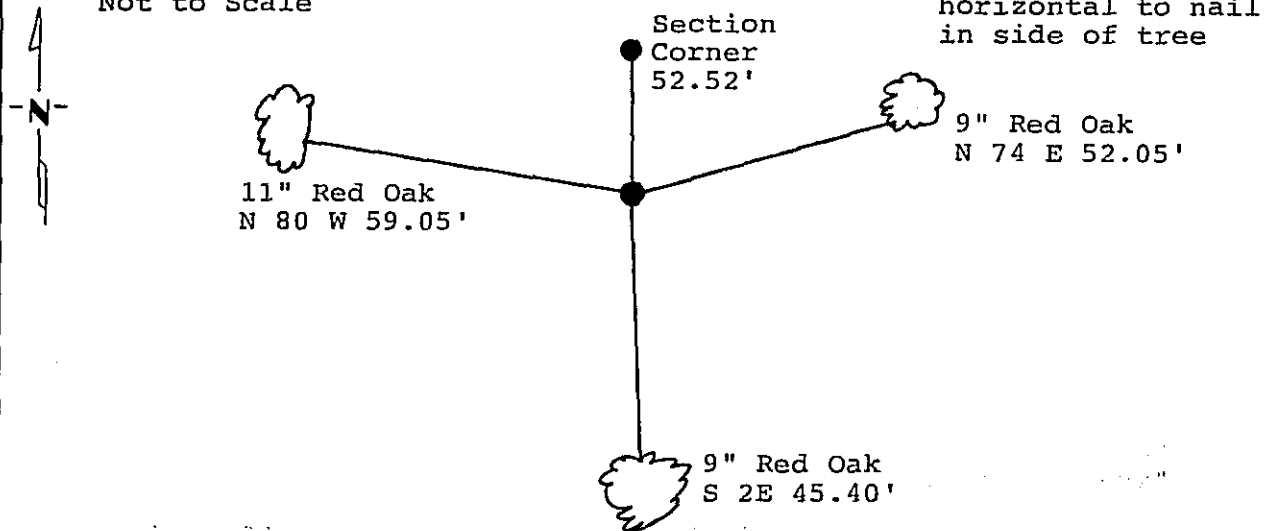
left monument as found, lowered monument, removed monument (explain)

On _____ placed a _____
DATE

Magnetic Decl: 5° East
Not to Scale

SKETCH OF REFERENCE TIES

All distances are horizontal to nail in side of tree



Monument is located
52.52' south of NE
corner of Section 28,
clearcut southwesterly,
line to standard easterly.
6' sign post north 81 west 6.0'
8' sign post south 81 east 4.1'

Monument Stamped

T 141 N R 29 W

S 28 S 27

1918

All trees are painted with red enamel and marked with a 54-3 (Bearing Tree) tag.

Statement of evidence relative to this corner location is on back of page.

310674

I hereby certify that this survey, plan or report was prepared by me or under my direct supervision and that I am a duly Registered Land Surveyor under the laws of the State of Minnesota.

David S. Landecker
David S. Landecker

Date 2/28/89 Registration No. 17008

OFFICE OF THE COUNTY RECORDER

County of Cass

I hereby certify that this document was filed in the Co. Recorders office at 3:00 P. M. on the 1 day of March A.D., 19 89

County Recorder Clouline Kayler

By Ms, Deputy

DOCUMENT NO. 310674

Statement of Evidence: Closing Corner on Reservation Line Sections 27 and 28, Township 141 North, Range 29 West, Cass County, Minnesota

R-S13 141-29
Bk.4 Pg.36

1873 P.H. Conger U.S. Deputy Surveyor, while subdividing Township 141 North, Range 29 West, notes that the South boundary of the Leech Lake Reservation is .80 chains South of the Northeast Corner of Section 28.

1918 U.S. General Land Office dependant resurvey reestablished this corner proportionally as noted in the original survey between the Northeast and Southeast corners of Section 28. An iron pipe with a marked brass cap was set to mark the corner. The following bearing trees were marked: a 5 inch Red Oak North 10 degrees West a distance of 50 links; and a 5 inch Poplar South 83 degrees East a distance of 53 links.

1965 U.S. Forest Service records show the following: personnel found brass cap monument and 1918 Northwest Oak bearing tree. Set a 6 foot sign post North 80 degrees West a distance of 6.2 feet. New bearing trees marked: an 11 inch Oak North 10 degrees West a distance of 33.0 feet (rescribed); and a 7 inch Oak North 81 degrees West a distance of 23.8 feet.

1968 U.S. Forest Service Surveyor Bill Okerman filed corner certificate using 1965 information.

1986 U.S. Forest Service crews set an aerial target over this corner position for determination of coordinate values through the use of GPS on the Chippewa South Boundary Project Cadastral Survey U.S. Project Number 53-6392-8-219. This target allowed for the search and location of this corner.

1988 on June 10 a Landecker-Stevenson & Associates crew visited the corner and found the following evidence: brass cap monument in good condition with rocks around, 1918 bearing tree North 10 degrees West a distance of 33 feet is cut off; 1965 bearing tree North 81 degrees West a distance of 23.8 feet is cut off. New bearing trees were marked and steel sign posts in place as shown on front of this certificate.