

# CERTIFICATE OF LOCATION OF GOVERNMENT CORNER

MEANDER Corner of Section 18/19, Township 141 N, Range 29 W, 5th P.M.

STATE OF MINNESOTA, County of CASS

At the corner location shown on the sketch: Latitude: 47° 01' 21.999"  
 Longitude: 94° 23' 23.131"

On 6/30/88 found a 1" iron monument with a brass cap  
DATE

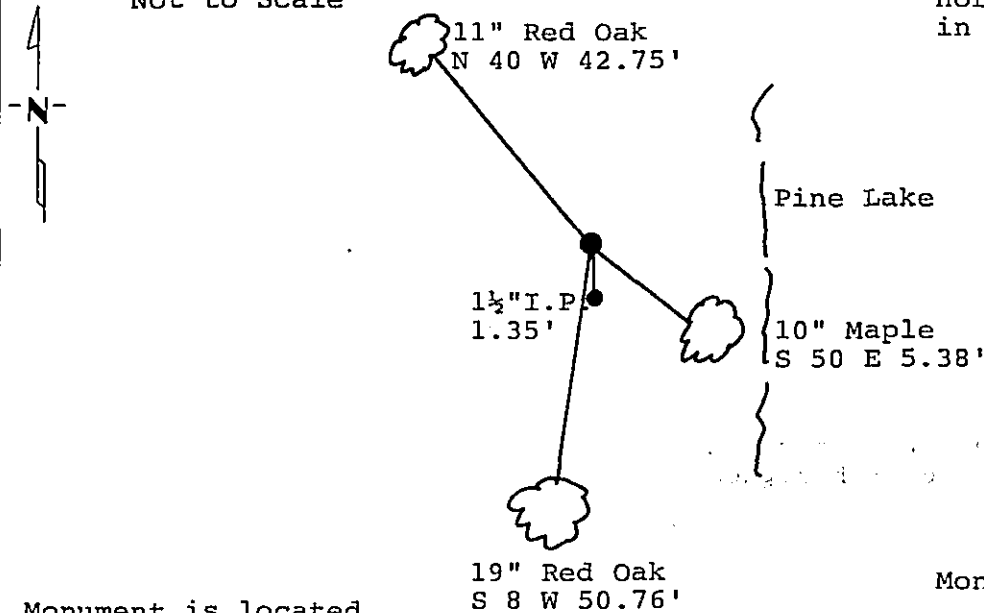
left monument as found,  lowered monument,  removed monument (explain)

On \_\_\_\_\_ placed a \_\_\_\_\_  
DATE

Magnetic Decl: 5° East  
 Not to Scale

### SKETCH OF REFERENCE TIES

All distances are horizontal to nail in side of tree.



Monument is located  
 10' more or less  
 westerly of waters  
 edge of Pine Lake  
 8' steel sign post West 3.0'

Monument Stamped

T 141 N  
S 18  
S 19 MC  
 R 29 W

All trees are painted with red enamel and marked with a 54-3 (Bearing Tree) tag.

1918

Statement of evidence relative to this corner location is on back of page.

310038

I hereby certify that this survey, plan or report was prepared by me or under my direct supervision and that I am a duly Registered Land Surveyor under the laws of the State of Minnesota.

David S. Landecker  
 David S. Landecker

Date 1-18-89 Registration No. 17008

### OFFICE OF THE COUNTY RECORDER

County of Cass

I hereby certify that this document was filed in the Co. Recorders office at 2:30 A. .M. on the 25 day of January A.D., 1989

County Recorder Clairice Keyler

By MJ, Deputy

DOCUMENT NO. 310038

Statement of Evidence:

Meander Corner Section 19, Township 141 North,  
Range 29 West, Cass County, Minnesota

N 4-5 141-29  
Bk.4 Pg.17

1873 P.H. Conger, U.S. Deputy Surveyor, originally surveyed Sections 17, 18, 19 and 20 while subdividing Township 141 North, Range 29 West. His notes indicated a different mathematical position for Pine Lake than actually exists. No meander corner was set at this location.

1918 U.S. General Land Office dependent resurvey established this corner while resurveying Sections 17 and 18 said township. This survey also meandered Pine Lake and noted the lake in its proper location in their records. A 1 by 36 inch iron pipe with brass cap was set to mark the corner. The following bearing trees were marked: a 12 inch Poplar North 26 degrees West a distance of 56 links; and a 10 inch Poplar South 83 degrees 15 minutes West a distance of 26 links.

1917 John Curo's Book 56 page 77 show survey by John Curo. He set a 2 by 48 inch iron monument in mound in seawall.

1988 on June 30 a Landecker-Stevenson & Associates crew visited the corner and found the following evidence: 1918 General Land Office monument in good condition up 8 inches and Curo 1 and 1/2 inch iron pipe southerly 1.35 feet. 3 new bearing trees were marked and an 8 foot steel sign post set as shown on front of this certificate, accepting and witnessing the 1918 General Land Office monument.