

CERTIFICATE OF LOCATION OF GOVERNMENT CORNER

NORTHEAST Corner of Section 21, Township 141N, Range 30W, 5th P.M.

STATE OF MINNESOTA, County of CASS

Latitude: 47° 01' 23.3323"

At the corner location shown on the sketch:

Longitude: 94° 28' 14.95135"

On 6-27-88 found a Concrete monument with brass tablet

DATE

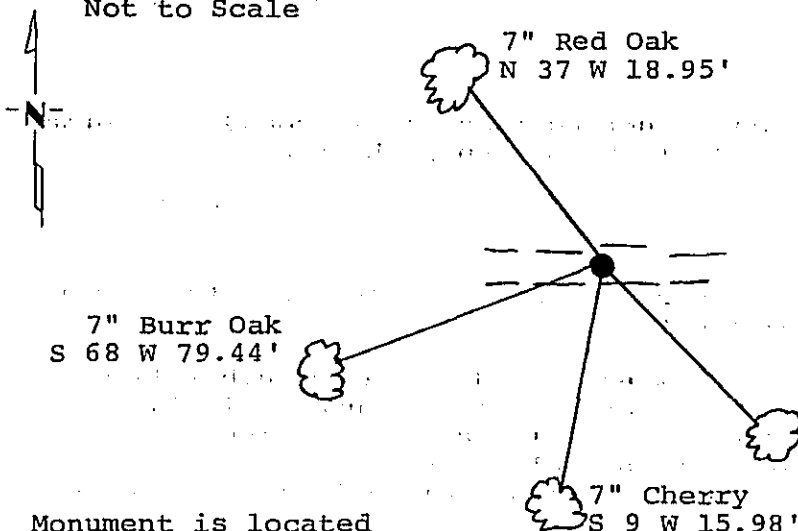
left monument as found, lowered monument, removed monument (explain)

On _____ placed a _____

DATE

Magnetic Decl: 5° East SKETCH OF REFERENCE TIES
Not to Scale

All distances are horizontal to nail in side of tree.



Monument is located in north side of south wheel rut in Forest Service trail #3735.
Sign post south 5.0'
Sign post north 16.5'

Monument Stamped

T 141 N R 30 W

S 16	S 15
------	------

S 21	S 22
------	------

1978

R.L.S. No. 12261

All trees are painted with red enamel and marked with a 54-3 (Bearing Tree) tag.

Statement of evidence relative to this corner location is on back of page.

309842

I hereby certify that this survey, plan or report was prepared by me or under my direct supervision and that I am a duly Registered Land Surveyor under the laws of the State of Minnesota.

David S. Landecker

David S. Landecker

Date 12-15-88 Registration No. 17008

OFFICE OF THE COUNTY RECORDER
County of Pearce

I hereby certify that this document was filed in the Co. Recorders office at 10:25 A.M. on the 12 day of January A.D., 19 89

County Recorder Clonidine Keyler

By ms, Deputy

DOCUMENT NO. 309842

1873 P. H. Conger, U.S. Deputy Surveyor, originally established this corner position while subdividing Township 141 North, Range 30 West. The notes indicate a wood post was set to mark the corner position and the following witnesses: a 20 inch Yellow Pine North 26 degrees East a distance of 33 links; a 12 inch White Pine North 64 degrees West a distance of 45 links; a 16 inch White Pine South 18 degrees West a distance of 49 links; and a 18 inch Yellow Pine South 47 and 1/2 degrees East a distance of 104 links.

1914 County Surveyor's Record Book B pages 516-520 show survey by James Middleton and the following evidence: wood stake set from old Government bearing trees: a 20 inch Yellow Pine stump North 26 degrees East a distance of 33 links; and a 12 inch White Pine stump North 64 degrees West a distance of 45 links.

1917 U.S. General Land Office dependant resurvey found the corner marked by wood stake and all four Government bearing tree stumps.

1935 Civilian Conservation Corps found 2 scribed bearing tree stumps.

1964 U.S. Forest Service technician Ekstrom found County bearing trees, but no corner was found.

1978 U.S. Forest Service Registered Land Surveyor Number 12261 set a 6 inch by 6 inch by 24 inch concrete monument with a marked brass cap in woods trail 6 inches below surface, signpost 16.5 feet North with sign 54-4 and the following witnesses: a 6 inch Red Oak North 33 degrees East a distance of 71.72 feet; a 8 inch Red Oak South 43 degrees East a distance of 12.61 feet; a 6 inch White Oak South 68 degrees West a distance of 79.48 feet; and a 6 inch Red Oak North 53 degrees West a distance of 18.92 feet.

1986 U.S. Forest Service crews set an aerial target in the vicinity of this corner for the search and establishment of the true corner position. The target having coordinate values through the use of GPS on the Chippewa South Boundary Project Cadastral Survey U.S. Project Number 53-6392-8-219. This target allowed for the search and location of this corner.

1988 on June 27 a Landecker-Stevenson & Associates crew visited the corner and found the following evidence: a concrete monument with brass cap down 3 inches in North side of South wheel rut in East-West trail; 1978 bearing trees: Northeast bearing tree now a 4 foot stump; a 10 inch Red Oak South 43 degrees East a distance of 12.62 feet; a 7 inch Burr Oak South 68 degrees West a distance of 79.44 feet; and a 7 inch Red Oak North 37 degrees West a distance of 18.95 feet. New bearing tree: a 7 inch Cherry South 9 degrees West a distance of 15.98 feet; the 8 foot signpost North has tree on top; set 8 foot signpost South 5.0 feet with signs 54-2 and 54-9. The location of this monument fits that of the 1914 County and 1917 U.S. surveys.