

CERTIFICATE OF LOCATION OF GOVERNMENT CORNER

Northeast Corner of Section 20, Township 141 N, Range 30 W, 5th P.M.

STATE OF MINNESOTA, County of Cass

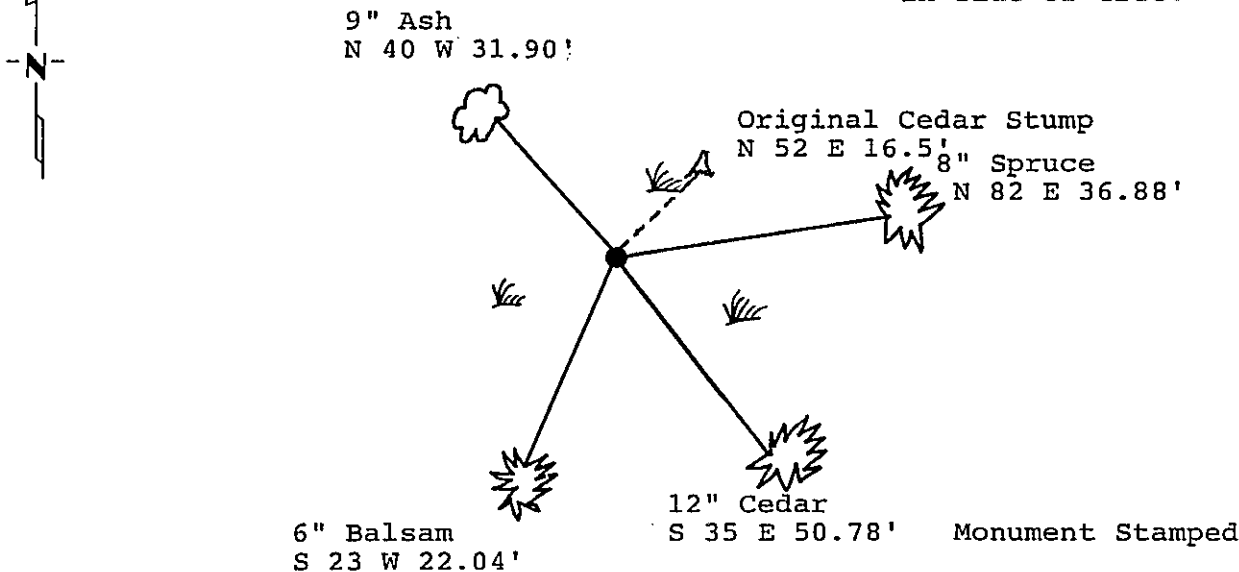
At the corner location shown on the sketch: Latitude: 47° 01'23.66246"
 Longitude: 94° 29'31.75879"

On _____ found a _____
DATE

left monument as found, lowered monument, removed monument (explain)

On 7/21/88 placed a 2 inch by 48 inch iron pipe with a brass cap
DATE

Magnetic Decl: 5° East SKETCH OF REFERENCE TIES All distances are horizontal to nail
 Not to Scale in side of tree.



Monument is located in the Southerly edge of a bog. 8 foot sign post West 5.0 feet.

All trees are painted with red enamel and marked with a 54-3 (Bearing Tree) tag.

T 141 N R 30 W

17	16
20	21
1988	

RLS No. 17008

Statement of evidence relative to this corner location is on back of page. 309841

I hereby certify that this survey, plan or report was prepared by me or under my direct supervision and that I am a duly Registered Land Surveyor under the laws of the State of Minnesota.

David S. Landecker
 David S. Landecker
 Date 12-15-88 Registration No. 17008

OFFICE OF THE COUNTY RECORDER
 County of Cass

I hereby certify that this document was filed in the Co. Recorders office at 10:20 A. A.M. on the 12 day of January A.D., 1989

County Recorder Blondine Kayler
 By ms, Deputy

DOCUMENT NO. 309841

Statement of Evidence: Northeast Corner Section 20, Township 141 North,
Range 30 West, Cass County, Minnesota

N-9 141-30
Bk.5 Pg.2

1873 P. H. Conger, U.S. Deputy Surveyor, originally established this corner position while subdividing Township 141 North, Range 30 West. The notes indicate a wood post was set to mark the corner position and the following witnesses: a 10 inch Cedar North 52 degrees East a distance of 25 links; a 9 inch Birch North 51 degrees West a distance of 37 links; a 6 inch Birch South 5 and 1/2 degrees West a distance of 31 links; and a 6 inch Spruce South 22 degrees East a distance of 30 links.

1914 County Surveyor's Record Book B pages 516-520 show survey by James Middleton. He found the corner monumented with a wood stake set for corner from old Government bearing trees. The following bearing trees were found: a 10 inch Cedar North 52 degrees East a distance of 24 links; a 9 inch Birch North 58 degrees West a distance of 37 links; a 6 inch Birch South 5 and 1/2 degrees West a distance of 31 links; and a 8 inch Spruce South 22 degrees East a distance of 30 links.

1917 U.S. General Land Office dependant resurvey found the corner marked by wood stake. The following bearing trees were found: the Northeast and Northwest original bearing trees.

1986 U.S. Forest Service crews set an aerial target in the vicinity of this corner for the search and establishment of the true corner position. The target having coordinate values through the use of GPS on the Chippewa South Boundary Project Cadastral Survey U.S. Project Number 53-6392-8-219. This target allowed for the search and location of this corner.

1988 on July 14 and 15 a Landecker-Stevenson & Associates crew searched for the corner from target Number 47, a 10 inch Cedar stump was found badly decayed near the Government bearing and distance from the computed corner position, it was determined that the stump was the original bearing tree. The corner position determined from this stump fits well with the mathematical locations as noted in 1914 County and 1917 U.S. surveys referenced above.

1988 on July 21 a Landecker-Stevenson & Associates crew set a 2 inch by 48 inch iron pipe with a brass cap from ties of Cedar stump found. 4 new bearing trees are shown on front of this certificate and sign post is in place as shown.