

# CERTIFICATE OF LOCATION OF GOVERNMENT CORNER

East Quarter \_\_\_\_\_ Corner of Section 16, Township 141 N, Range 30 W, 5th P.M.

STATE OF MINNESOTA, County of Cass

At the corner location shown on the sketch: Latitude: 47° 01'49.57047"  
 Longitude: 94° 28'14.82929"

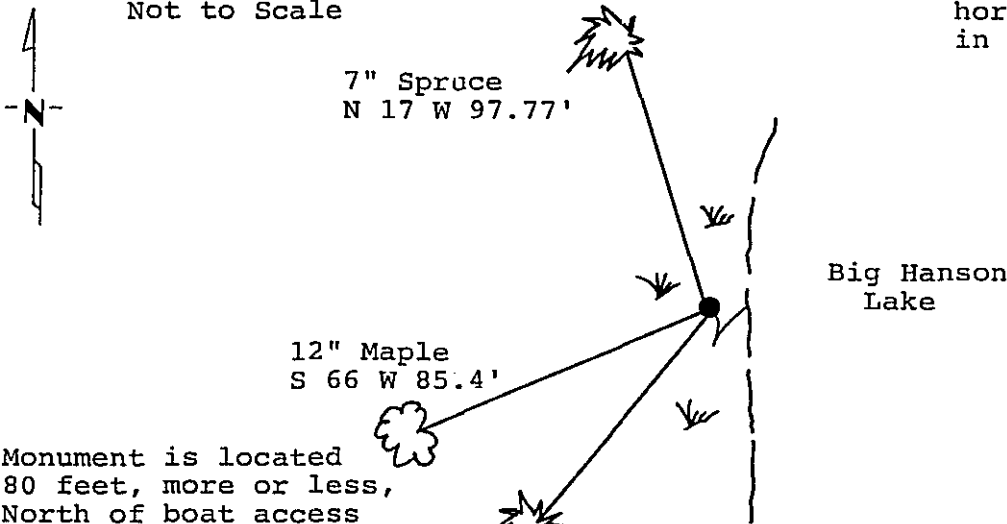
On 7/15/88 found a 1 inch Iron Monument with a Brass Cap.  
DATE

left monument as found,  lowered monument,  removed monument (explain)

On \_\_\_\_\_ placed a \_\_\_\_\_  
DATE

Magnetic Decl: 5° East SKETCH OF REFERENCE TIES  
 Not to Scale

All distances are horizontal to nail in side of tree.



Monument is located 80 feet, more or less, North of boat access to Big Hanson Lake. Set a 8 foot sign post on Northwest side of monument to stabilize. 6 foot sign post West 7.0 feet. 8 foot sign post North 5.0 feet.

Monument Stamped

$\frac{1}{4}$   
 S 16 | S 15  
 1917

All trees are painted with red enamel and marked with a 54-3 (Bearing Tree) tag.

Statement of evidence relative to this corner location is on back of page. 309839

I hereby certify that this survey, plan or report was prepared by me or under my direct supervision and that I am a duly Registered Land Surveyor under the laws of the State of Minnesota.

David S. Landecker  
 David S. Landecker

Date 12-15-88 Registration No. 17008

OFFICE OF THE COUNTY RECORDER  
 County of Cass

I hereby certify that this document was filed in the Co. Recorders office at 10:10 A.M. on the 12 day of January, A.D., 1989

County Recorder Claudine Koyh  
 By m, Deputy

DOCUMENT NO. 309839

Statement of Evidence:

East Quarter Section 16, Township 141 North,  
Range 30 West, Cass County, Minnesota

L-13 141-30  
Bk.5 Pg.1

1873 P. H. Conger, U.S. Deputy Surveyor, originally established this corner position while subdividing Township 141 North, Range 30 West. The notes indicate a wood post was set to mark the corner position and the following witnesses: a 4 inch Tamarack South 40 degrees East a distance of 9 links; and a 3 inch Tamarack North 30 degrees East a distance of 8 links.

1917 U.S. General Land Office dependent resurvey reestablished this corner proportionally. A 1 inch by 36 inch iron pipe with a marked brass cap was set to mark the corner. The following bearing trees were marked: a 5 inch Cedar North 15 and 1/2 degrees a distance of 88 links; and a 5 inch Poplar South 57 and 3/4 degrees West a distance of 23 links.

1964 U.S. Forest Service surveyor Bill Okerman found the corner monumented with a brass cap. The following bearing trees were found: 1917 bearing trees; cedar now a decayed stump and no evidence of poplar. 3 new bearing trees were marked: a 10 inch Ash North 13 degrees East a distance of 21.7 feet, a 5 inch Ash South 34 degrees East a distance of 5.6 feet, a 15 inch Jack Pine South 86 degrees West a distance of 109.9 feet; and a sign post set West a distance of 7.2 feet.

1969 U.S. Forest Service Surveyor Bill Okerman filed corner certificate using 1964 information.

1986 U.S. Forest Service crews set an aerial target in the vicinity of this corner for the search and establishment of the true corner position. The target having coordinate values through the use of GPS on the Chippewa South Boundary Project Cadastral Survey U.S. Project Number 53-6392-8-219. This target allowed for the search and location of this corner.

1988 on July 15 a Landecker-Stevenson & Associates crew searched for the corner from target Number 60. The following information was found: General Land Office brass cap monument 12 feet, more or less, West of the west edge of Big Hanson Lake, 80 feet, more or less, North of boat access to lake, Two Ash bearing trees cut down by beaver and no evidence of Jack Pine at bearing and distance.

1988 on July 21 a Landecker-Stevenson & Associates crew set a 8 foot signpost on the Northwest side of monument to stabilize monument and wired it to post. A 6 foot signpost West 7.0 feet, and set 8 foot signpost North 5.0 feet. 3 bearing trees are shown on front of this certificate.