

CERTIFICATE OF LOCATION OF GOVERNMENT CORNER

North Quarter Corner of Section 16, Township 134 N., Range 31 W., 5th P.M.

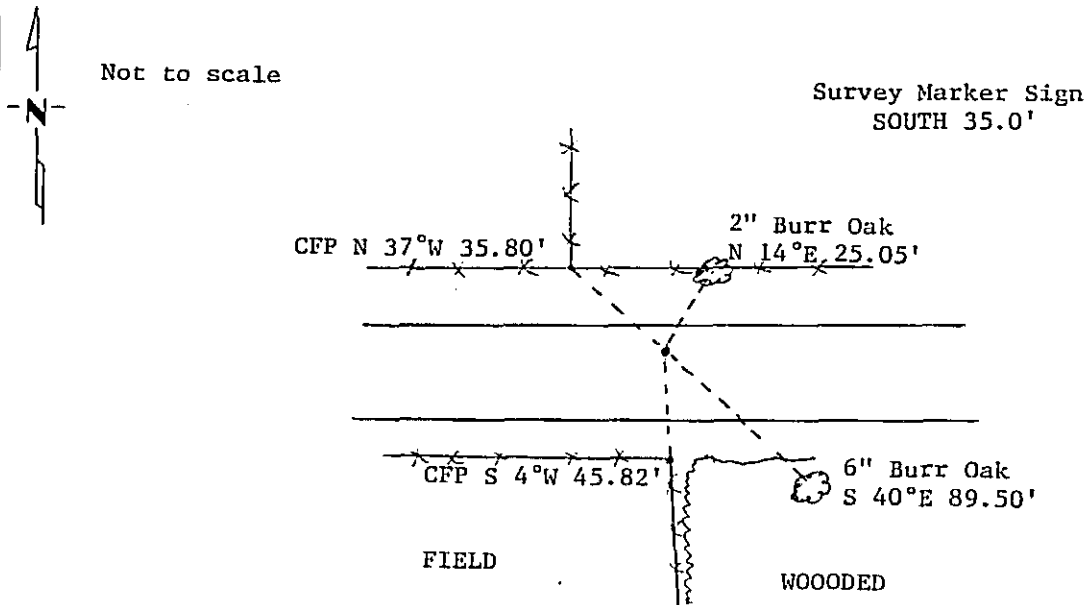
STATE OF MINNESOTA, County of CASS

At the corner location shown on the sketch:

On 10/30/85 found a 2" I.P. with top twisted and split, 6' N. of centerline
DATE
 lowered monument 6" on 10/23/86
 left monument as found, lowered monument, removed monument (explain)

On _____ placed a _____
DATE

SKETCH OF REFERENCE TIES



Statement of evidence relative to this corner location is on back of page. 309796

I hereby certify that this document and the data contained herein was prepared by me or under my direct supervision.

Walter E. Lewis 1-9-89
SIGNATURE DATE

Registration No. 11395

Land Surveyor, Professional Engineer

County Surveyor, County Engineer

OFFICE OF THE COUNTY RECORDER

County of Pearl

I hereby certify that this document was filed in the Co. Recorders office at 4:15 P. M. on the 9 day of January A.D., 1989

County Recorder Clouline Kuyh

By ms, Deputy

DOCUMENT NO. 309796

Statement of Evidence: North Quarter Corner Section 16, T.134 N., R.31 W., 5th P.M.

- 1869 US General Land Office survey set a wood post for this corner and marked the following bearing trees: 16" Aspen N 13 E 8 lks, 6" Aspen S 27 E 17 lks.
- 1915 County Survey Record Book "B", pages 490-495, show a survey by N.D. Gorman. He set an I.M. proportionally.
- 1985 On Oct. 30, Terry Freeman, Cass County Survey Technician found a 2" I.P. with top split and twisted, down 0.2'. Placed Survey Marker Sign SOUTH 35.0'
- 1986 On Oct. 23, monument was lowered 6" and new bearings marked as shown on front of this certificate.