

CERTIFICATE OF LOCATION OF GOVERNMENT CORNER

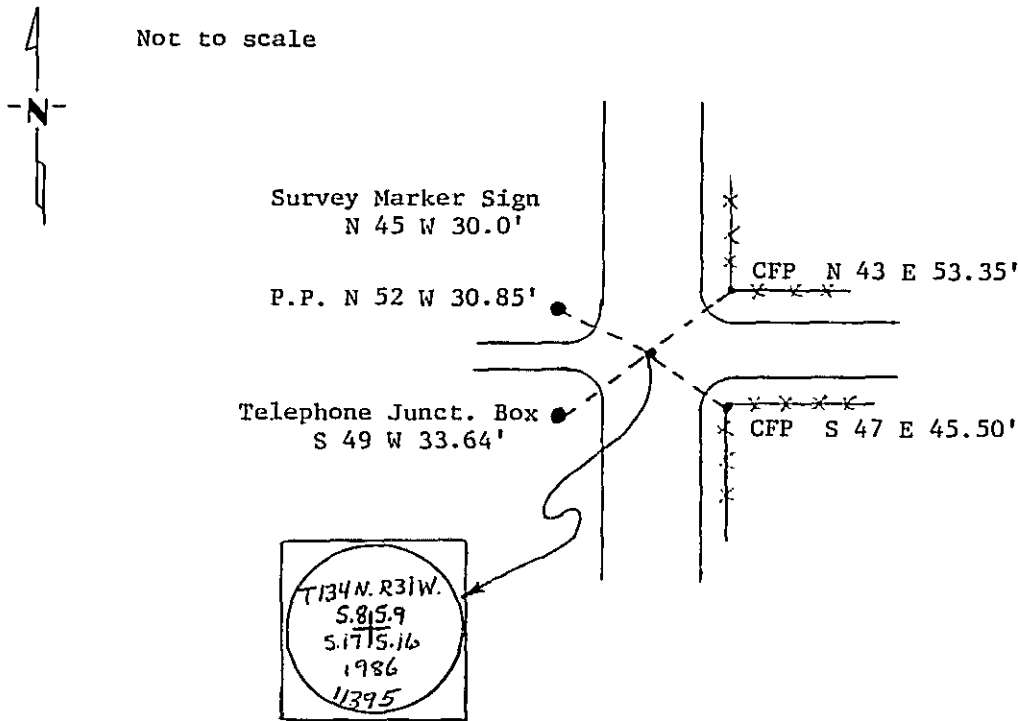
Northeast Corner of Section 17, Township 134 N., Range 31 W., 5th P.M.

STATE OF MINNESOTA, County of CASS

At the corner location shown on the sketch:

- On _____ found a _____
DATE
- left monument as found, lowered monument, removed monument (explain)
- On 10/23/86 placed a 2"x18" telespar monument with stamped aluminum cap
DATE
down 10" in intersection of roads N-S-E and trail W.

SKETCH OF REFERENCE TIES



Statement of evidence relative to this corner location is on back of page. 309795

I hereby certify that this document and the data contained herein was prepared by me or under my direct supervision.

Walter P. Cress 1-9-89
SIGNATURE DATE

Registration No. 11395

- Land Surveyor, Professional Engineer
- County Surveyor, County Engineer

OFFICE OF THE COUNTY RECORDER

County of Cass

I hereby certify that this document was filed in the Co. Recorders office at 4:10 P. M. on the 9 day of January A.D., 19 89

County Recorder Claudine Kayler
By MS, Deputy

DOCUMENT NO. 309795

Statement of Evidence: Northeast Corner Section 17,T.134 N.,R.31 W.,5th P.M.

- 1869 US General Land Office survey set a wood post for this corner and marked the following bearing trees: 8" Birch S 18 W 24 lks., 3" Aspen N 68 W 24 lks.,3" Aspen N 47 E 24 lks.,3" Aspen S63 E 11 lks.
- 1915 County Survey Record Book "B",pages 490-495,show a survey by N.D. Gorman. He set the corner proportionally.
- 1985 On Oct. 30,Terry Freeman,Cass County Survey Technician,searched area of the corner with metal locator in intersection of roads. Found nothing.
- 1986 On May 14,Terry Freeman and Glen Williams,backhoe operator,dug in intersection of roads. Dug 10'E-Wx12'N-Sx2½' deep. 3" top gravel,9" fill and dug 1.5' into natural sandy-clay. Found nothing.
- 1986 Determine that intersection of roads is best available evidence of corner location. On Oct. 23,set 2"x18" telespar monument with stamped aluminum cap in intersection of roads N-S-E and trail W. Mark bearings as shown on front of this certificate