

CERTIFICATE OF LOCATION OF GOVERNMENT CORNER

North Quarter Corner of Section 12, Township 134 N., Range 31 W., 5th P.M.
 STATE OF MINNESOTA, County of CASS

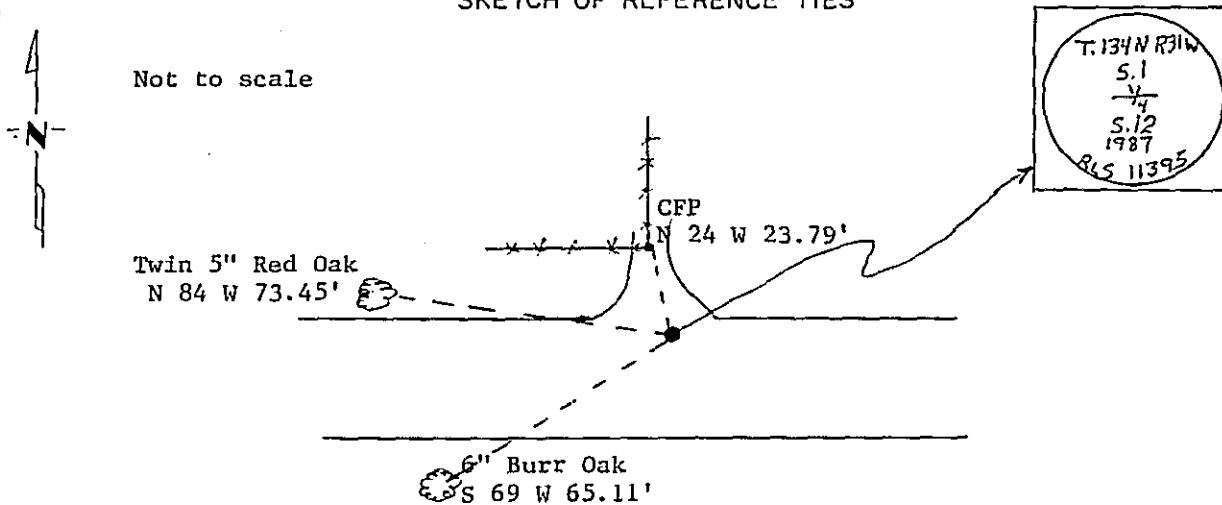
At the corner location shown on the sketch:

On 11/1/85 found a 2" I.P. down 0.1', top 1' bent SW
DATE

left monument as found, lowered monument, removed monument (explain)

On 8/5/87 placed a 2"x18" telespar monument with stamped aluminum cap.
DATE

SKETCH OF REFERENCE TIES



Statement of evidence relative to this corner location is on back of page. 309793

I hereby certify that this document and the data contained herein was prepared by me or under my direct supervision.

Walter E. Brown 1-9-89
SIGNATURE DATE

Registration No. 11395

Land Surveyor, Professional Engineer

County Surveyor, County Engineer

OFFICE OF THE COUNTY RECORDER

County of Cass

I hereby certify that this document was filed in the Co. Recorders office at 4:00 P. .M. on the 9 day of January A.D., 19 89

County Recorder Cherline Kayler

By ms, Deputy

DOCUMENT NO. 309793

Statement of Evidence: North Quarter Corner Section 12, T.134N., R31 W., 5th P.M.

- 1869 US General Land Office survey set a wood post for this corner and marked the following bearing trees: 6" Oak N 50 E 18 lks., 2' Aspen S 20 E 24 lks.
- 1915 County Survey Record Book "C", page 88, shows a survey by E.B. Horst. He set a 3x3x36" wood post proportionally.
- 1916 County Survey Record Book "C", page 91, shows a survey by E.B. Horst. He set an I.M. in place of post.
- 1985 On Nov. 1, Terry Freeman, Cass County Survey Technician, found a 2" I.P. down 0.1' with top 1' bent SW. Lines up with N. edge of E-W road. Survey Marker sign set North 15'
- 1987 On Aug. 5, removed bent pipe and replaced with a 2"x18" telespar monument with stamped aluminum cap. Marked BT's as shown on front of this certificate.