

CERTIFICATE OF LOCATION OF GOVERNMENT CORNER

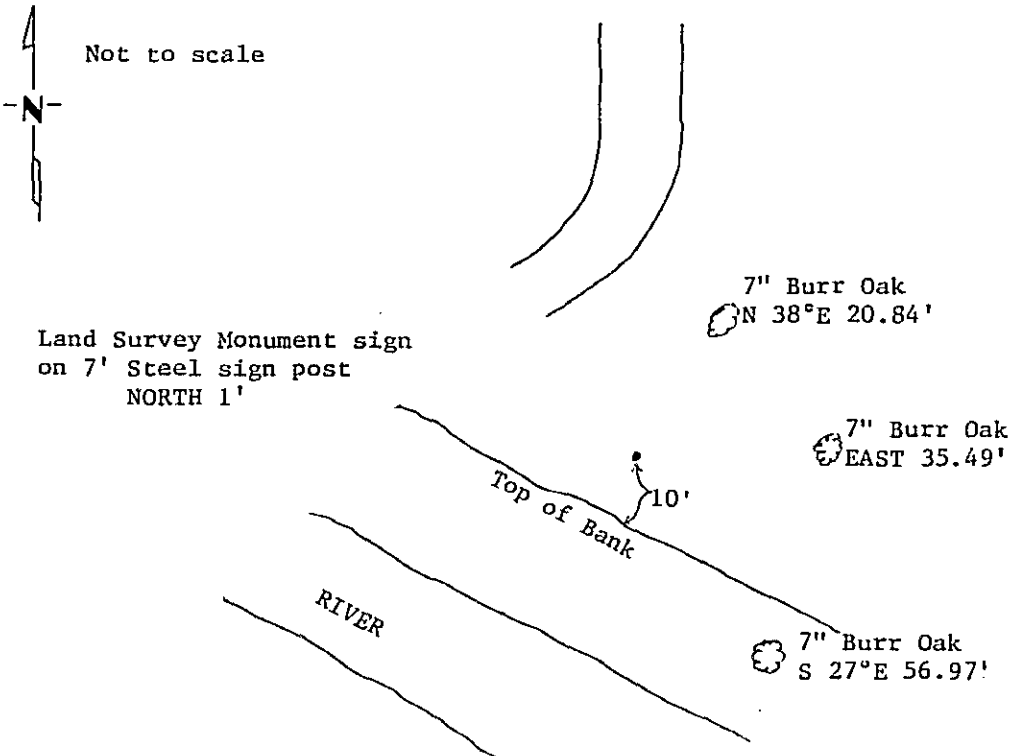
M.C. on E. Line Corner of Section 12, Township 133 N., Range 32 W., 5th P.M.

STATE OF MINNESOTA, County of CASS

At the corner location shown on the sketch:

- On 10/29/85 found a 2" I.P. up 1'
DATE
- left monument as found, lowered monument, removed monument (explain)
- On placed a
DATE

SKETCH OF REFERENCE TIES



Statement of evidence relative to this corner location is on back of page. 309783

I hereby certify that this document and the data contained herein was prepared by me or under my direct supervision.

Walter E. Larsen 1-9-89
SIGNATURE DATE

Registration No. 11395

- Land Surveyor
- County Surveyor

OFFICE OF THE COUNTY RECORDER

County of Cass

I hereby certify that this document was filed in the Co. Recorders office at 3:15 P. .M. on the 9 day of January A.D., 1989

County Recorder Cloudine Keyler

By MS, Deputy

DOCUMENT NO. 309783

Statement of Evidence: Meander Corner on E.Line Section 12,T.133 N.,R.32 W.,5th P.M.

- 1858 US General Land Office survey set a wood post for this corner and marked the following bearing trees: 6" Pine S 50 $\frac{1}{2}$ E 56 lks., 7" Pine N 16 $\frac{3}{4}$ W 60 lks.
- 1985 On Oct. 29, Terry Freeman, Cass County Survey Technician found a 2" I.P. in the area of the meander corner.
- 1987 In Jan., while surveying township roads in 133-31, Comstock & Davis find that the position of the 2" I.P. checks for the meander corner.
- 1987 On Oct. 27, Terry Freeman and Norman Maunu mark new ties as shown on front of this certificate.

Although there is no record of the 2" I.P. being set, the position checks and Comstock & Davis and the Cass County Surveyors Office accept it as a perpetuation of the original corner.