

CERTIFICATE OF LOCATION OF GOVERNMENT CORNER

Center Quarter Corner of Section 21, Township 141 N., Range 28 W., 5th P.M.

STATE OF MINNESOTA, County of CASS

At the corner location shown on the sketch:

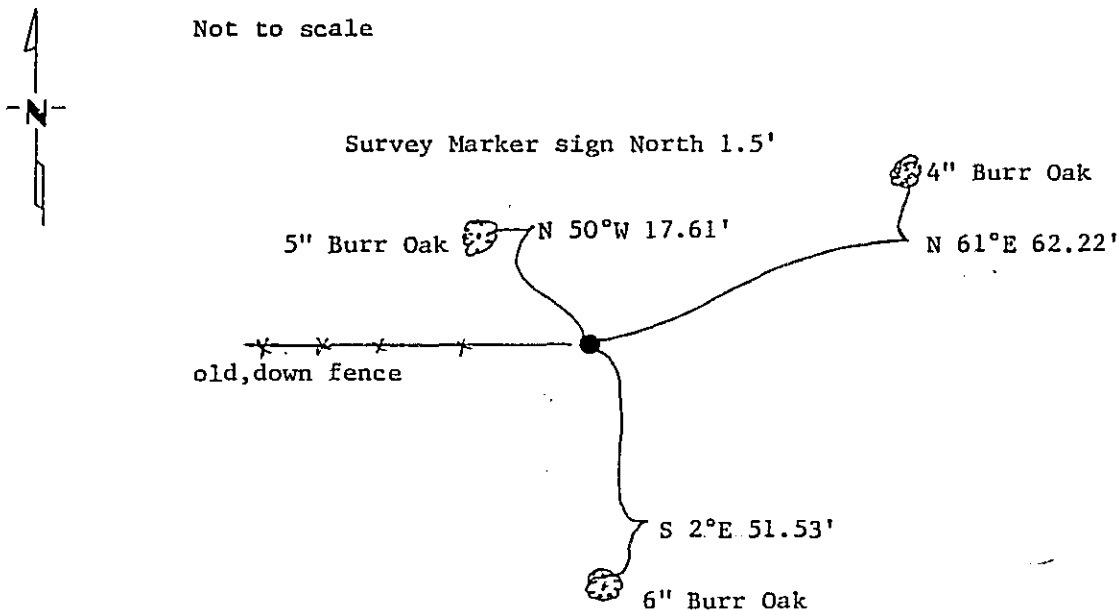
On 3/18/87 found a 1918 GLO brass cap monument
DATE

left monument as found, lowered monument, removed monument (explain)

On _____ placed a _____
DATE

SKETCH OF REFERENCE TIES

Not to scale



Measurements are to nail in side of tree.
 Bearings are assumed using 5° declination.

Statement of evidence relative to this corner location is on back of page. 309682

I hereby certify that this document and the data contained herein was prepared by me or under my direct supervision.

W. H. E. Lewis 1-3-89
SIGNATURE DATE

Registration No. 11395
 Land Surveyor, Professional Engineer
 County Surveyor, County Engineer

OFFICE OF THE COUNTY RECORDER
 County of Pearl

I hereby certify that this document was filed in the Co. Recorders office at 2:40 P.M. on the 3 day of January A.D., 19 89

County Recorder _____
 By Claudia Keyler, Deputy
 DOCUMENT NO. 309682

Statement of Evidence: Center Quarter Corner Section 21, T.141 N., R.28 W., 5th P.M.

- 1918 U.S. General Land Office resurvey established this corner by setting a 1x36" iron pipe with marked brass cap and marked the following bearing trees: 12" Red Oak N 55°E 305 lks., 14" W. Oak N 88½°W 240 lks.
- 1987 County Surveyor Walt Curo and Survey Technician Terry Freeman found the 1918 GLO brass cap monument in good condition in old, down E-W fence. Distance had been previously rough chained to South Quarter Corner.