

CERTIFICATE OF LOCATION OF GOVERNMENT CORNER

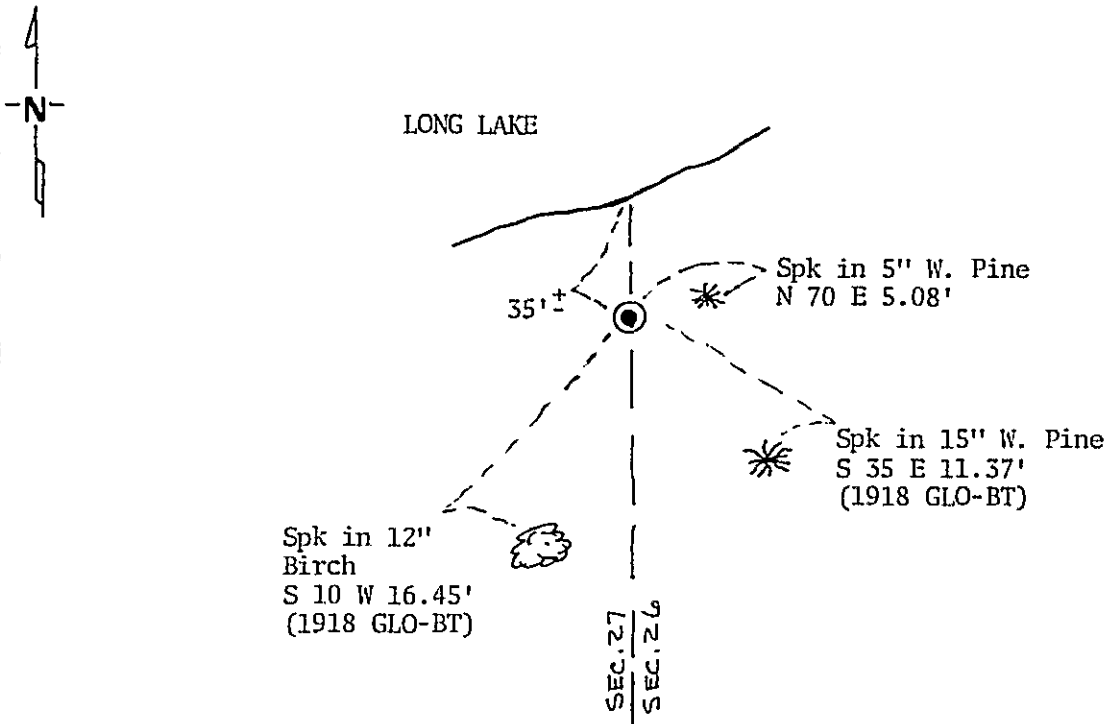
MEANDER NO. 6 Corner of Section 26&27, Township 141, Range 28, 5th P.M.

STATE OF MINNESOTA, County of Cass

At the corner location shown on the sketch:

- On 1-11-85 found a GLO brass cap monument
DATE
- left monument as found, lowered monument, removed monument (explain)
- On _____ placed a _____
DATE

SKETCH OF REFERENCE TIES



BEARINGS ARE APPROXIMATE

Statement of evidence relative to this corner location is on back of page. 303657

I hereby certify that this document and the data contained herein was prepared by me or under my direct supervision.

Amy H. Stearn 3-28-88
SIGNATURE DATE

Registration No. 12684

- Land Surveyor, Professional Engineer
- County Surveyor, County Engineer

OFFICE OF THE REGISTER OF DEEDS

County of Cass

I hereby certify that this document was filed in the Reg. of Deeds office at 4:00 P. .M. on the 12 day of April A.D., 1988

Register of Deeds Cloudiver Kaylor
By ms, Deputy

DOCUMENT NO. 303657

Statement of Evidence:

- 1874 U.S. General Land Office survey set wood post for this corner and marked the following bearing trees: 6" Poplar S 40 E 20 links.
- 1918 U.S. General Land Office dependent resurvey reestablished this corner on line between the southeast and northeast corners of Section 27. No evidence was found of the original corner or bearing tree. A iron pipe with a marked brass cap was set to mark the corner. The following bearing trees were marked: 10" W. Pine S 22½ E 19 links and 6" Birch S 11¼ W 25 links.
- 1966 Field notes of R.F. Schneider, RLS. 5740, show GLO brass cap monument found.
- 1986 County Surveyor's Records in the Recorder's Office were checked and no resurvey information was found on this corner.
- 1985 Found brass cap GLO monument flush in good condition. Both 1918 bearing trees are standing and have blaze scars. Measurements and line north to MC No. 5 and NE corner of Sec. 27 and south to SE corner of Sec. 27 checks well with the 1918 resurvey. Left monument in place and took ties as shown on this certificate.
- 1988 Revisited corner and found conditions the same as in 1985.