

CERTIFICATE OF LOCATION OF GOVERNMENT CORNER

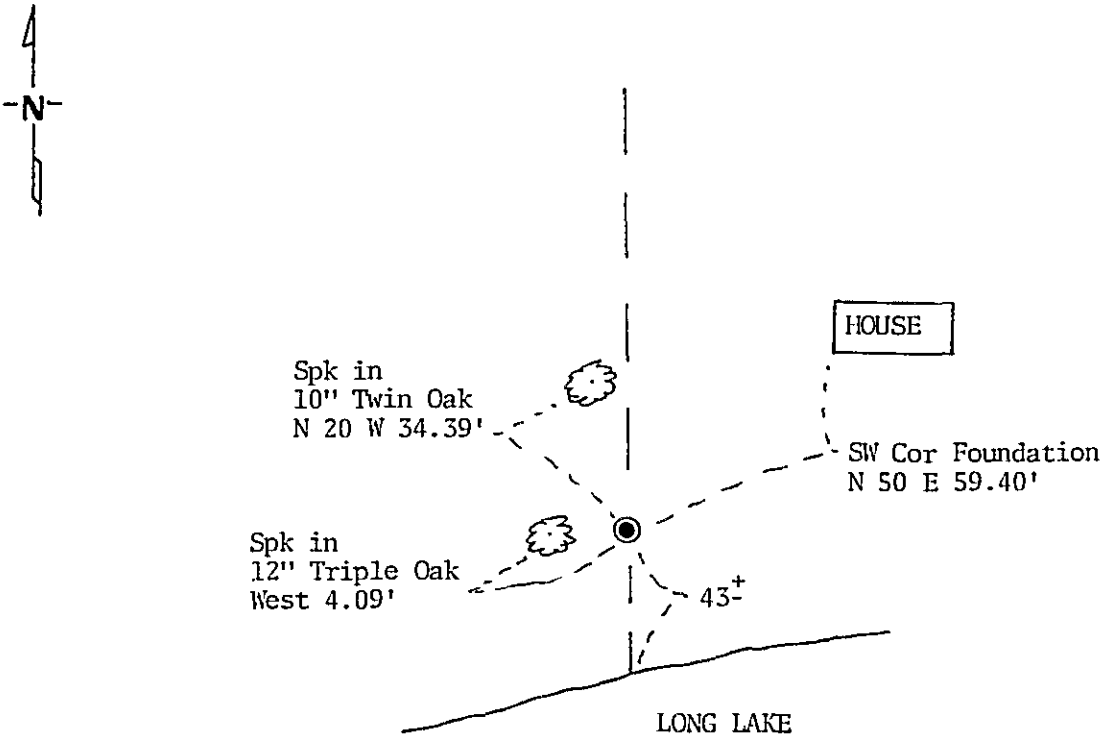
MEANDER NO. 5 Corner of Section 26&27, Township 141, Range 28, 5th P.M.

STATE OF MINNESOTA, County of CASS

At the corner location shown on the sketch:

- On 6-18-86 found a GLO brass cap monument
DATE
- left monument as found, lowered monument, removed monument (explain)
- On _____ placed a _____
DATE

SKETCH OF REFERENCE TIES



BEARINGS ARE APPROXIMATE

Statement of evidence relative to this corner location is on back of page. 303656

I hereby certify that this document and the data contained herein was prepared by me or under my direct supervision.

Gay A. Steven 3/29/88
SIGNATURE DATE

Registration No. 12684

Land Surveyor, Professional Engineer

County Surveyor, County Engineer

OFFICE OF THE REGISTER OF DEEDS
County of Cass

I hereby certify that this document was filed in the Reg. of Deeds office at 3:50 P.M. on the 12 day of April A.D., 19 88

Register of Deeds Clondine Koyler
By MJ, Deputy

DOCUMENT NO. 303656

Statement of Evidence:

- 1874 U.S. General Land Office survey set wood post for this corner and marked the following bearing trees: 20" N. Pine N 7 E 38 links and 20" N. Pine N 15 W 42 links.
- 1918 U.S. General Land Office dependent resurvey reestablished this corner on line between the southeast and northeast corners of Section 27. No evidence was found of the original corner or bearing trees. The following bearing trees were marked: 10" W. Oak N 42 E 312 links and 8" W. Oak N 18¼ W 133 links.
- 1965 Plat of LIKENS NORTH SHORE BEACH was surveyed by John X. Stark. Plat shows this corner marked by a GLO monument. Plat is located in Government Lot 4, Section 26.
- 1986 County Surveyor's Records in the Recorder's Office were checked and no resurvey information was found on this corner.
- 1986 Found GLO iron pipe with marked brass cap in good condition. No evidence of the 1918 NW bearing tree could be found. Construction of a power line has removed this tree. Found an 18" Oak N 42° E 205.4 feet (311 links) that fit the 1918 GLO call for the NE bearing tree. No scar was visible and did not cut open because of the cabin lot. Measured north to northeast corner of Section 27 and south to MC. No. 6 and southeast corner of Section 27. Distances and line check well with 1818 resurvey. Accepted monument as found and took ties as shown on this certificate.