

CERTIFICATE OF LOCATION OF GOVERNMENT CORNER

EAST QUARTER Corner of Section 29, Township 140 N, Range 29 W, 5th P.M.

STATE OF MINNESOTA, County of CASS

At the corner location shown on the sketch:

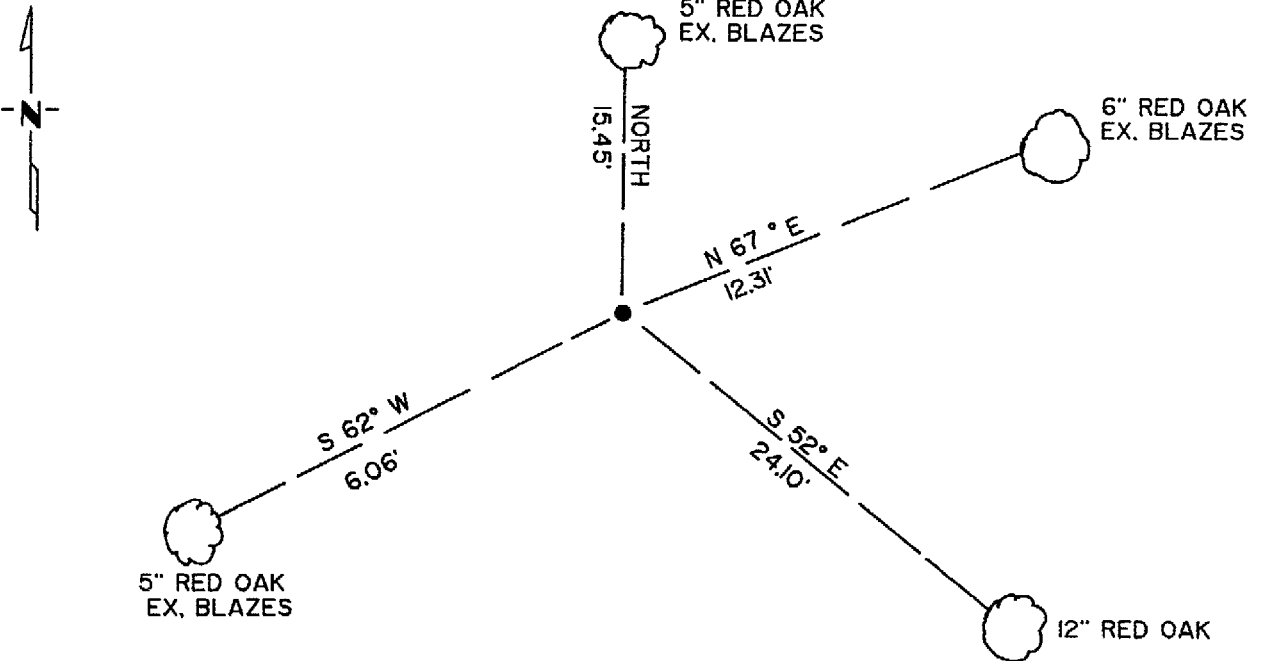
On DEC. 31, 1987 found a 1 1/4" IRON 20" ABOVE GROUND
DATE

left monument as found, lowered monument, removed monument (explain)

On _____ placed a _____
DATE

NO SCALE

SKETCH OF REFERENCE TIES



NOTE: BEARINGS TO TREES ARE MAGNETIC.
DISTANCES ARE TO DUPLEX NAILS IN SIDE OF TREES.
ALL TREES ARE MARKED WITH DOUBLE BLAZES.

Statement of evidence relative to this corner location is on back of page.

302275

I hereby certify that this document and the data contained herein was prepared by me or under my direct supervision.

Arvid S. Linder 1/4/88
SIGNATURE DATE

Registration No. 17008

Land Surveyor
 County Surveyor

OFFICE OF THE COUNTY RECORDER

County of Cass

I hereby certify that this document was filed in the Co. Recorders office at 3:51 P. .M. on the 13 day of January A.D., 19 88

County Recorder Claudia Kayler

By MS, Deputy

DOCUMENT NO. 302275

Statement of Evidence:

T-9

East Quarter Corner Section 29, Township 140 North, Range 29 West, Cass County, Minnesota.

In 1870 the original government survey was done by Orville Smith. A wood post was set to mark the corner.

Two bearing trees witnessing said corner were marked, noted as follows:
5" Norway pine North 64 degrees West, 91 links
5" poplar South 44 degrees East, 90 links.

Around the middle 1940's W. J. Spain, Jr., RLS #2003, used this monument in the subdivision of Government Lot 5, 6, 7, 8 and the Northeast Quarter of the Southeast Quarter for then land owner Foss. Current owner of Government Lot 8, Albert Foss (son), testified also of this fact and described Spain's services, as the Foss's helped Spain through the process of the survey.

Spain had set this corner by single proportionate methods between the Northeast and Southeast corners of said Section 29, based upon Foss's testimony and records.

In 1982 Cass County Survey Technician Terry Freeman finds Spain monument while marking the West line of Section 28.

In 1987 David Landecker, RLS #17008, surveyor with the firm of Landecker & Associates, Inc., found iron pipe monument used by Spain in the Foss survey and accepts this monument as the corner.

Landecker File #87107