

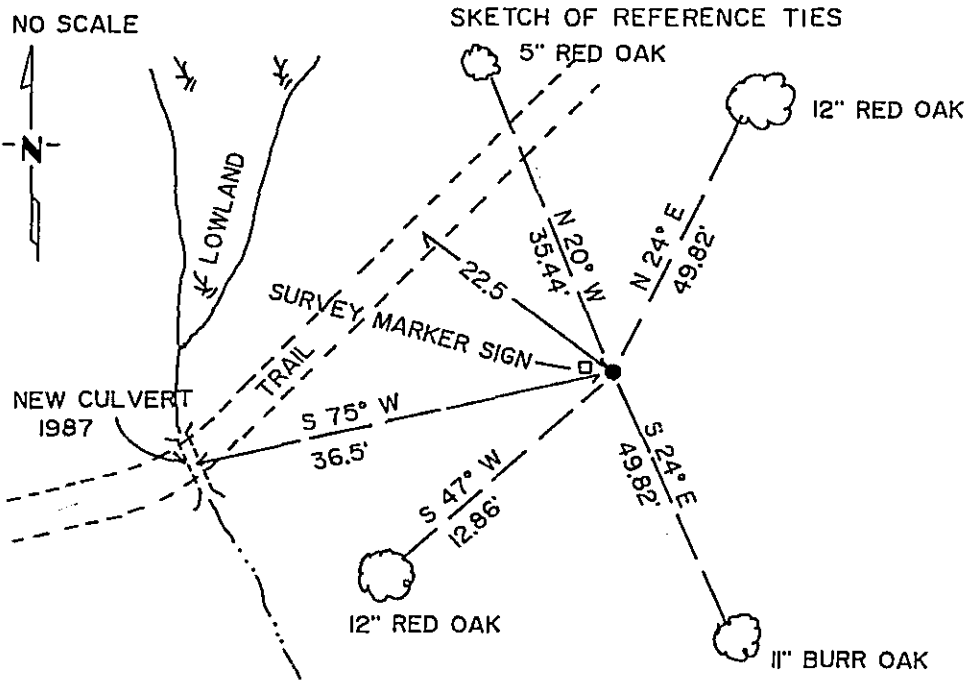
CERTIFICATE OF LOCATION OF GOVERNMENT CORNER

NORTH QUARTER Corner of Section 21, Township 134 N, Range 30 W, 5th P.M.

STATE OF MINNESOTA, County of CASS

At the corner location shown on the sketch:

- On _____ found a _____
DATE
- left monument as found, lowered monument, removed monument (explain)
- On DEC. 16, 1987 placed a 4" CAST IRON COUNTY MONUMENT, 2" ABOVE A BUILT
DATE
DIRT MOUND WITH SOME STONE PLACED AROUND MONUMENT TOP.



NOTE: BEARINGS TO TREES ARE MAGNETIC.
DISTANCES ARE TO DUPLEX NAILS IN SIDE OF TREES.
ALL TREES ARE MARKED WITH DOUBLE BLAZES.

Statement of evidence relative to this corner location is on back of page. 302261

I hereby certify that this document and the data contained herein was prepared by me or under my direct supervision.

David J. Landrum 12/31/87
SIGNATURE DATE

Registration No. 17008
 Land Surveyor
 County Surveyor

OFFICE OF THE COUNTY RECORDER
County of Cass

I hereby certify that this document was filed in the Co. Recorders office at 3:37 P. .M. on the 13 day of January A.D., 1988

County Recorder Claudia Kayler
By MS, Deputy

DOCUMENT NO. 302261

Statement of Evidence:

N-11

North Quarter Corner Section 21, Township 134 North, Range 30 West, Cass County, Minnesota.

In 1868 the original government survey was done by N. Butler. A wood post was set to mark the corner. Two bearing trees witnessing said corner were marked, noted as follows:

10" Red Oak South 10 degrees East, 28 links
10" Birch North 60 degrees East, 30 links

In 1987 David Landecker RLS #17008 surveyor with the firm Landecker & Associates, Inc. searched for and found no evidence of said corner or bearing trees.

A monument was set at this corner as noted on the face of this Certificate in accordance with State and Federal survey standards.

Landecker File Number 87109