

# CERTIFICATE OF LOCATION OF GOVERNMENT CORNER

NORTHEAST Corner of Section 26, Township 141 N, Range 28 W, 5th P.M.

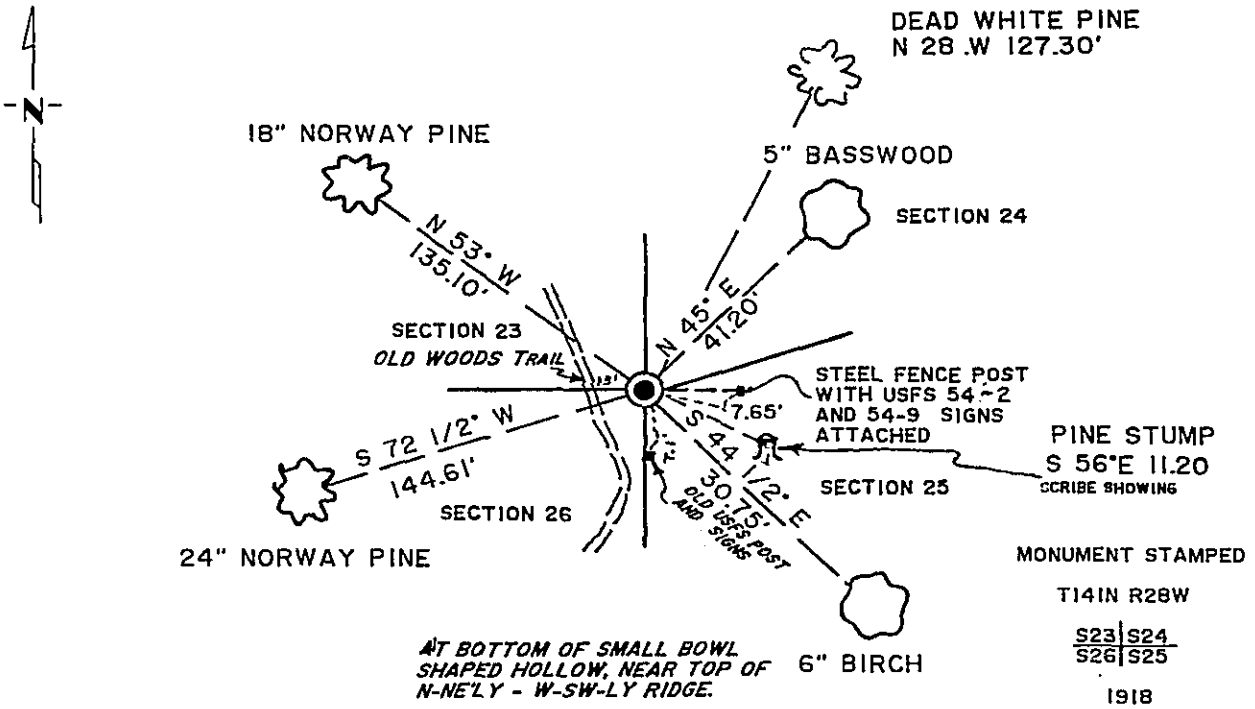
STATE OF MINNESOTA, County of CASS

At the corner location shown on the sketch:

- On 11-5-87 found a BRASS CAPPED MONUMENT  
DATE
- left monument as found,  lowered monument,  removed monument (explain)
- On \_\_\_\_\_ placed a \_\_\_\_\_  
DATE

MAG. DECL: 4 1/2° E

## SKETCH OF REFERENCE TIES



TIES SHOWN ARE TO 16d NAIL IN BASE OF TREE

Statement of evidence relative to this corner location is on back of page. 302192

I hereby certify that this survey, plan or report was prepared by me or under my direct supervision and that I am a duly Registered Land Surveyor under the laws of the State of Minnesota.

Roger A. Musterman  
Date 1/07/88 Registration No. 11946

OFFICE OF THE COUNTY RECORDER  
County of Cass  
I hereby certify that this document was filed in the Co. Recorders office at 3:01 P.M. on the 8 day of January A.D., 1988  
County Recorder Cloudine Kayler  
By m.s., Deputy  
DOCUMENT NO. 302192

**Statement of Evidence:** Northeast Corner of Section 26, Township 141 North,  
Range 28 West of the 5th Principal Meridian

- 1874 P. H. Conger, contract Surveyor for General Land Office,  
Set a post for corner .....  
Maple 6 in S 40 W 19 lks  
Ironwood 5 in N 84 W 24 lks  
Maple 16 in N 45 E 7 lks  
Basswood 6" S 20 E 45 lks.
- 1918 Earl G. Harrington, U.S. Cadastral Engineer, notes show:  
True proportional point for the cor. of secs. 23, 24, 25  
and 26; unable to find any evidence of the original post  
or bearing trees.  
Set an iron post, 3 ft. long, 2 ins. diam., 26 ins. in the  
ground, with brass cap mkd..... From which  
A maple 10 ins. diam., bears N.59 $\frac{1}{2}$ <sup>o</sup>E., 125 lks.  
A white pine, 14 ins. diam., bears S.48 $\frac{1}{2}$ <sup>o</sup>E., 17 lks.  
A birch, 6 ins. diam., bears S. 38<sup>o</sup>W., 55 lks.  
A poplar, 6 ins, diam., bears N. 37<sup>o</sup>W., 72 lks.
- 1979 Roger A. Mustonen, RLS 11946, under contract with Kego  
Township, found the G.L.O. monument in good condition and  
checked tie to White Pine from 1918 survey, and accepts  
monument as the position for the Northeast Corner of Sec. 26.
- 1973 William H. Okerman, RLS 6807, filed Certificate of Location  
of Government corner, recorded as No. 914 on February 5, 1974.  
  
Found the corner which was evidenced by remains of the Gen.  
Land Office survey of 1918, no new monument set as G.L.O.  
monument is in good condition.  
N. Pine 14 inch N48<sup>o</sup>W 135.00 feet scribed S23 BT  
W. Pine 18 inch N35<sup>o</sup>E 127.30 feet scribed S24 BT  
W. Pine 18 inch S48<sup>o</sup>E 11.20 rescribed S25 BT  
W. Pine 18 inch S78<sup>o</sup>W 144.70 feet scribed S26 Bt
- 1987 Roger A. Mustonen, RLS 11946, under contract with USFS, found  
Okermans BTs. However, the W. Pine to the northeast is  
dead and the rescribed W. Pine to the southeast has been cut  
down, but the scribe is still visible. Made new ties to the  
nail in the base of the trees shown, and accepts the G.L.O.  
monument as the position for the Northeast Corner of Sec 26.