

CERTIFICATE OF LOCATION OF GOVERNMENT CORNER

MEANDER ^{#3} Corner of Section 23/24, Township 141 N, Range 28 W, 5th P.M.

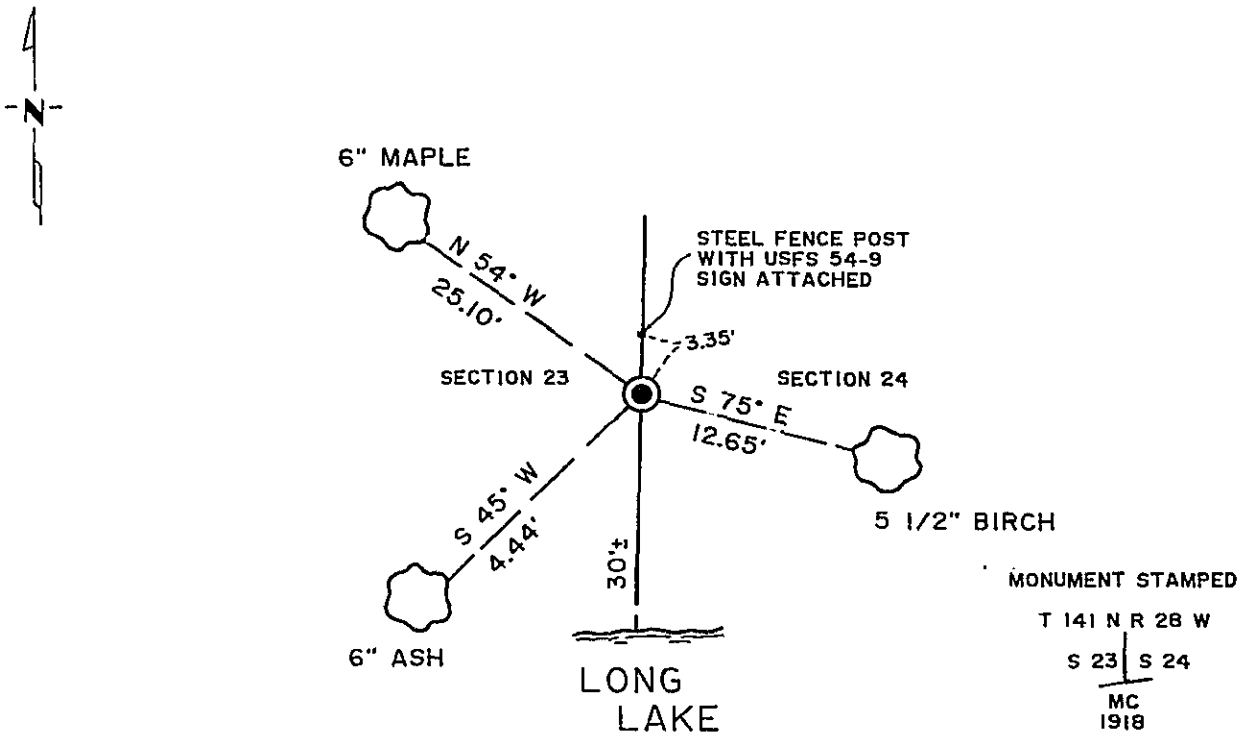
STATE OF MINNESOTA, County of CASS

At the corner location shown on the sketch:

- On 10-20-87 found a BRASS CAPPED MONUMENT
DATE
- left monument as found, lowered monument, removed monument (explain)
- On _____ placed a _____
DATE

MAG. DECL: 4 1/2° E

SKETCH OF REFERENCE TIES



TIES SHOWN ARE TO 16d NAIL IN BASE OF TREE

Statement of evidence relative to this corner location is on back of page. 302189

I hereby certify that this survey, plan or report was prepared by me or under my direct supervision and that I am a duly Registered Land Surveyor under the laws of the State of Minnesota.

Boaz A. M. ...
 Date 1/05/88 Registration No. 11946

OFFICE OF THE COUNTY RECORDER
 County of Cass

I hereby certify that this document was filed in the Co. Recorders office at 2:45 P. M. on the 8 day of January A.D., 19 88
 County Recorder Clouline Kayler
 By ms, Deputy
 DOCUMENT NO. 302189

Statement of Evidence:

Meander Corner #3 on the West Line of Section 24, Township 141 North, Range 28 West of the 5th Principal Meridian, on the north side of Long Lake.

- 1874 P. H. Conger, contract Surveyor for the General Land Office, Set post for M.C.
Jack Pine 4 in N 41 W 25 lks.
Oak 9 in N 27 E 60 lks.
- 1918 Earl G. Harrington, U.S. Cadastral Engineer, notes show:
55.40 Proportional point for the original M.C. bet. secs. 23 and 24. Point falls in lake; unable to find any evidence of the original corner.
55.63 To north shore of Long Lake, bears E. and W., Set an iron post, 3 ft. long, 1 in. diam., 26 ins. in the ground, for a M.C. bet. secs. 23 and 24, with brass cap mkd...
From which

A jack pine, 10 ins. diam., bears N.42°E. 121 lks.
A poplar, 6 ins. diam., bears N.55°W., 107 lks.
- 1986 Gary H. Stevenson, RLS 12684, surveyed and platted Government Lot 6 of Section 24, and prepared a subdivision plat recorded as POINT OF VIEW. On the plat is shown U S G L O Brass Cap Mon Inplace for this corner.
- 1987 Roger A. Mustonen, RLS 11946, under contract with USFS, found the G.L.O. monument 30 feet from the waters edge of Long Lake. Did not find any evidence of the G.L.O. BTs. However, the position checks with the Stevenson plat data. Made new ties to a nail in the base of the trees as shown, and accepts the monument as the Meander Corner on the West Line of Sec. 24, on the north side of Long Lake.