

# CERTIFICATE OF LOCATION OF GOVERNMENT CORNER

MEANDER #9 Corner of Section 13/24, Township 141 N, Range 28 W, 5th P.M.

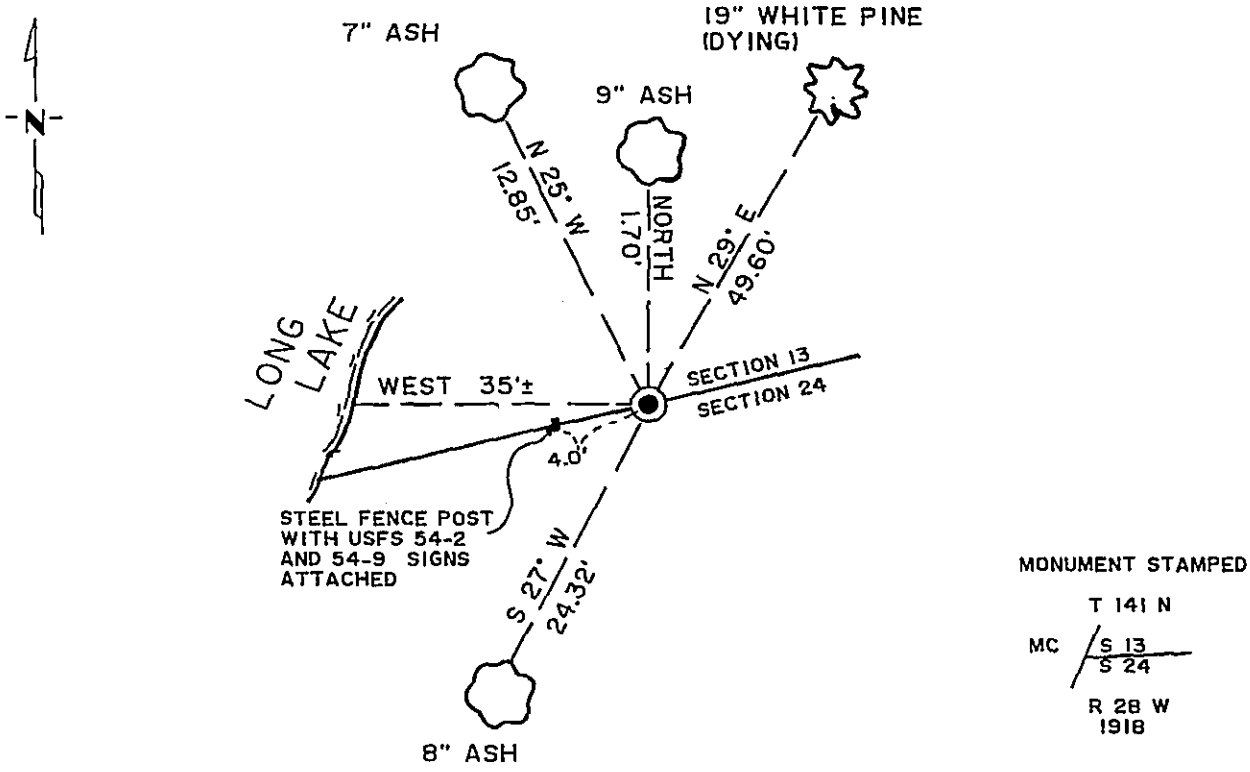
STATE OF MINNESOTA, County of CASS

At the corner location shown on the sketch:

- On 10-20-87 found a BRASS CAPPED MONUMENT  
DATE
- left monument as found,  lowered monument,  removed monument (explain)
- On \_\_\_\_\_ placed a \_\_\_\_\_  
DATE

MAG. DECL: 4 1/2° E

### SKETCH OF REFERENCE TIES



TIES SHOWN ARE TO 16d NAIL IN BASE OF TREE

Statement of evidence relative to this corner location is on back of page. 302187

I hereby certify that this survey, plan or report was prepared by me or under my direct supervision and that I am a duly Registered Land Surveyor under the laws of the State of Minnesota.

Roger Mustonen

Date 1/05/88 Registration No. 11946

### OFFICE OF THE COUNTY RECORDER

County of Cass

I hereby certify that this document was filed in the Co. Recorders office at 2:30 P.M. on the 8 day of January A.D., 1988

County Recorder Claudine Keyler

By ms, Deputy

DOCUMENT NO. 302187

Statement of Evidence:

Meander Corner #9 on the North Line of Section 24, Township 141 North, Range 28 West of the 5th Principal Meridian, and on the east side of Long Lake.

- 1874 P. H. Conger, contract Surveyor for the General Land Office, Set a post for M C..  
Cedar 10 in S 78 E 15 lks.  
Cedar 9 in N 5 E 51 lks.
- 1918 Earl G. Harrington, U.S. Cadastral Engineer, notes show:  
13.19 To shore of Long Lake, bears NE and SW. Set an iron post, 3 ft. long and 1 in diam., 26 ins. in the ground, for a M.C. bet. secs. 13 and 24, with brass cap mkd... From which  
A white pine , 8 ins. diam., bears N.29°E., 74 lks.  
A white pine, 12 ins. diam., bears S.38½°W. 270 lks.  
31.59 Proportional point for the original M.C. bet. secs. 13 and 24. Point falls in lake.
- 1973 William H. Okerman, RLS 6807, filed for record a Certificate of Location of Government Corner, No. 831. Found the Meander Corner of Sections 13-24 which was evidenced by remains of the General Land Office survey of 1918. No new monument set as G.L.O. monument is in good condition.  
Ash 7 inch N25°W 12.85 feet scribed S13 BT  
Ash 7 inch S27°W 24.40 feet scribed S24 BT  
W. Pine 16 inch N29°E 49.60 feet scribed S13 BT.
- 1975 Robert F. Schneider, RLS 5740, surveyed and platted Govt. Lot 6 of Section 13, the land to the north of part of Section 24, and prepared a subdivision plat recorded as MANDER'S WILD ACRES. On the plat is shown U.S.G.L.O. Brass Cap Mon. found at this corner.
- 1987 Roger A. Mustonen, RLS 11946, under contract with USFS, found the G.L.O. monument and Okermans 3 BTs. However, the White Pine is dying. Made new ties to a nail in the base of the trees shown, and accepts the monument as marking the Meander Corner #9 on the North Line of Section 24.