

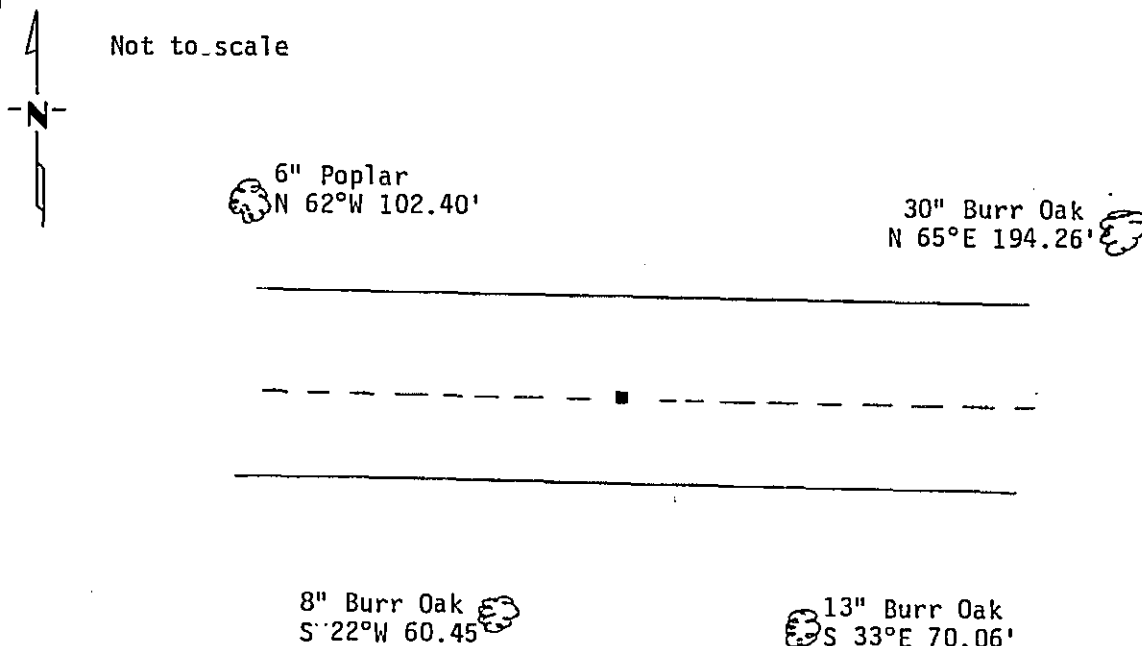
CERTIFICATE OF LOCATION OF GOVERNMENT CORNER

Northeast Corner of Section 10, Township 141 N., Range 28 W., 5th P.M.
 STATE OF MINNESOTA, County of CASS

At the corner location shown on the sketch:

- On 7/30/87 found a 1" iron rod 1' below road surface.
DATE
- left monument as found, lowered monument, removed monument (explain)
- On 7/30/87 placed a 2" sq.x18" telespar monument with stamped aluminum cap in centerline Hwy. 200, flush with surface.
DATE

SKETCH OF REFERENCE TIES



Trees double blazed, scribed, painted red and 54-3 Bearing Tree tag attached.
 Measurement taken to nail in side of tree.

Statement of evidence relative to this corner location is on back of page. 301680

I hereby certify that this document and the data contained herein was prepared by me or under my direct supervision.

Walter P. Tom 11-23-87
SIGNATURE DATE
 Registration No. 11395
 Land Surveyor
 County Surveyor

OFFICE OF THE COUNTY RECORDER
 County of Cass

I hereby certify that this document was filed in the Co. Recorders Office at 10:20 A.M. on the 16 day of Dec. A.D., 19 87
 County Recorder Clondine Kayler
 By ms, Deputy
 DOCUMENT NO. 301680

Statement of Evidence: Northeast Corner Section 10, T.141 N., R.28 W., 5th P.M.

- 1874 US General Land Office survey set a wood post for this corner and marked the following bearing trees: 8" Elm S 4°W 60 lks., 9" Oak N 77°E 80 lks.
- 1915 County Survey Record Book "B", pages 169-177, show a survey by John Curo. He found the old Gov't W. Oak and stake and set a 2½x48" I.M.
- 1917 County Survey Record Book "B", pages 601-603, show a survey by E.B. Horst. He found an iron monument.
- 1918 US General Land Office dependent resurvey found a 3" I.P. and old BT's: Oak stump NE and stump hole southerly. Set a 2"x36" I.P. with marked brass cap and marked the following bearings: 8" Poplar N 49-45 E 339 lks., 16" W. Oak S 61-15 E 334 lks., 8" Poplar S 55-45 W 219 lks., 6" N. Pine N 36 W 315 lks.
- 1923 Minnesota Highway Department R/O/W map shows brass cap in road at PI station 471+27.5
- 1987 Walt Curo, under Forest Service contract, found a 1" iron rod in centerline E-W Hwy. 200, down 1', set 2" sq. x 18" telespar monument with stamped aluminum cap. Marked new BT's as shown on front of this certificate.