

CERTIFICATE OF LOCATION OF GOVERNMENT CORNER

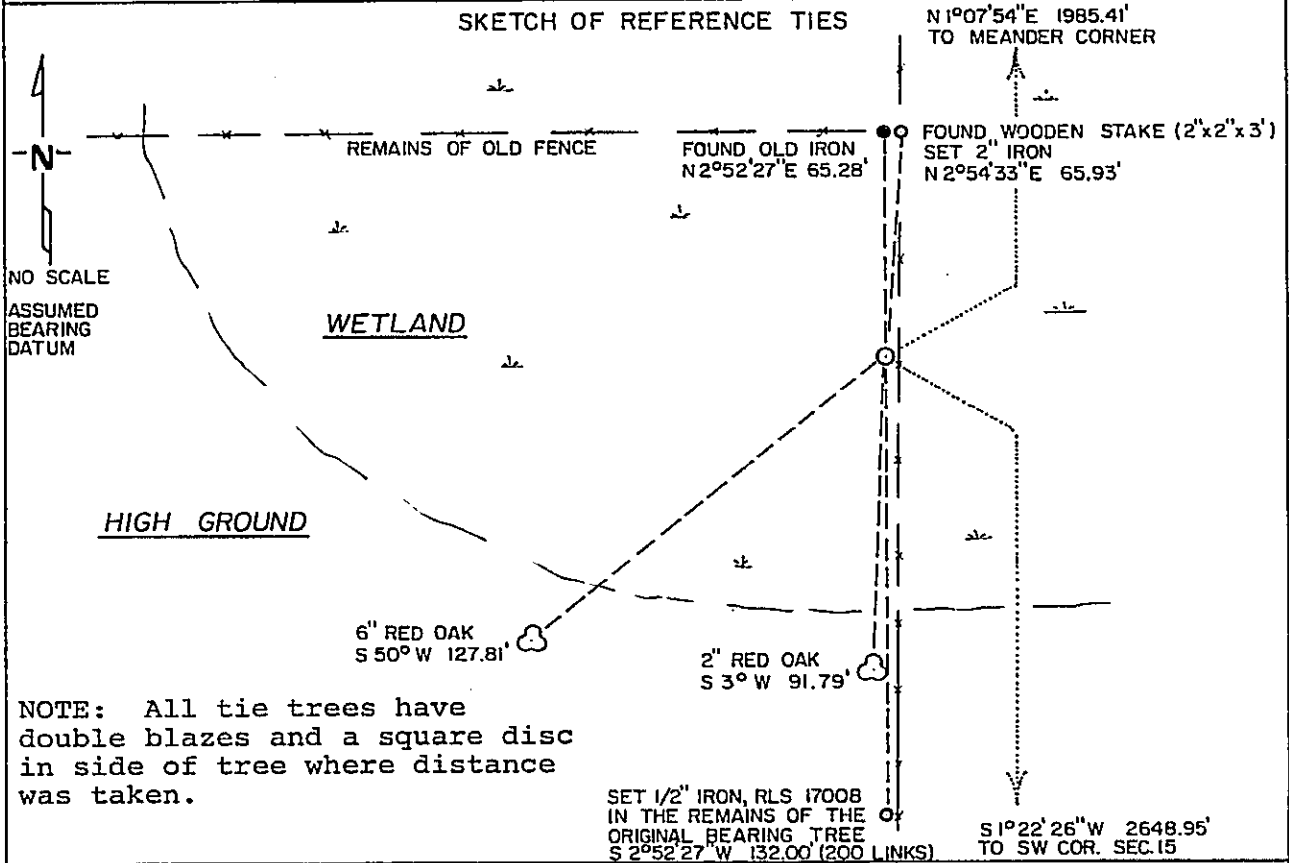
WEST QUARTER Corner of Section 15, Township 139, Range 29, 5th P.M.

STATE OF MINNESOTA, County of CASS

At the corner location shown on the sketch:

- On _____ found a _____
DATE
- left monument as found, lowered monument, removed monument (explain)
- On 3/11/87 placed a 2" SQUARE IRON WITH AN ALUMINUM CAP
DATE

SKETCH OF REFERENCE TIES



NOTE: All tie trees have double blazes and a square disc in side of tree where distance was taken.

Statement of evidence relative to this corner location is on back of page. 298530

I hereby certify that this document and the data contained herein was prepared by me or under my direct supervision.

David A. Lusk 6/24/87
SIGNATURE DATE

Registration No. 17008
 Land Surveyor, Professional Engineer
 County Surveyor, County Engineer

OFFICE OF THE COUNTY RECORDER
 County of Cass

I hereby certify that this document was filed in the RECORDER'S office at 3:00 P.M. on the 29 day of July A.D., 19 87

COUNTY RECORDER Cherline Koyler
 By M.S., Deputy
 DOCUMENT NO. 298530

STATEMENT OF EVIDENCE

West Quarter corner, Section 15, Township 139 North, Range 29 West,
5th P.M., Cass County, Minnesota.

- 1865 - U. S. General Land Office set a wood post for this corner and marked the following bearing trees:
 - 20" Norway pine South 3 degrees West 200 lks (132.00 feet).
- 1908 - J. W. Curo finds norway pine bearing tree however, measures North 300 lks instead of the government measure of 200 lks and establishes an incorrect corner for the West quarter. Book 95, Page 41 (Curo's records).
- 1920 - E. B. Horst surveying Plat of Kinnie Camp uses incorrect Curo corner.
- 1983 - G. Stevenson finds remains of bearing trees (stumps) while surveying said Section 15.
- 1987 - Landecker & Associates, Inc. surveying crews while surveying in Section 15 found the original bearing tree stump and note old Curo iron set at fence intersection at Curo distance from stump (300 lks). Landecker & Associates, Inc. in using the original stump reset the corner government distance 200 lks Northerly and establish the perpetuation of the original government corner for the said quarter corner.