

CERTIFICATE OF LOCATION OF GOVERNMENT CORNER

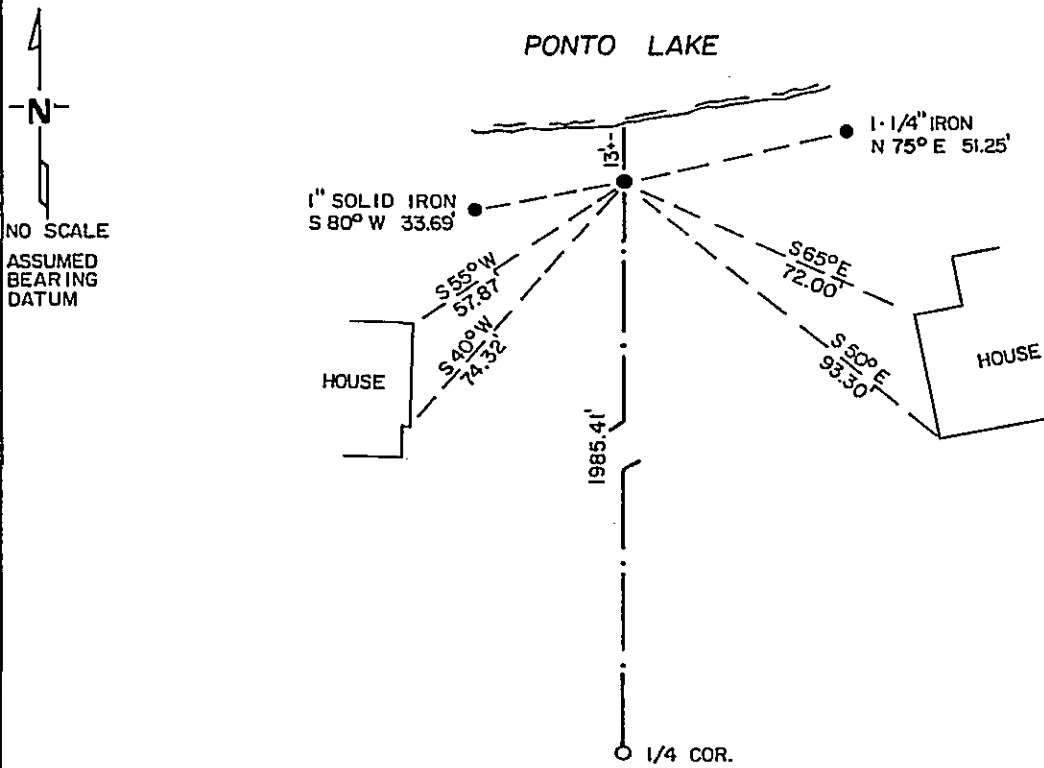
MEANDER Corner of Section 16/15, Township 139, Range 29, 5th P.M.

STATE OF MINNESOTA, County of CASS

At the corner location shown on the sketch:

- On 2/03/87 found a 2" GALVANIZED PIPE WITH A 3" CAP
DATE
- left monument as found, lowered monument, removed monument (explain)
- On _____ placed a _____
DATE

SKETCH OF REFERENCE TIES



Statement of evidence relative to this corner location is on back of page. 298529

I hereby certify that this document and the data contained herein was prepared by me or under my direct supervision.

David J. Lusk 6/24/87
SIGNATURE DATE

Registration No. 17008

- Land Surveyor, Professional Engineer
- County Surveyor, County Engineer

OFFICE OF THE COUNTY RECORDER

County of Cass

I hereby certify that this document was filed in the RECORDER'S office at 3:05 P.M. on the 29 day of July A.D., 19 87

COUNTY RECORDER Claudia Kayler

By MS, Deputy

DOCUMENT NO. 298529

STATEMENT OF EVIDENCE

M.C. #53, Section 15, Township 139 North, Range 29 West, 5th P.M.,
Cass County, Minnesota.

- 1865 - U. S. General Land Office set a wood post for this corner and marked the following bearing trees:
12" black pine South 75 degrees East 59 lks, 10" black pine South 8 degrees West 136 lks.
- 1908 - J. W. Curo uses meander corner Book 95, Page 41 (Curo records).
- 1920 - E. B. Horst surveying Plat of Kinnie Camp finds iron monument for M.C. used by J. W. Curo.
- 1967 - R. F. Schneider uses iron pipe for MC in Minnesota DNR survey.
- 1983 - G. Stevenson uses iron pipe for M.C. as used by previous surveyors.
- 1987 - Landecker & Associates, Inc. surveying crews while surveying in said Section 15 find iron pipe as previously used by other surveyors and accepts the same.