

# CERTIFICATE OF LOCATION OF GOVERNMENT CORNER

Northeast Corner of Section 34, Township 135 N., Range 32 W., 5th P.M.

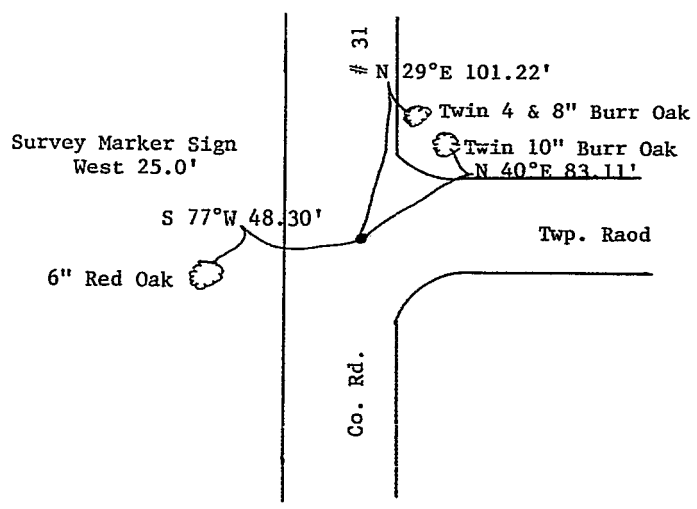
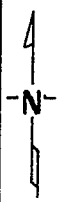
STATE OF MINNESOTA, County of CASS

At the corner location shown on the sketch:

- On 8/28/85 found a 1 1/2" I.P., top bent SE, flush with road, 3.5' east of N-S G, 1' S. of G east  
 left monument as found,  lowered monument,  removed monument (explain)
- On 7/29/86 placed a County cast iron monument down 6"

### SKETCH OF REFERENCE TIES

Not to scale



Distances to nail in side of tree  
Bearings assumed using 5° declination

Statement of evidence relative to this corner location is on back of page. 297506

I hereby certify that this document and the data contained herein was prepared by me or under my direct supervision.

Walter E. Carr 1-23-87  
SIGNATURE DATE

Registration No. 11395  
 Land Surveyor,  Professional Engineer  
 County Surveyor,  County Engineer

OFFICE OF THE REGISTER OF DEEDS  
County of Cass

I hereby certify that this document was filed in the Reg. of Deeds office at 9:55 A. .M. on the 12 day of June A.D., 19 87  
Register of Deeds Clodine Kayler  
By MJ, Deputy  
DOCUMENT NO. 297506

STATEMENT OF EVIDENCE Northeast Corner Section 34, T.135 N., R.32 W., 5th P.M.

- 1866 U.S. General Land Office survey set a wood post for this corner and marked the following bearing trees: 6" W. Oak N  $75\frac{1}{2}^{\circ}$ W 15 lks. 8" Aspen S  $57\frac{1}{2}^{\circ}$ E 12 lks., 8" W.Oak N  $31^{\circ}$ E 41 lks., 7" W.Oak S  $47^{\circ}$ W 44 lks.
- 1985 On August 28, Terry Freeman, Cass County Survey Technician, found a  $1\frac{1}{2}$ " I.P., top bent SE, flush with road, 1' S. of centerline E., 3.5' E. of centerline N-S road.  
Marked the following bearings:  
Twin 10" Burr Oak N  $40^{\circ}$ E 83.11'  
6" Red Oak s  $77^{\circ}$ W 48.30'
- 1986 On July 29, Terry Freeman and Dan Gordon, pulled the found iron and replaced with a County cast iron monument, down 6". Added another bearing:  
Twin 4 & 8" Burr Oak N  $29^{\circ}$ E 101.22'

Although there is not a record of the I.P. being set, the Cass County Surveyors Office feels that the found iron is a perpetuation of the original corner and accepts it as such.