

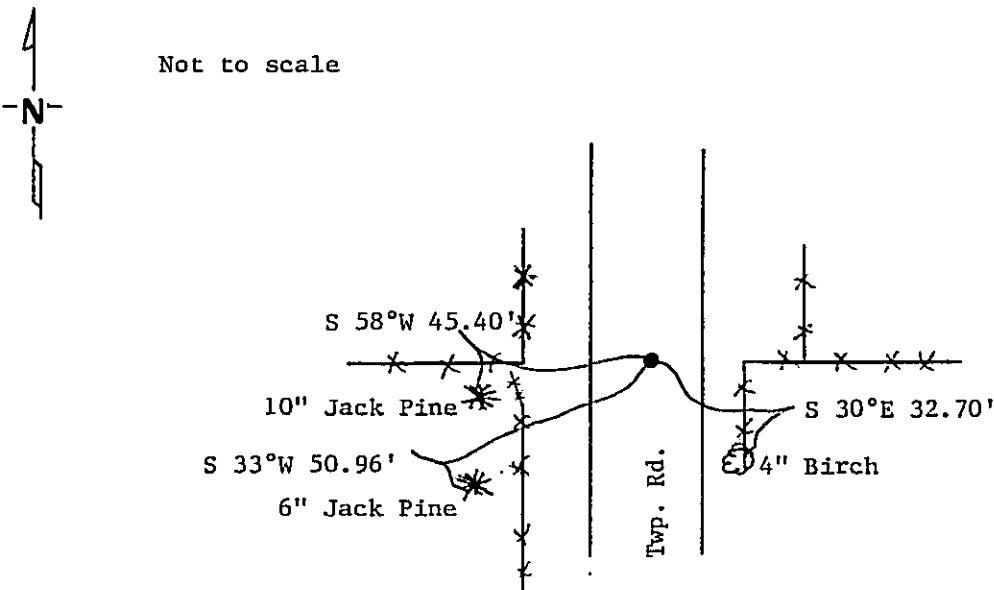
CERTIFICATE OF LOCATION OF GOVERNMENT CORNER

East Quarter _____ Corner of Section 26, Township 135 N., Range 32 W., 5th P.M.
 STATE OF MINNESOTA, County of CASS

At the corner location shown on the sketch:

- On _____ found a _____
DATE
- left monument as found, lowered monument, removed monument (explain)
- On 8/14/86 placed a cast iron monument down 8" in centerline of N-S rd.
DATE
in line with fences E. & W.

SKETCH OF REFERENCE TIES



Measurements are to nail in side of tree.
 Bearings are assumed using 5° declination.

Statement of evidence relative to this corner location is on back of page. 297504

I hereby certify that this document and the data contained herein was prepared by me or under my direct supervision.

Walter E. Lewis 1-22-87
SIGNATURE DATE

Registration No. 11395

- Land Surveyor, Professional Engineer
 County Surveyor, County Engineer

OFFICE OF THE REGISTER OF DEEDS
 County of Cass

I hereby certify that this document was filed in the Reg. of Deeds office at 9:45 A. .M. on the 12 day of June A.D., 1987

Register of Deeds Clarence Koyh

By MJ, Deputy

DOCUMENT NO. 297504

STATEMENT OF EVIDENCE East Quarter Corner Section 26, T.135 N., R.32 W., 5th P.M.

- 1866 U.S. General Land Office survey set a wood post for this corner and marked the following bearing trees: 6" Bl. Pine S $68\frac{1}{2}^{\circ}$ E 49 lks., 6" Bl. Pine N 78° E 56 lks.
- 1985 On Sept. 16, Terry Freeman, Cass County Survey Technician and Ken Meyer, backhoe operator dug in area of N-S rd and fences E & W. Dug 10' N-S x 8' E-W x 3' deep. 6" sand top, 1.5' fill and dug 1' into gray silty-loam- found nothing.
- 1986 On August 14, Terry Freeman, Jim Cripps and Norman Maunu set a cast iron monument in centerline of N-S road and in line with fences E & W.