

CERTIFICATE OF LOCATION OF GOVERNMENT CORNER

North Quarter Corner of Section 1, Township 135 N, Range 32 W, 5th P.M.

STATE OF MINNESOTA, County of CASS

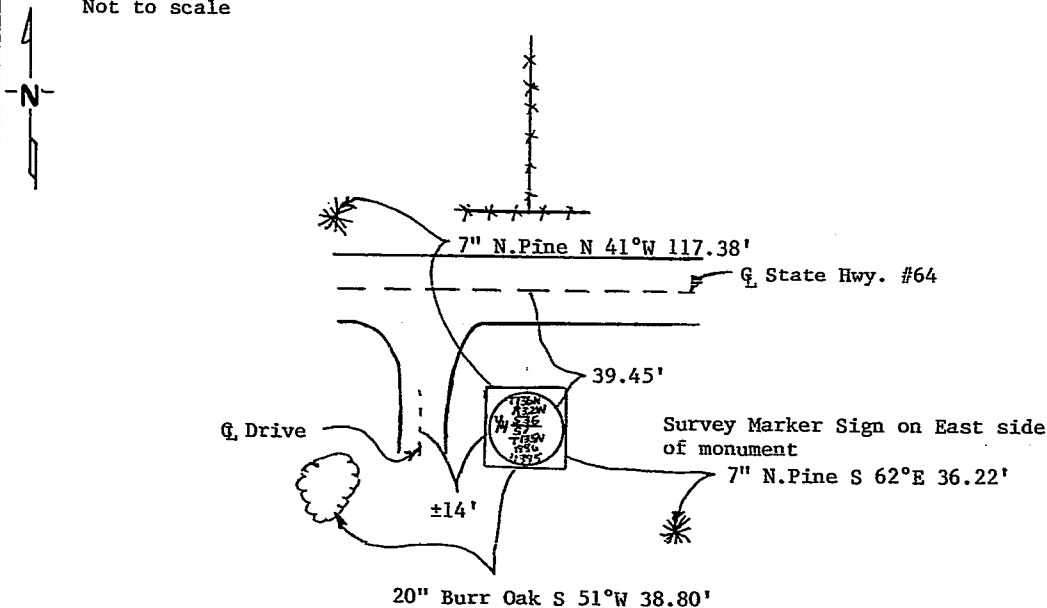
At the corner location shown on the sketch:

- On _____ found a _____
DATE
- left monument as found, lowered monument, removed monument (Explain)

- On 8/26/86 placed a 2"x36" telespar monument with stamped aluminum cap,
DATE
up 6", 39.45' S. of c of State Hwy 64 and ±14' E. of c driveway

SKETCH OF REFERENCE TIES

Not to scale



Measurements are to nail in side of tree.
 Bearings assumed using 5° declination.

Statement of evidence relative to this corner location is on back of page. 297165

I hereby certify that this document and the data contained herein was prepared by me or under my direct supervision.

Walter E. Am 1-22-87
SIGNATURE DATE

Registration No. 11395
 Land Surveyor, Professional Engineer
 County Surveyor, County Engineer

OFFICE OF THE REGISTER OF DEEDS
 County of Cass

I hereby certify that this document was filed in the Reg. of Deeds office at 9:30 A.M. on the 1 day of June A.D., 1987

Register of Deeds Clodine Kayler
 By ms, Deputy

DOCUMENT NO. 297165

STATEMENT OF EVIDENCE North Quarter Corner Section 1, T.135 N., R.32 W., 5th P.M.

- 1858 U.S. General Land Office survey set a wood post for this corner and marked the following bearing trees: 9" Lynn N 24°E 46 lks., 14" Lynn N 13°W 42 lks.
- 1957 Minnesota Dept. of Transportation assumed the corner at intersection of fence and road. Assumed corner is 39.45' South of the new centerline.
- 1986 On August 26, Terry Freeman and Jim Cripps set a 2"x36" telespar monument with stamped aluminum cap, from State Hwy. Dept. information. Monument is 39.45' South of centerline of Hwy 64 and ±14' East of centerline of driveway.