

CERTIFICATE OF LOCATION OF GOVERNMENT CORNER

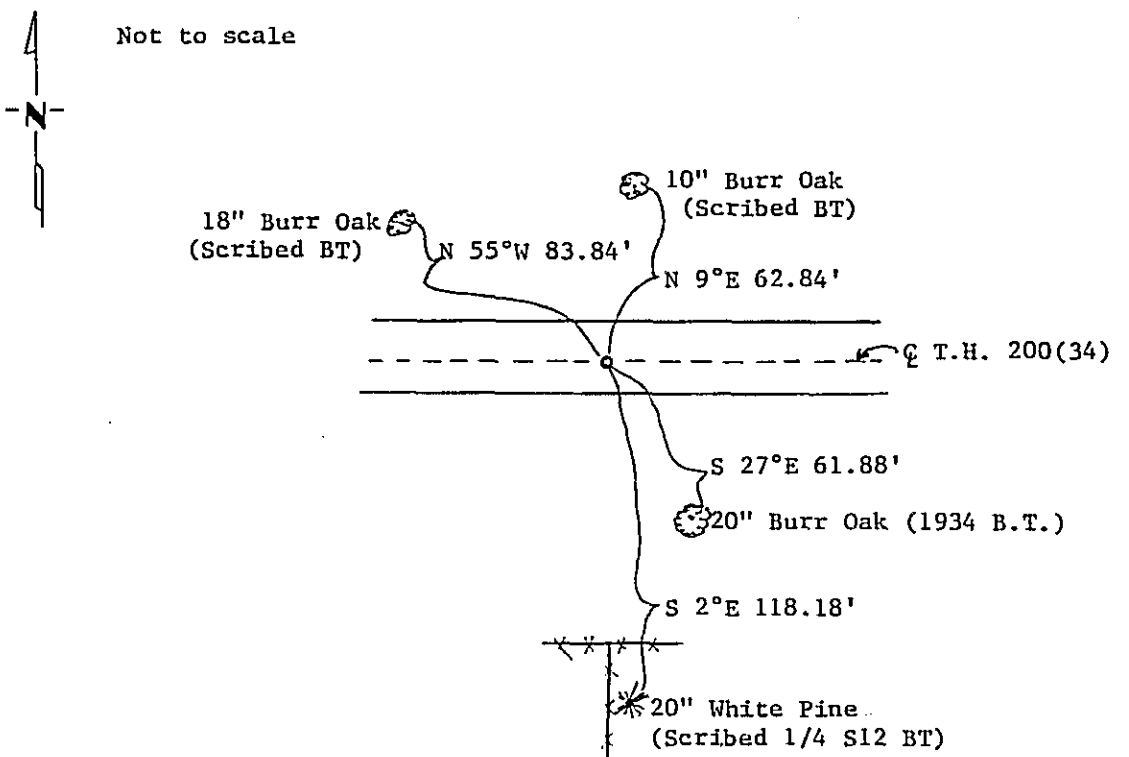
North Quarter Corner of Section 12, Township 141 N., Range 28 W., 5th P.M.

STATE OF MINNESOTA, County of CASS

At the corner location shown on the sketch:

- On 4/8/87 found a 3/4"x12" iron pin down 1' in centerline of T.H. 200(34)
DATE
- left monument as found,
 lowered monument,
 removed monument (explain)
- On 4/8/87 placed the 1918 GLO Brass cap monument down 0.1'
DATE

SKETCH OF REFERENCE TIES



Bearings assumed using 5° declination.
 Measurements are to nail in side of tree. Trees have BEARING TREE tags attached.

Statement of evidence relative to this corner location is on back of page. 296082

I hereby certify that this document and the data contained herein was prepared by me or under my direct supervision.

Walter E. Gross 4/9/87
SIGNATURE DATE

Registration No. 11395
 Land Surveyor, Professional Engineer
 County Surveyor, County Engineer

OFFICE OF THE COUNTY RECORDER
 County of Cass

I hereby certify that this document was filed in the Co. Recorders office at 1:15 P .M. on the 10 day of April A.D., 19 87

County Recorder Clondine Kaylor
 By MS, Deputy

DOCUMENT NO. 296082

Statement of Evidence: North Quarter Corner Section 12, T.141 N., R.28 W., 5th P.M.

- 1874 U.S. General Land Office survey set a wood post for this corner and marked the following bearing trees: 9" Elm N 35°W 24 lks., 13" Ash S 25°E 13 lks.
- 1918 U.S. General Land Office dependent resurvey found no original evidence and set a 1x36" I.P. with marked brass cap at the proportional position and marked new bearings: 8" Elm S 36°W 40 lks., 10" W.Pine N 35½°W 86 lks.
- 1923 State Hwy Dept. R/O/W map (15 M. E. of Walker to 12 M. W. of Remer) shows a brass cap monument. (T.H. #34)
- 1927 State Hwy Dept. R/O/W map (12 M. W. of Remer to Remer) shows brass cap monument. (T.H. #34)
- 1934 State Hwy Dept. R/O/W map (10 M. E. of Jct T.H. 371 to 1.5 M. E. of Jct. T.H. 84) (T.H. #34) Map shows 1" iron pin at ¼ Corner and the following ties: 15" W.Oak SE 61.55', 10" Basswood NE 53.8' and 20" Red Oak NW 68.9'.
- 1971 U.S. Forest Service found the GLO Brass cap monument and filed a CERTIFICATE OF LOCATION OF GOVERNMENT CORNER.
- 1977 Walter Curo platted VAL-MAR ACRES and found brass cap monument to be approximately 100 feet south of true position.
- 1987 County Surveyor Walt Curo, Survey Technician Terry Freeman and USFS personnel Curt Krause and Jeff Allison found some 1934 Hwy Dept. evidence consisting of the iron pin, 15" W.Oak (now 20") SE and a stump hole of Red Oak BT NW. Based on the 1934 evidence and the 1977 survey tying corners to the south, the GLO brass cap was pulled and set in place of the found iron pin in the centerline of highway. New ties were taken as shown on front of this certificate.